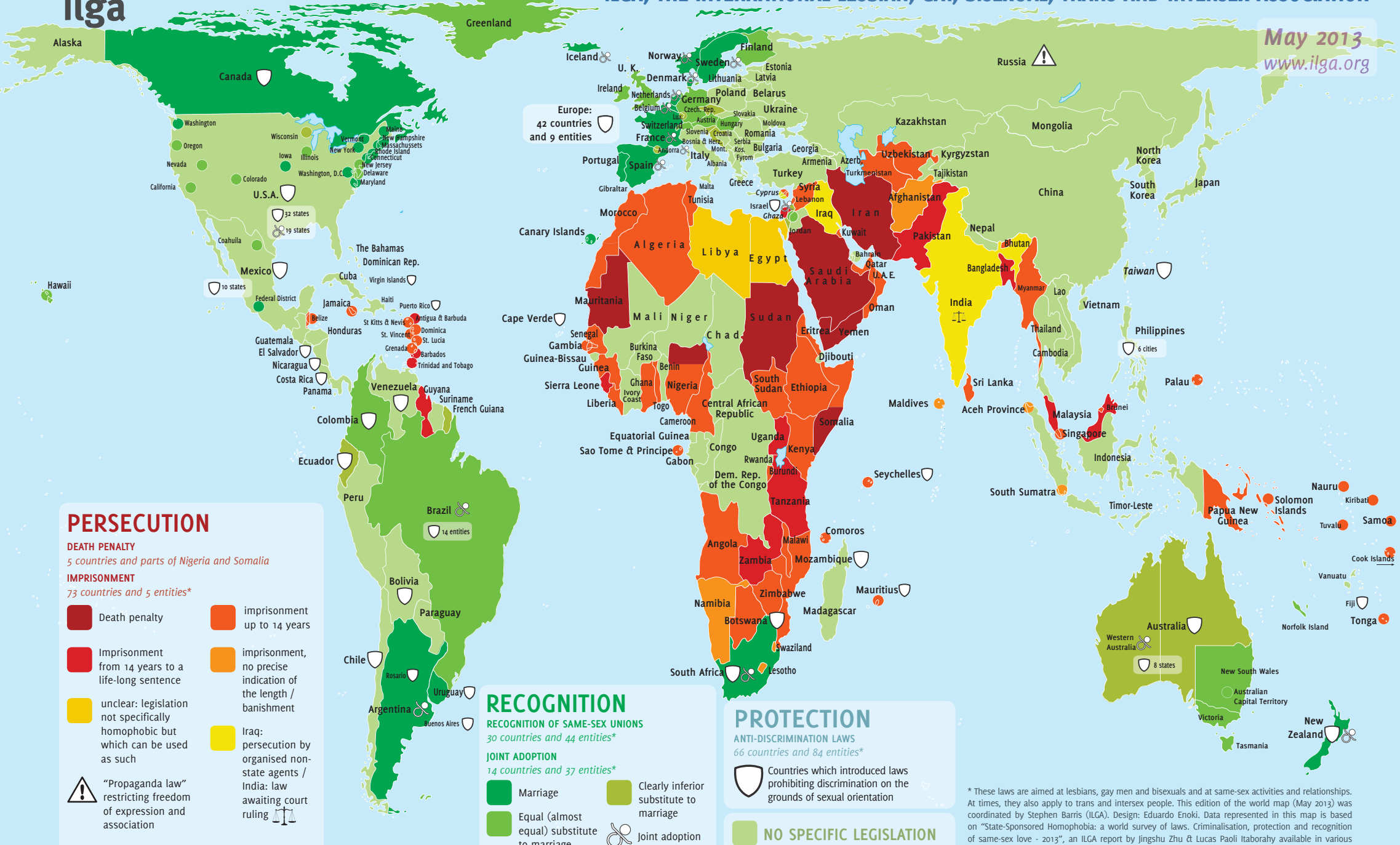




LESBIAN AND GAY RIGHTS IN THE WORLD

ILGA, THE INTERNATIONAL LESBIAN, GAY, BISEXUAL, TRANS AND INTERSEX ASSOCIATION

May 2013
www.ilga.org



PERSECUTION

DEATH PENALTY
5 countries and parts of Nigeria and Somalia
IMPRISONMENT
73 countries and 5 entities*

- Death penalty
- Imprisonment up to 14 years
- Imprisonment from 14 years to a life-long sentence
- imprisonment, no precise indication of the length / banishment
- unclear: legislation not specifically homophobic but which can be used as such
- Iraq: persecution by organised non-state agents / India: law awaiting court ruling
- "Propaganda law" restricting freedom of expression and association

RECOGNITION

RECOGNITION OF SAME-SEX UNIONS
30 countries and 44 entities*
JOINT ADOPTION
14 countries and 37 entities*

- Marriage
- Clearly inferior substitute to marriage
- Equal (almost equal) substitute to marriage
- Joint adoption

PROTECTION

ANTI-DISCRIMINATION LAWS
66 countries and 84 entities*

Countries which introduced laws prohibiting discrimination on the grounds of sexual orientation

NO SPECIFIC LEGISLATION

* These laws are aimed at lesbians, gay men and bisexuals and at same-sex activities and relationships. At times, they also apply to trans and intersex people. This edition of the world map (May 2013) was coordinated by Stephen Barris (ILGA). Design: Eduardo Enoki. Data represented in this map is based on "State-Sponsored Homophobia: a world survey of laws. Criminalisation, protection and recognition of same-sex love - 2013", an ILGA report by Jingshu Zhu & Lucas Paoli Itaborahy available in various languages on www.ilga.org. ILGA thanks groups which contributed to the annual update.



ILGA is a world-wide network of local and national organizations dedicated to achieving equal rights for Lesbian, Gay, Bisexual, Trans, and Intersex (LGBTI) people everywhere.

Founded in 1978, ILGA enjoys consultative status at the United Nations where it speaks and lobbies on behalf of 1005 member organisations.

For more information on ILGA, write to information@ilga.org or visit www.ilga.org. To become a member and/or to support our work by making a donation, write to membership@ilga.org