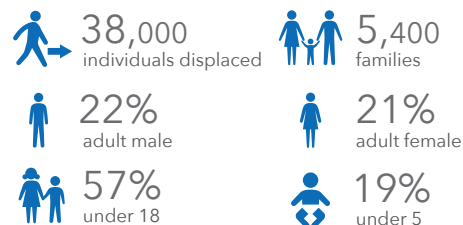


# AFGHANISTAN: Conflict Induced Displacements in 2017 - Snapshot (as of 19 March 2017)

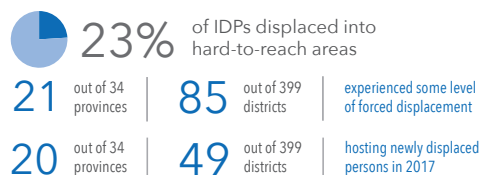


From 1 January to 17 March 2017, 38,000 individuals fled their homes due to conflict in Afghanistan, with 21 of 34 provinces recording forced displacement. Constrained humanitarian access hinders assessments, preventing verification of the full extent of displacement and undermining provision of assistance and services. Inadequate shelter, food insecurity, insufficient access to sanitation and health facilities, as well as a lack of protection, often result in precarious living conditions that jeopardises the well-being and dignity of displaced families.

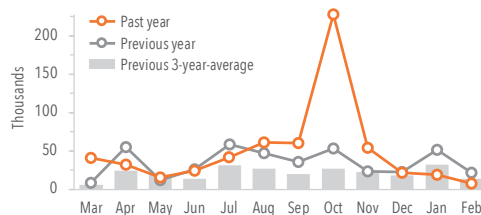
## KEY FIGURES



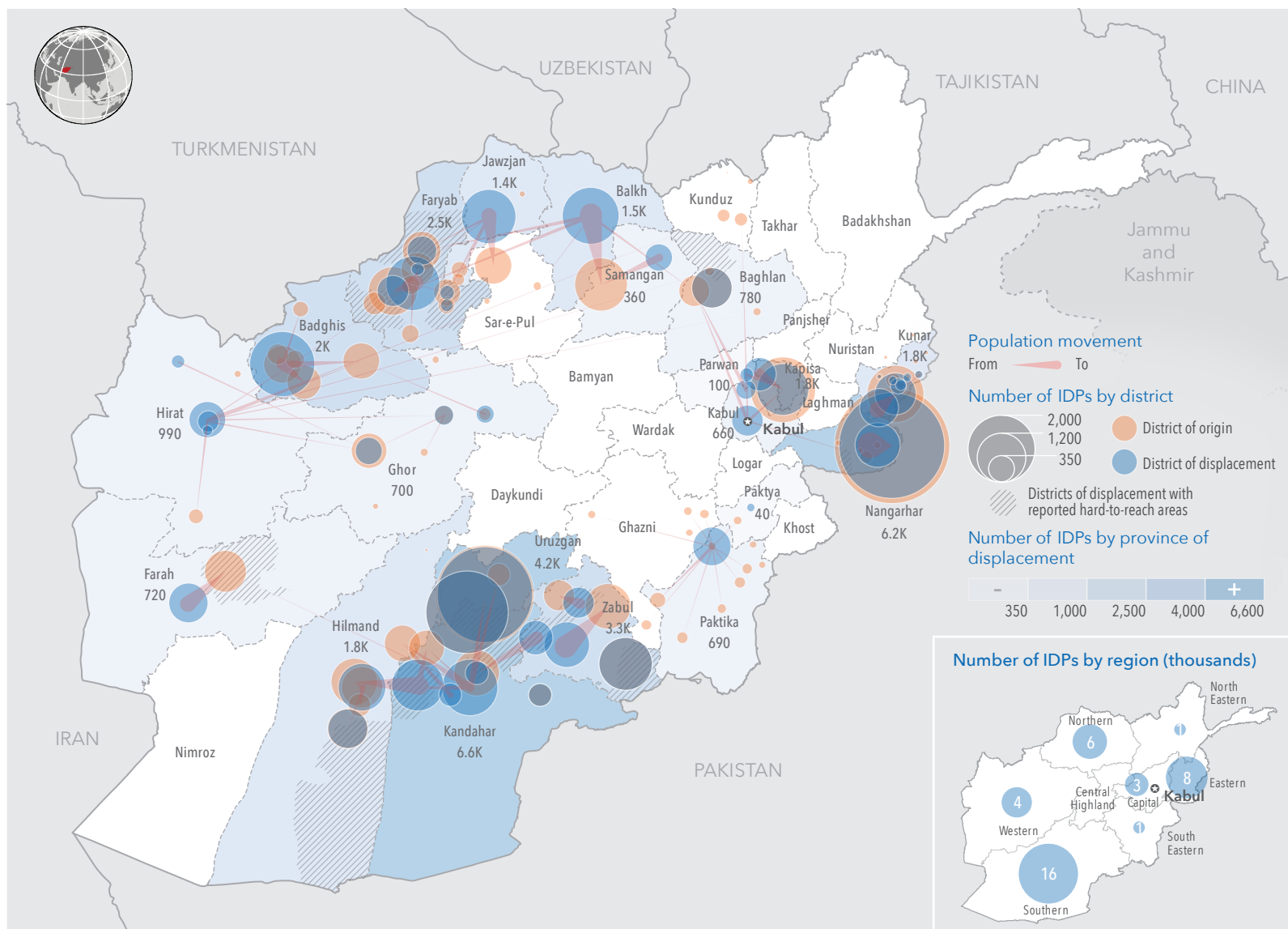
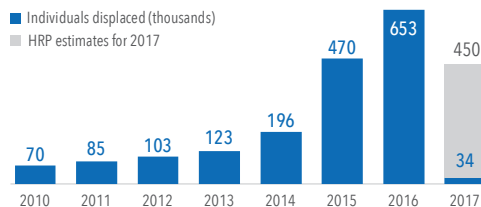
## LOCATION AND ACCESS



## MONTHLY TRENDS (PAST THREE YEARS)



## YEARLY TRENDS (2010-2017)



**Data sources:** Newly displaced population due to conflict from 1 January to 17 March 2017, compiled by OCHA sub-offices based on inter-agency assessment results (as of 19 Mar 2017). Assessments are ongoing in the field and these numbers are expected to change as new information becomes available. IDP data for 2015 and earlier from IDP Task Force / UNHCR Population Movement Tracking System (PMT). **Creation date:** 19 Mar 2017 **Feedback:** ocha-afg@un.org **Website:** <http://www.unocha.org/afghanistan> <http://afg.humanitarianresponse.info>  
**Disclaimers:** The designations employed and the presentation of material on this map do not imply the expression of any opinion whatsoever on the part of the Secretariat of the United Nations concerning the legal status of any country, territory, city or area or of its authorities, or concerning the delimitation of its frontiers or boundaries.