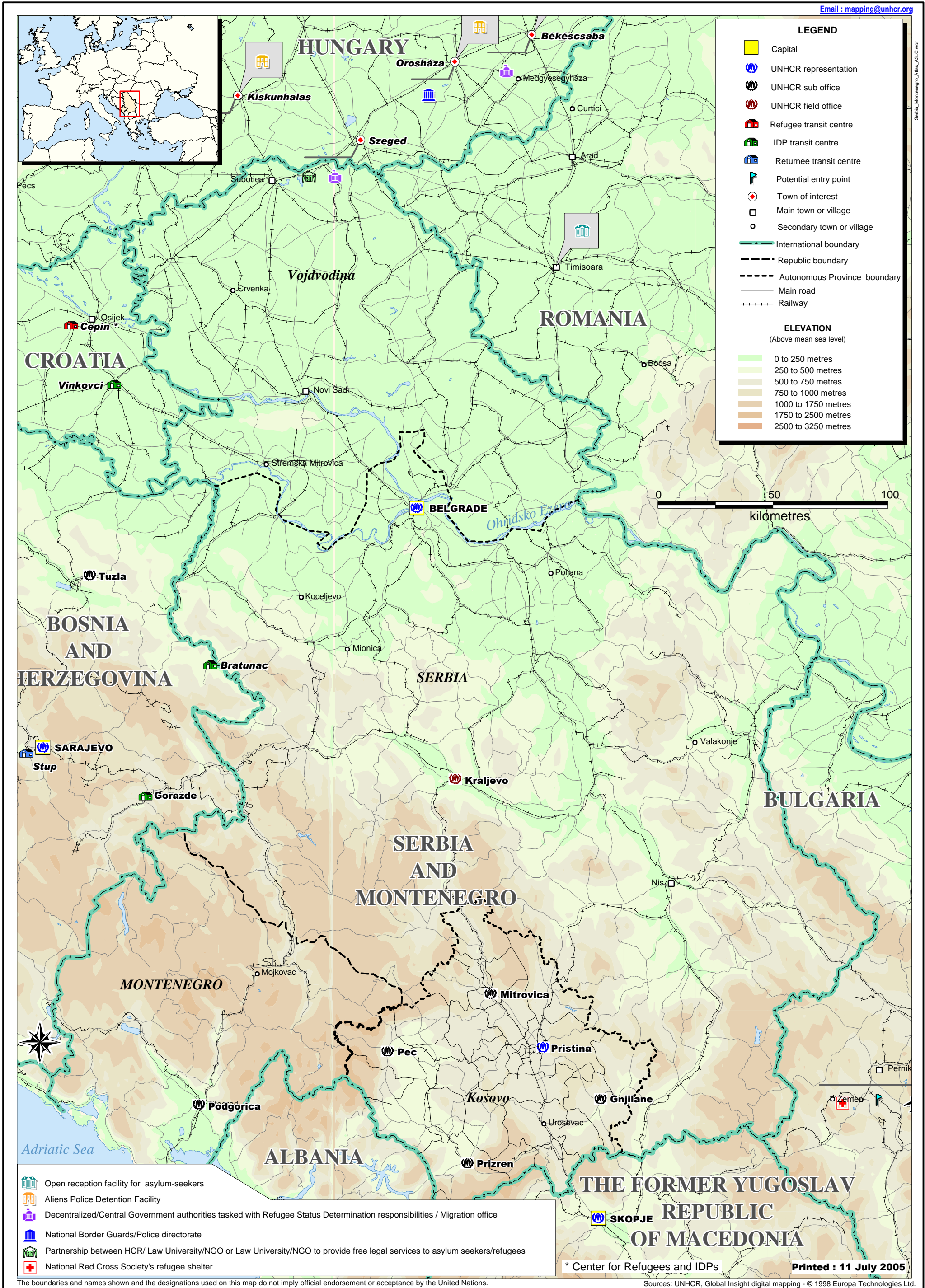


Email : mapping@unhcr.org



LEGEND

- Capital
- UNHCR representation
- UNHCR sub office
- UNHCR field office
- Refugee transit centre
- IDP transit centre
- Returnee transit centre
- Potential entry point
- Town of interest
- Main town or village
- Secondary town or village
- International boundary
- Republic boundary
- Autonomous Province boundary
- Main road
- Railway

ELEVATION
(Above mean sea level)

- 0 to 250 metres
- 250 to 500 metres
- 500 to 750 metres
- 750 to 1000 metres
- 1000 to 1750 metres
- 1750 to 2500 metres
- 2500 to 3250 metres

- Open reception facility for asylum-seekers
- Aliens Police Detention Facility
- Decentralized/Central Government authorities tasked with Refugee Status Determination responsibilities / Migration office
- National Border Guards/Police directorate
- Partnership between HCR/ Law University/NGO or Law University/NGO to provide free legal services to asylum seekers/refugees
- National Red Cross Society's refugee shelter

* Center for Refugees and IDPs Printed : 11 July 2005