

**REBUILDING THE LIVES OF THOSE HARD TO REACH, A MUST:** Grandmother, Aisha, with her daughters and grandchildren has been living in an unfinished building in Qudsaya, a hard-to-reach and formerly besieged town in Rural Damascus. They are among the 30,000 people in this town needing urgent shelter support.



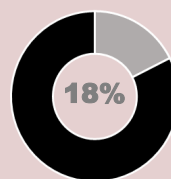
**Shelter Sector**  
Syria Hub  
Shelter@unhcr.org  
Coordinating Humanitarian Shelter

© UNHCR Syria / Q. Alazroni

## MAJOR HIGHLIGHTS

- To better understand the situation of the population in need on the ground and strengthen the sector's humanitarian response plan for 2017, the sector, co-led by UNCHR and MoLA, organized a Governorates Needs Identification Workshop on 17th-18th of October 2016. The activity also served as an opportunity to enhance communication and collaboration amongst all shelter actors on the national and sub-national level. Overall, Governorate (local authorities) representatives expressed the need for more durable shelter options along with emergency shelter support. This has validated the planned response of the sector for 2017, which focuses more on a resilient-oriented type of assistance. 16 shelter partners participated in the workshop, as well as representatives from 10 Governorates in Syria.
- In line with its current focus on a resilient-oriented approach, the sector gathered shelter partners on 12th of October 2016 in order to highlight lessons learned in implementing Owner-Oriented Shelter Projects. The outcome will serve to improve the set of guidelines that has been developed to harmonize the response. In addition to Homs city, where Owner-Oriented projects were launched and still represent the main focus, Dara'a and Rural Damascus have been identified as potential geographic areas to implement such an activity.
- The sector has also started designing a winterization shelter kit, to be tested this winter and included in the 2017 shelter response.
- Collective shelter rehabilitations and upgrades have been ongoing in both public and private buildings. In September, UNHCR in partnership with Première Urgence Internationale (PUI) successfully completed four (4) shelters in Tartous and one (1) shelter in Lattakia. Al-Karnak relocation project is still in the preparation phase with no major developments.
- The sector contributed to the finalization of the 2017 Humanitarian Needs Overview.

## KEY DIGITS



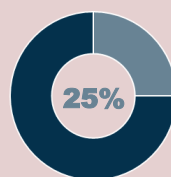
**2.4 million**  
people in need (PiN) of shelter

Estimate number of people in Syria in need of shelter (18% of the estimated 13.5 million total people in need of humanitarian support in 2016)



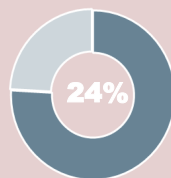
**1.2 million**  
PiN targeted entire Syria in 2016

Estimate number of targeted people in Syria in need of shelter (50% of the estimated 2.4 million people in need of shelter in 2016)



**300,000**  
PiN targeted by Syria Hub in 2016

Estimated number of targeted people in need of shelter by Syria Hub (25% of the estimated 1.2 million targeted people in need in Syria in 2016)



**72,000**  
People assisted

Total beneficiaries assisted by shelter projects as of October 2016 (24% of 300,000 targeted people in need by Syria Hub)



**147**  
shelter projects implemented

Total number of shelter projects implemented from Jan– Oct 2016



**20**  
shelter sector partners

Number of active shelter sector partners with operational presence



## GAPS AND CHALLENGES

- **Continued influx of displaced population** has increased the number of IDPs seeking shelters and overstretches the capacity of authorities and host communities to provide adequate shelter solutions (i.e. As-Sweida);
- **Limited or no access to population in need in hard-to-reach and besieged areas and lack of long-term access** is an impediment for partners to provide proper shelter support;
- **Difficulties in gaining approval for private properties and from unfinished building owners** affect the ability of the sector to better address the population in need (i.e. Baniyas and Jableh in Tartous governorate);
- **Limited availability of potential shelter sites and structures** for implementation of transitional solutions, is a real challenge especially when in need of temporary solution for newly displaced people;
- **Lack of income – generating opportunities** ensuring the necessary financial means continues to hamper the access to basic shelter materials among the most vulnerable population;
- **Persistent shortage of electricity, water and sanitation** compels the sector to coordinate better with other sectors to address these, in order to better alleviate the suffering of the population in need;
- **Weak community-based shelter management skills** and lack of community participation reduce the sense of ownership among the population of concern and therefore affects the implementation quality of shelter projects;
- **Rigorous bureaucratic and approval procedures** affect the timeliness and effectiveness of shelter assistance;
- **Limited operational capacity** hampers the sector to extend the scope and impact of shelter support interventions;
- **Weak coordination with the field** due to lack of dedicated coordinators affects the complementarity of shelter projects among international and local humanitarian agencies;
- **Absence of age and gender disaggregated information** of population in need impedes the sector to accommodate and target specific needs;
- **Limited and irregular monitoring and evaluation** due to insecurity and sensitivities compromise the ability of the sector to assess the efficiency of shelter response and better inform future planning;
- **Absence of clear and effective feedback mechanism** for the population in need, due to information gathering and needs assessment sensitivities, hinders the sector to better determine the adequacy of its effort;
- **Limited stocks and lack of warehouse capacity** affect the extent of shelter contingency planning.

**CRISIS BACKGROUND:** *The crisis in Syrian Arab Republic that started in March 2011 has transformed into a multi-sided armed conflict that displaced around 6.5 million people and forced around 4.2 million people out of the country to seek asylum. According to the Humanitarian Needs Overview in 2016, around 13.5 million people are in need of humanitarian support of which around 5.3 million people are desperate to receive emergency shelter, essential household items and other multi-sectoral assistance as they continue to struggle in insecure areas. The degree of resilience and positive coping mechanism of the affected population have reduced due to the protracted nature of the conflict. Purchasing power and the ability to provide for their basic household needs have decreased due to economic recession that left thousands of Syrian people unemployed and the prospect of accessing essential household items has also declined due to closure of essential service providers.*



## PARTNER IN FOCUS



Première Urgence Internationale (PUI) or First International Emergency is an international non-profit, apolitical and secular organization. Globally, PUI aims to provide comprehensive response to address the basic needs of population affected by humanitarian crises.

PUI is one of the first international non-government organizations registered in Syria in 2008, conducting education projects for Iraqi refugees. Since then, PUI has been working closely with the Syrian Arab Red Crescent (SARC), the Ministry of Education (MoE), the Ministry of Local Administration (MoLA), international NGOs, and United Nations agencies in government-controlled areas.

PUI has been recognized in Syria with expertise on post-emergency and early recovery. With the outbursts of the crisis in 2011, the scale and diversity of needs led PUI to continue emergency distribution (i.e. hygiene kits, winter kits, kitchen sets, stoves, drinking water), help improve housing conditions of internally displaced persons (i.e. rehabilitation of individual and collective shelters), rehabilitate and revive the activities of a primary health centers, and support the education of displaced students (i.e. additional classes construction, teacher training, and vocational training).

PUI team is operating in Syria with 102 staff. To know more about PUI, visit their website at [www.premiere-urgence.org](http://www.premiere-urgence.org)

### Shelter Sector Coordination Team

Nadia Carlevaro, Shelter Sector Coordinator ([carlevar@unhcr.org](mailto:carlevar@unhcr.org))

Bareaa Alkafre, Asst. Sector Officer ([alkafre@unhcr.org](mailto:alkafre@unhcr.org))

Muhammad Shazad, IM Officer ([shahzadm@unhcr.org](mailto:shahzadm@unhcr.org))

Corazon C. Lagamayo, IM Officer ([lagamayo@unhcr.org](mailto:lagamayo@unhcr.org))

Maha Shaaban, IM Associate ([shabanm@unhcr.org](mailto:shabanm@unhcr.org))

# PROFILE SHEET

AS OF  
OCTOBER  
2016



**Shelter Sector**  
Syria Hub  
Sheltercluster.org  
Coordinating Humanitarian Shelter

## ABOUT US

### We Collaborate

**We coordinate for the common good.**

The Shelter Sector in Syria is one of the activated sectors to respond to the civil war that erupted in 2011. The sector values the need to collectively address gaps, ensure complementarity and strengthen accountability to the people it aims to help. Activated in 2012, the sector has been co-led by the United Nations High Commissioner for Refugees (UNHCR) with the Ministry of Local Administration (MoLA) in Syria.

### We Share Information

**We process data to better decide.**

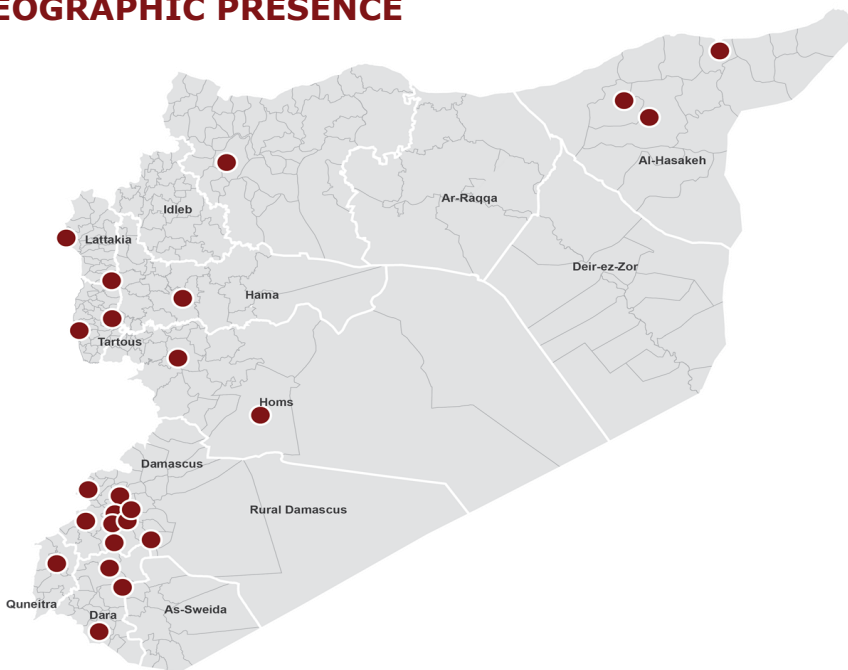
The sector functions using evidence-based approach. It treats information as support to better protect the displaced people it aims to assist. With information management, the sector is able to identify the most vulnerable, deliver appropriate response, and monitor its impact. The sector recognizes the need to provide the right information to the right people at the right time using the right channels.

### We Rebuild Lives

**We rebuild homes to alleviate suffering.**

More than rehabilitating shelters, the sector provides hope to vulnerable displaced people. In every shelter project the sector provides, it helps these people get back on their feet. Ranging from live-saving shelter support to resilient-oriented shelter assistance, the sector has been committed to provide durable and long-term shelter solutions to all affected population in Syria.

## GEOGRAPHIC PRESENCE



**20** SHELTER  
SECTOR  
PARTNERS

**74** ACTIVE  
SECTOR  
MEMBERS

**30** COVERED  
SUB-DISTRICTS  
OUT OF 272

**147** SHELTER  
PROJECTS  
OCTOBER 2016

## SECTOR PARTNERS

### Co-Lead Agencies



### Local NGOs

AL BIRR	AOUN	CHILD CARE SOCIETY
AL INSHAAT		
GOPA	SSSD	SYRIA TRUST
TAALOUF		

### International NGOs



### UN



## CONTACT US

### Shelter Sector Coordination Team

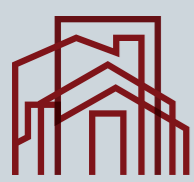
Nadia Carlevaro, Sector Coordinator ([carlevar@unhcr.org](mailto:carlevar@unhcr.org))  
Bareaa Alkafre, Asst. Shelter Officer ([alkafre@unhcr.org](mailto:alkafre@unhcr.org))  
Muhammad Shazad, IM Officer ([shahzadm@unhcr.org](mailto:shahzadm@unhcr.org))  
Corazon C. Lagamayo, IM Officer ([lagamayo@unhcr.org](mailto:lagamayo@unhcr.org))  
Maha Shaaban, IM Associate ([shabanm@unhcr.org](mailto:shabanm@unhcr.org))



[sydashltr@unhcr.org](mailto:sydashltr@unhcr.org)

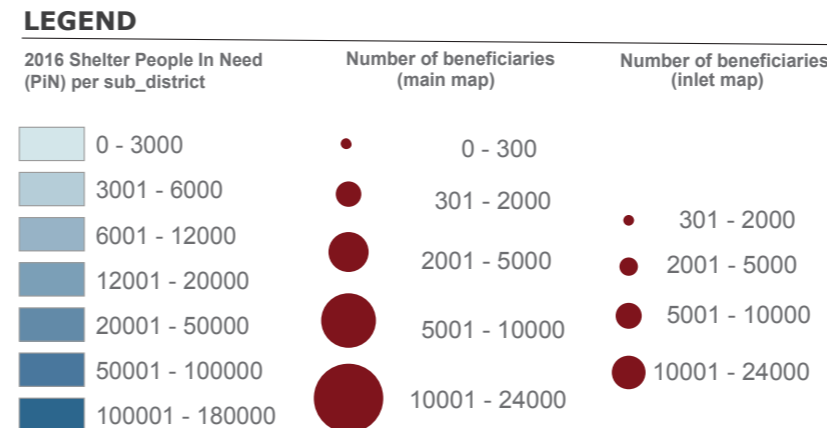
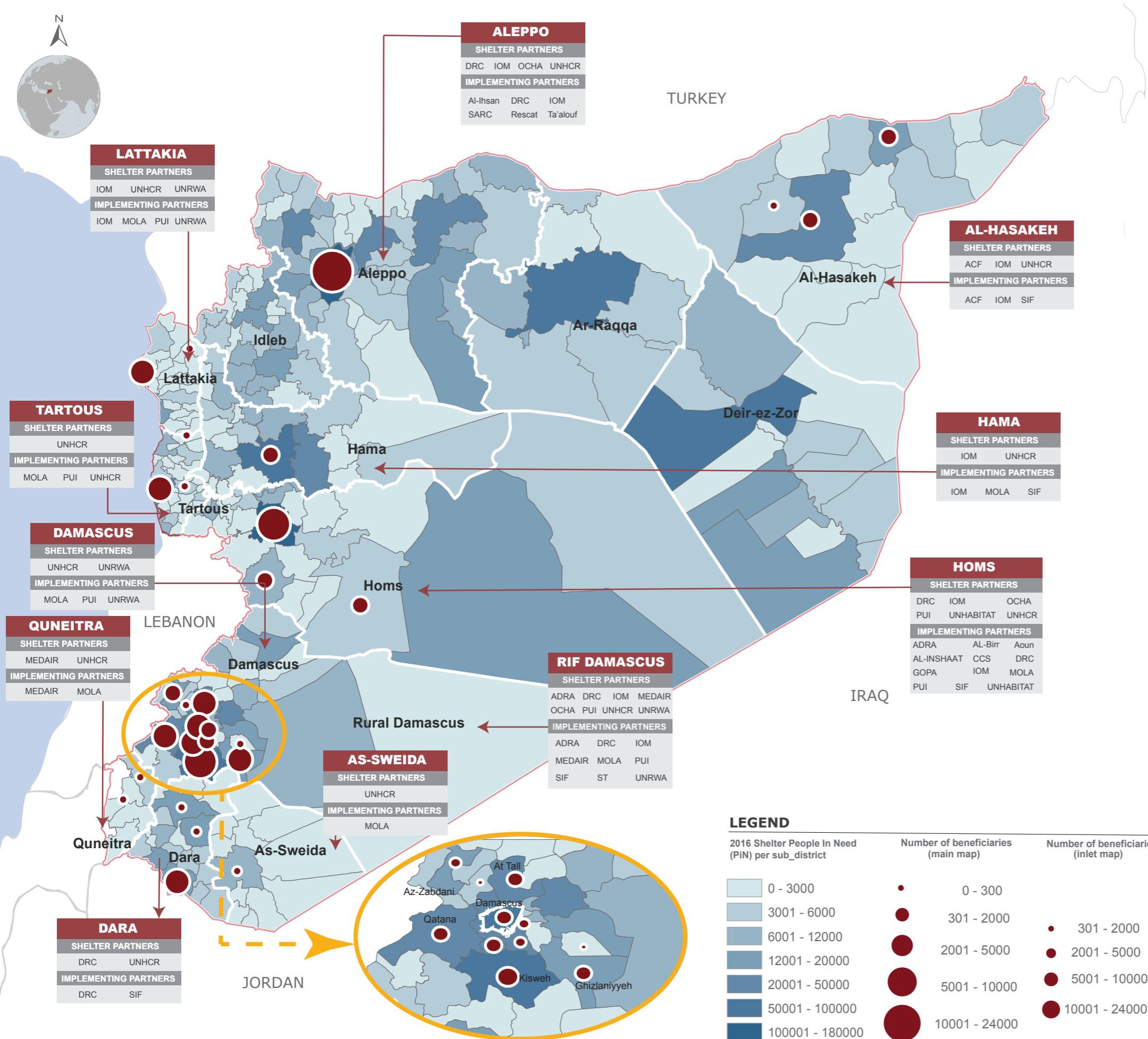


[www.sheltercluster.org/response/syria-hub](http://www.sheltercluster.org/response/syria-hub)



# SYRIA: SHELTER RESPONSE SNAPSHOT

Reporting Period: January - October 2016



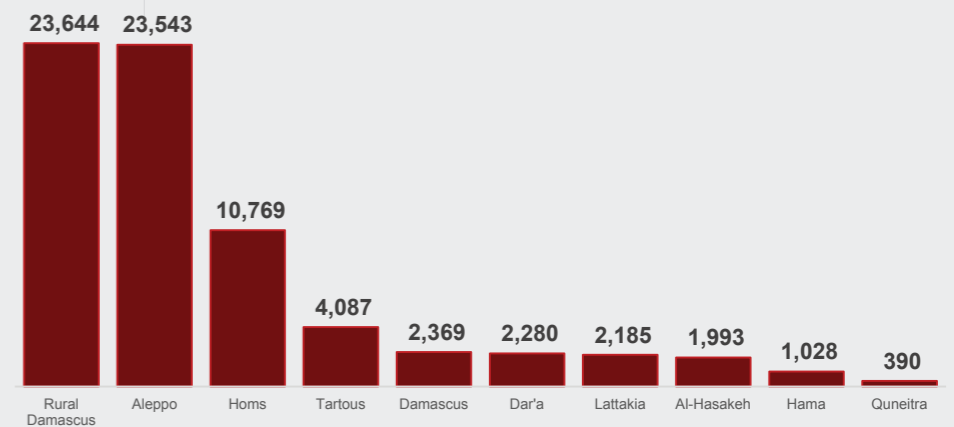
## TOTAL BENEFICIARIES ASSISTED

# 72,288

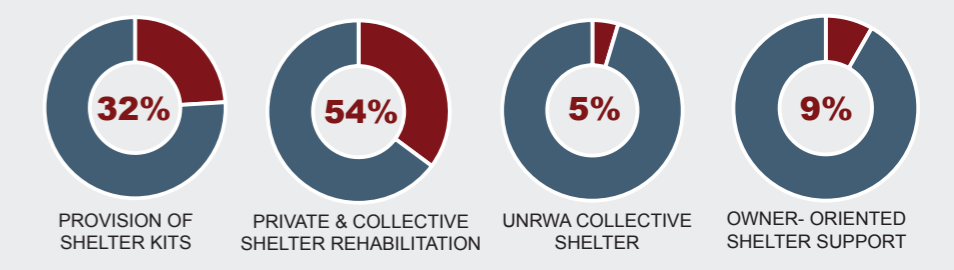
2.4 M overall People in Need (PiN)  
1.2 M targeted PiN / HRP 2016:

24% of 300,000 targeted PiN (in shelter) by Syria Hub

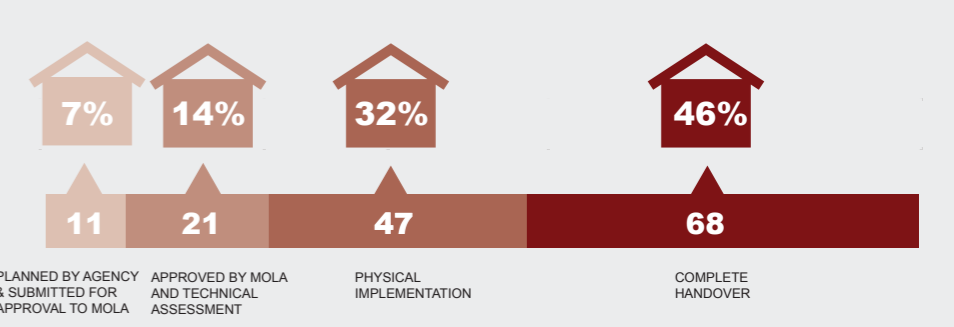
## BENEFICIARIES REACHED PER GOVERNORATE



## BENEFICIARIES REACHED BY TYPE OF SUPPORT



## SHELTER PROJECTS PER STAGE



## SHELTER SECTOR PARTNERS

CO-LEAD AGENCIES		SHELTER PARTNERS			
		ACF	ADRA	Al-Berr	Al-Inshaat
		Aoun	Ai-Ihsan	CCS	DRC
		GOPA	IOM	MEDAIR	PUI
		RESCATE	SARC	SIF	Social Care
		ST	AL-Ta'alouf	UNHabitat	UNRWA

## SYRIA: Shelter Sector 4W January - October 2016

Governorate	Implementing Partner	Funding Agency	Type of Activity	Target Individuals	Individuals Reached	Implementation Status
Aleppo	Al Taalouf Charity Association	OCHA	(blank)	2,977		Ongoing
Aleppo	Al-Ihsan Charity and	OCHA	(blank)	1,260		Planned
Aleppo	DRC	DRC	Collective Shelter Rehabilitation	620	620	Completed
Aleppo	DRC	DRC	Collective Shelter Rehabilitation	3,480	1,420	Ongoing
Aleppo	IOM	IOM	Provision of emergency Shelter Kits	1,665	1,665	Completed
Aleppo	ONG Rescate Syria	OCHA	(blank)	9,850		Planned
Aleppo	SARC	UNHCR	Provision of emergency Shelter Kits	9,362	9,362	Completed
Aleppo	Syria Trust Development	UNHCR	Owner-Oriented Shelter Support	460	-	Ongoing
Aleppo	Ta'alouf	OCHA	Collective Shelter Rehabilitation	3,860	1,360	Completed
Aleppo	Ta'alouf	UNHCR	Collective Shelter Rehabilitation	2,485	150	Ongoing
Aleppo	Ta'alouf	UNHCR	Owner-Oriented Shelter Support	1,000	-	Ongoing
Aleppo	Ta'alouf	UNHCR	Provision of emergency Shelter Kits	8,966	8,966	Completed
Al-Hasakeh	ACF-SP	ACF-SP	Collective Shelter Rehabilitation	763	763	Ongoing
Al-Hasakeh	IOM	IOM	Provision of emergency Shelter Kits	500	755	Completed
Al-Hasakeh	SIF	UNHCR	Collective Shelter Rehabilitation	455	475	Completed
As-Sweida	MOLA	UNHCR	Collective Shelter Rehabilitation	1,430	-	Planned
Damascus	MOLA	UNHCR	Collective Shelter Rehabilitation	225	90	Ongoing
Damascus	PU	UNHCR	Collective Shelter Rehabilitation	319	319	Completed
Damascus	UNRWA	UNRWA	Management and Maintainance of UNRWA	1,960	1,960	Completed
Dar'a	DRC	DRC	Collective Shelter Rehabilitation	190	190	Completed
Dar'a	DRC	DRC	Private Shelter upgrade	1,150	1,150	Completed
Dar'a	DRC	UNHCR	Private Shelter upgrade	1,950	745	Ongoing
Dar'a	SIF	UNHCR	Collective Shelter Rehabilitation	75	75	Completed
Dar'a	SIF	UNHCR	Private Shelter upgrade	301	120	Ongoing
Hama	IOM	IOM	Provision of emergency Shelter Kits	500	538	Completed
Hama	IOM	IOM	Provision of emergency Shelter Kits	1,000	-	Planned
Hama	MOLA	UNHCR	Collective Shelter Rehabilitation	1,293	-	Planned
Hama	MOLA	UNHCR	Establishment & Support to O&M unites	410	200	Ongoing
Hama	SIF	UNHCR	Collective Shelter Rehabilitation	1,010	290	Ongoing
Homs	ADRA	UNHCR	Owner-Oriented Shelter Support	1,125	280	Ongoing
Homs	ADRA	UNHCR	Private Shelter upgrade	500	120	Planned
Homs	Al-Berr	UNHCR	Owner-Oriented Shelter Support	1,500	1,500	Completed
Homs	Al-Berr	UNHCR	Owner-Oriented Shelter Support	1,500	300	Ongoing
Homs	Al-Berr	UNHCR	Private Shelter upgrade	435	130	Ongoing
Homs	Alinshat Area Association	OCHA	(blank)	1,750		Planned
Homs	Aoun	UNHCR	Owner-Oriented Shelter Support	1,300	909	Ongoing
Homs	Child Care Society	OCHA	(blank)	900		Planned
Homs	Childhood care Charity	UNHCR	Owner-Oriented Shelter Support	1,625	1,316	Ongoing
Homs	Childhood care Charity	UNHCR	Private Shelter upgrade	500	310	Ongoing
Homs	Church of Kanisat Saydat	UNHabitat	Owner-Oriented Shelter Support	500	500	Completed
Homs	DRC	DRC	Collective Shelter Rehabilitation	260	260	Completed
Homs	DRC	DRC	Collective Shelter Rehabilitation	1,260	1,260	Ongoing

Governorate	Implementing Partner	Funding Agency	Type of Activity	Target Individuals	Individuals Reached	Implementation Status
Homs	GOPA	UNHCR	Owner-Oriented Shelter Support	500	500	Completed
Homs	GOPA	UNHCR	Owner-Oriented Shelter Support	1,000	-	Planned
Homs	IOM	IOM	Capacity Building/ Training	166	166	Completed
Homs	IOM	IOM	Owner-Oriented Shelter Support	1,015	1,015	Completed
Homs	IOM	IOM	Owner-Oriented Shelter Support	1,750	-	Planned
Homs	IOM	IOM	Provision of emergency Shelter Kits	750	659	Completed
Homs	MOLA	UNHCR	Establishment & Support to O&M unites	2,000	800	Ongoing
Homs	MOLA	UNHCR	Owner-Oriented Shelter Support	250	-	Planned
Homs	PU	PU	Private Shelter upgrade	750	550	Completed
Homs	PU	UNHCR	Owner-Oriented Shelter Support	760	114	Ongoing
Homs	PU	UNHCR	Private Shelter upgrade	200	60	Ongoing
Homs	Secours Islamique France	OCHA	(blank)	1,063		Planned
Homs	UNHabitat	UNHabitat	Capacity Building/ Training	20	20	Completed
Lattakia	IOM	IOM	Owner-Oriented Shelter Support	250	-	Planned
Lattakia	MOLA	UNHCR	Establishment & Support to O&M unites	4,750	1,900	Ongoing
Lattakia	PU	UNHCR	Collective Shelter Rehabilitation	265	265	Completed
Lattakia	UNRWA	UNRWA	Management and Maintainance of UNRWA	20	20	Completed
Quneitra	MEDAIR	MEDAIR	Provision of emergency Shelter Kits	1,250	-	Planned
Quneitra	MOLA	UNHCR	Collective Shelter Rehabilitation	225	90	Ongoing
Quneitra	MOLA	UNHCR	Collective Shelter Rehabilitation	150	-	Planned
Quneitra	MOLA	UNHCR	Establishment & Support to O&M unites	750	300	Ongoing
Rural Damascus	ADRA	ADRA	Collective Shelter Rehabilitation	900		Completed
Rural Damascus	ADRA	ADRA	Collective Shelter Rehabilitation	500		Completed
Rural Damascus	ADRA	ADRA	Owner-Oriented Shelter Support	325		Completed
Rural Damascus	ADRA	ADRA	Private Shelter upgrade	3,125		Planned
Rural Damascus	ADRA	UNHCR	Private Shelter upgrade	3,100	3,940	Completed
Rural Damascus	ADRA	UNHCR	Private Shelter upgrade	2,000	400	Ongoing
Rural Damascus	ADRA	UNHCR	Private Shelter upgrade	500	-	Planned
Rural Damascus	DRC	DRC	Private Shelter upgrade	1,925	1,925	Completed
Rural Damascus	DRC	DRC	Private Shelter upgrade	675	415	Ongoing
Rural Damascus	DRC	DRC	Private Shelter upgrade	565	565	Planned
Rural Damascus	IOM	IOM	Provision of emergency Shelter Kits	1,000	912	Completed
Rural Damascus	MEDAIR	MEDAIR	Provision of emergency Shelter Kits	500	-	Planned
Rural Damascus	MOLA	UNHCR	Private Shelter upgrade	1,500	-	Planned
Rural Damascus	PU	PU	Private Shelter upgrade	865	1,575	Completed
Rural Damascus	PU	UNHCR	Collective Shelter Rehabilitation	815	815	Completed
Rural Damascus	PU	UNHCR	Private Shelter upgrade	935	374	Ongoing
Rural Damascus	SIF	UNHCR	Private Shelter upgrade	6,645	6,960	Completed
Rural Damascus	SIF	UNHCR	Private Shelter upgrade	7,258	3,326	Ongoing
Rural Damascus	Syria Trust Development	UNHCR	Owner-Oriented Shelter Support	475	100	Ongoing
Rural Damascus	Syria Trust Development	UNHCR	Private Shelter upgrade	890	800	Ongoing
Rural Damascus	The Syria Trust (The Syria	OCHA	(blank)	3,409		Planned
Rural Damascus	UNRWA	UNRWA	Management and Maintainance of UNRWA	1,537	1,537	Completed
Tartous	MOLA	UNHCR	Establishment & Support to O&M unites	1,750	700	Ongoing
Tartous	PU	UNHCR	Collective Shelter Rehabilitation	3,087	3,087	Completed
Tartous	UNHCR	UNHCR	Collective Shelter Rehabilitation	300	300	Completed
<b>Total</b>				<b>135,136</b>	<b>72,288</b>	