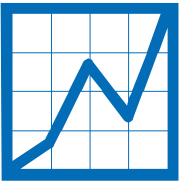


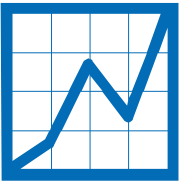
HOW INFORMATION MANAGEMENT SUPPORTS THE HUMANITARIAN RESPONSE
IN LEBANON ?



INFORMATION MANAGEMENT

Why do sectors need information management

- ❖ Tools to track sector activities and achievements(3W/5W etc...)
- ❖ Standardize datasets: Geographic data sets, population figures
- ❖ Set up of indicators
- ❖ Gap Analysis
- ❖ Coordination of needs assessment
- ❖ Maps and maps
- ❖ Dashboards
- ❖ Management of Inter-Agency / sector contact list
- ❖ Dissemination of information – like a web portal

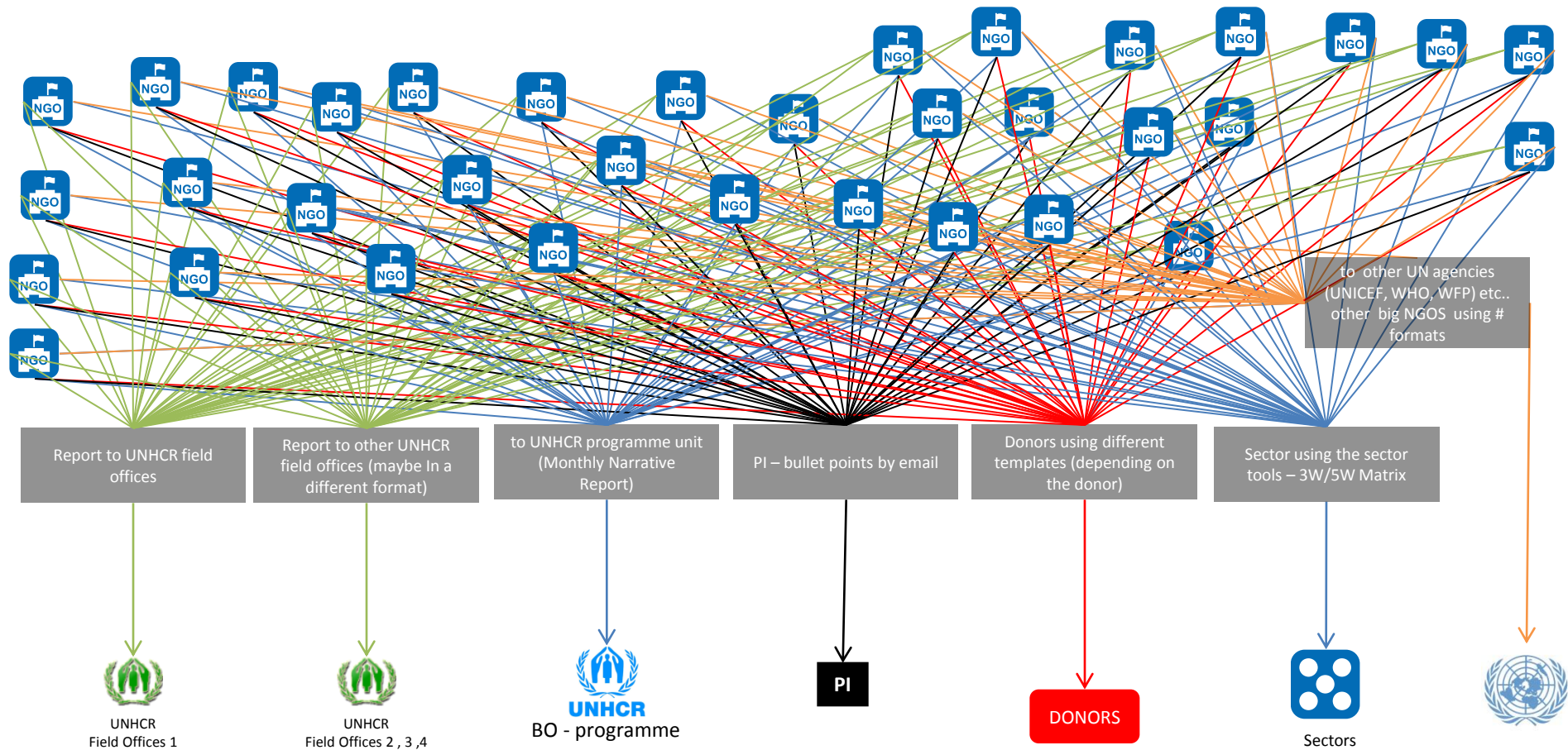


INFORMATION MANAGEMENT

What happens when information is not coordinated?

- ❖ Conflicting figures
- ❖ Duplication of efforts
- ❖ Gaps of information – and gaps in the response
- ❖ Wasted efforts
- ❖ Unpredictable dissemination
- ❖ Sector members feeling uninformed





UNHCR Lebanon has 34 Implementing Partners

There are over 100 actors in Lebanon (impossible to display on the chart)

Users of the reports (UN, Sectors, etc.) still need to compile and analyse all this information

How can we make this simpler?

Tools to track sector activities and achievements

Simple (3W / 5W Matrix)

WHO		WHERE		WHAT	Cumulative Quantity since Jan 2013, including current Month (# of Items)			
Organization	Funded By	Governorate	District	Item	Quantity to Syrians	Quantity to Palestinian Refugees from Syria	Quantity to Lebanese (Returnees and/or Vulnerable)	Cumulative Quantity (Calculated - DO NOT ENTER MANUALLY)
DRC	UNHCR	Mount Lebanon	Chouf	Standard NFI Kit for Newcomers (the complete standard kit)	1000	50	50	1100
DRC	UNHCR	Mount Lebanon	Chouf	Clothes Voucher	100	0	50	150
DRC	UNHCR	Mount Lebanon	Chouf	Blanket (of high thermal value, or Quilt) for winter use	1000	50	50	1100
DRC	UNHCR	Beirut	Beirut	Cash for Heating Fuel	50	50	50	150

Or, more advanced – ex: Activity Info

Save
New
Delete

- Acute
- Attributes
- Indicators
- Communication for Nutrition
- Attributes
- Indicators

ID:

Name:

Category:

Units:

Aggregation Method:

List Header:

Description:

Mandatory:

Standardize Datasets

Geographic data sets, population figures

P_code	Latitude	Longitude	Governorate_UN	Caza	Village_Name	CAS_CODE	CAS_CODE_UN	CA
LBN11062	33.881680	35.525426	Beirut	Beirut	Corniche El Naher	10650	LBN10650	Ac
LBN11082	33.878300	35.514800	Beirut	Beirut	Najmeh	10650	LBN10650	Ac
LBN11001	33.878312	35.520059	Beirut	Beirut	Aadlyeh	10650	LBN10650	Ac
LBN11084	33.879300	35.525400	Beirut	Beirut	Palais De Justice	10650	LBN10650	Ac
LBN11029	33.881238	35.518346	Beirut	Beirut	Hotel Dieu	10650	LBN10650	Ac
LBN11012	33.881680	35.525426	Beirut	Beirut	Corniche en Nahr	10650	LBN10650	Ac
LBN11088	33.883800	35.526800	Beirut	Beirut	Sioufi	10650	LBN10650	Ac
LBN11083	33.885100	35.511700	Beirut	Beirut	Nasra	10650	LBN10650	Ac
LBN11002	33.885175	35.519117	Beirut	Beirut	Achrafiye	10650	LBN10650	Ac
LBN11017	33.887586	35.524943	Beirut	Beirut	El Ghabe	10650	LBN10650	Ac
LBN11027	33.889315	35.512327	Beirut	Beirut	Fourn el Hayek	10650	LBN10650	Ac
LBN11034	33.890694	35.520098	Beirut	Beirut	Mar Mitr	10650	LBN10650	Ac
LBN11030	33.898622	35.490426	Beirut	Beirut	Jounblat	10110	LBN10110	Ai
LBN11003	33.900039	35.485097	Beirut	Beirut	Ain Mreisse	10110	LBN10110	Ai
LBN11056	33.900805	35.477803	Beirut	Beirut	Universite Americaine	10110	LBN10110	Ai
LBN11009	33.888167	35.500906	Beirut	Beirut	Beirut	10350	LBN10350	Ba

Data Source UNHCR - proGres Registration System

Description Syrian Refugees by Location in Lebanon. Includes breakdown by age group and gender.

Date 30-Oct-13

P-code	Governorate	District	Village	Persons	Households	Females	Males
LBN11001	LEB- Beirut	Beirut	Aadlyeh	84	22	47	37
LBN11002	LEB- Beirut	Beirut	Achrafiye	1405	448	688	717
LBN11004	LEB- Beirut	Beirut	Ain El Tine	40	10	17	23
LBN11003	LEB- Beirut	Beirut	Ain Mreisse	193	52	93	100
LBN11005	LEB- Beirut	Beirut	Bab Idriss	19	6	10	9
LBN11006	LEB- Beirut	Beirut	Bachoura	21	7	11	10
LBN11007	LEB- Beirut	Beirut	Basta Faouka	380	94	185	195
LBN11060	LEB- Beirut	Beirut	Basta Tahta	315	81	156	159
LBN11061	LEB- Beirut	Beirut	BCD	16	5	6	10
LBN11009	LEB- Beirut	Beirut	Beirut	3804	965	1875	1929

Set up of indicators

Example:

Percentage of households with adequate shelter

Percentage of refugee students enrolled in schools

No. of students per teacher

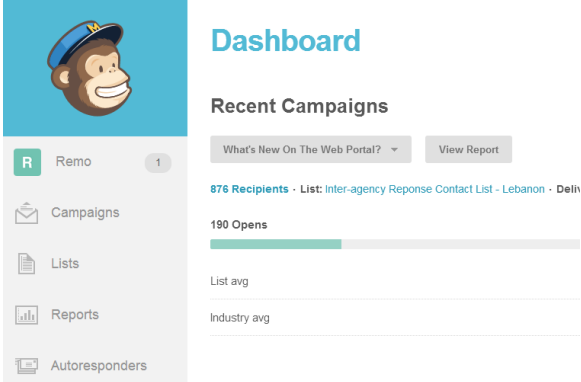
Percentage of families with latrines

Contact List

Simple,
Using excel

Name	Organization	Organization Type	Title	Email Address	Telephone	WASH WG Beirut	WASH WG Mt Lebanon	WASH WG Bekaa	WASH WG Qobayat	WASH WG North	WASH WG South
Paolo LUBRANO	ACF	NGO	Country Director Lebanon	[REDACTED]	[REDACTED]	✓	✓	✓	✓	✓	✓
Mutasim Hamdan	ACF	NGO	Emergency Coordinator	[REDACTED]	[REDACTED]						
Maria Cristina Portales Carrandi	ACF	NGO	Hygiene Promotion Supervisor	[REDACTED]	[REDACTED]	✓	✓	✓	✓	✓	✓
Adele Elias	ACF	NGO	Assistant head of Programmes.	[REDACTED]	[REDACTED]	✓	✓	✓	✓	✓	✓
Sylvie Koshkarian	ACTED	NGO	Financial controller	[REDACTED]	[REDACTED]	✓	✓	✓	✓	✓	✓
Matthew Lucas	ACTED	NGO	Area Coordinator	[REDACTED]	[REDACTED]	✓	✓	✓	✓	✓	✓
[REDACTED]	ACTED	NGO	WASH Project	[REDACTED]	[REDACTED]	✓	✓	✓	✓	✓	✓

Or, more advanced ...
Using mail chimp or
Similar tools



Dashboard

Recent Campaigns

What's New On The Web Portal? View Report

876 Recipients - List: Inter-agency Reponse Contact List - Lebanon - Deliv

190 Opens

List avg

Industry avg

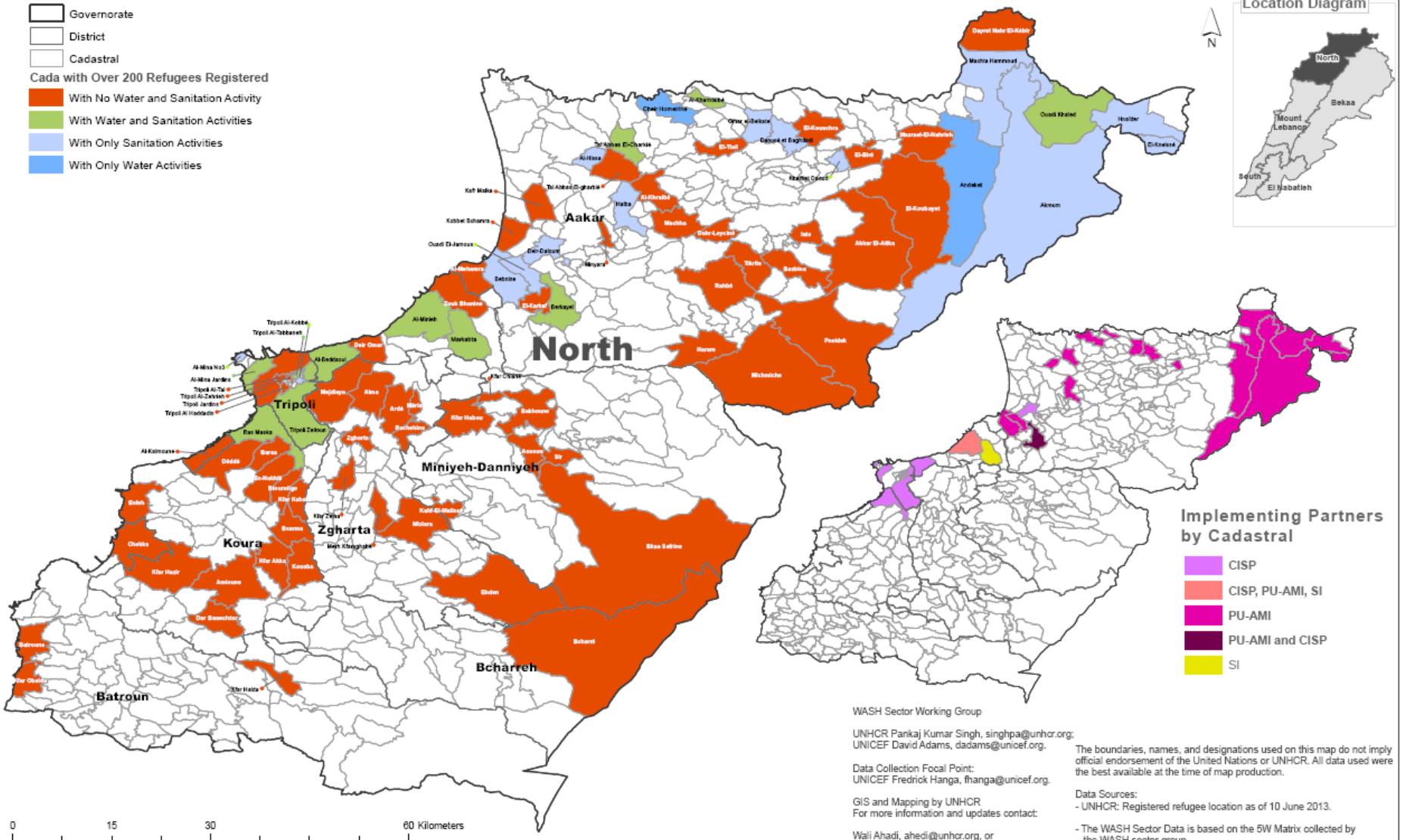
- Remo 1
- Campaigns
- Lists
- Reports
- Autoresponders

SYRIA REFUGEE RESPONSE

WASH Sector Working Group
 Implementation of Water and Sanitation Activities by Partners
 From January to May 2013
 North Lebanon



- Governorate
- District
- Cadastral
- Cada with Over 200 Refugees Registered**
- With No Water and Sanitation Activity
- With Water and Sanitation Activities
- With Only Sanitation Activities
- With Only Water Activities



- Implementing Partners by Cadastral**
- CISP
 - CISP, PU-AMI, SI
 - PU-AMI
 - PU-AMI and CISP
 - SI

WASH Sector Working Group
 UNHCR Pankaj Kumar Singh, singhpa@unhcr.org;
 UNICEF David Adams, dadams@unicef.org.
 Data Collection Focal Point:
 UNICEF Fredrick Hanga, fhanga@unicef.org.
 GIS and Mapping by UNHCR
 For more information and updates contact:
 Wali Ahadi, ahedi@unhcr.org, or
 Rodolphe Ghossoub, ghossoub@unhcr.org

The boundaries, names, and designations used on this map do not imply official endorsement of the United Nations or UNHCR. All data used were the best available at the time of map production.

Data Sources:
 - UNHCR: Registered refugee location as of 10 June 2013.
 - The WASH Sector Data is based on the 5W Matrix collected by the WASH sector group

SYRIA REFUGEE RESPONSE

LEBANON Non-Food Items (NFI) Sector Activities Gaps Map

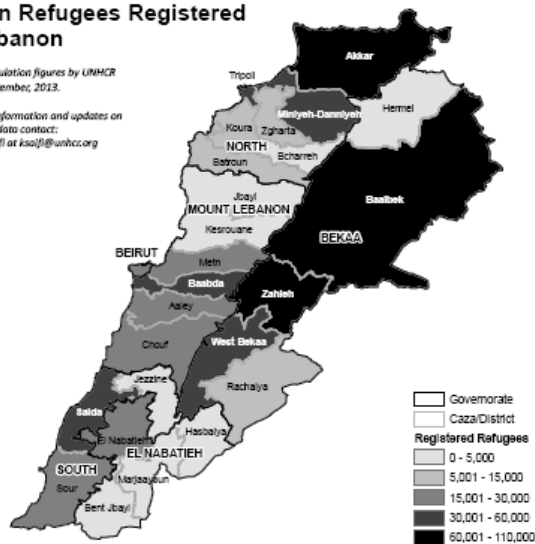
Index of key NFI Items per District (From January to August, 2013)

12 organizations reported their activities using the NFI Sector Distribution Matrix

Syrian Refugees Registered in Lebanon

Refugee population figures by UNHCR as of 14 September, 2013.

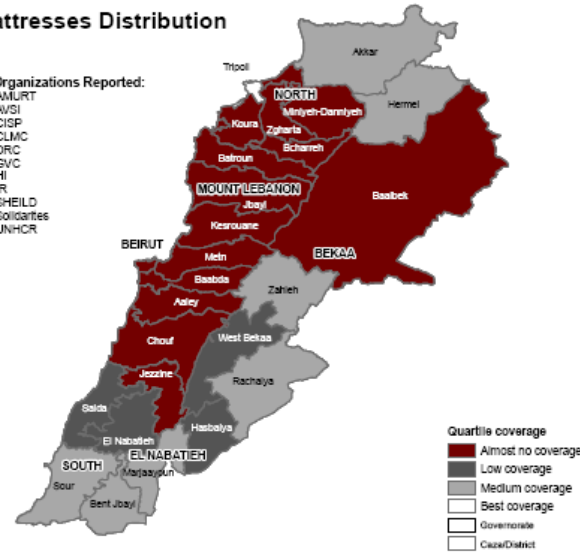
For further information and updates on the refugee data contact: Rana G. Kasji | rkasji@unhcr.org



Mattresses Distribution

Organizations Reported:

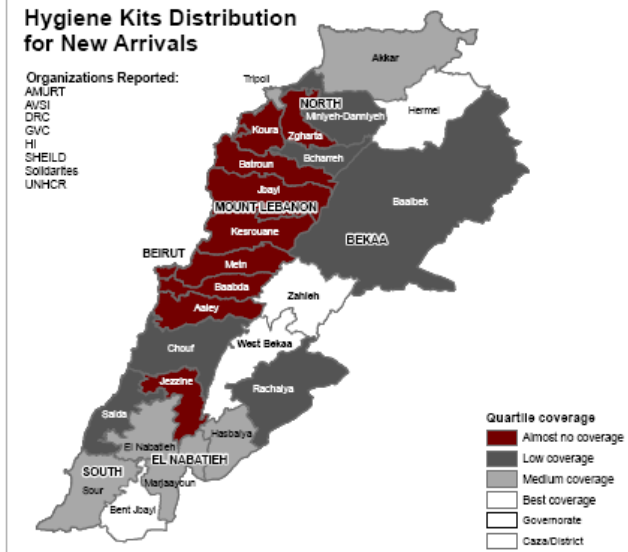
AMURT
AVSI
CISP
CLMC
DRC
GVC
HI
IR
SHEILD
Solidarites
UNHCR



Hygiene Kits Distribution for New Arrivals

Organizations Reported:

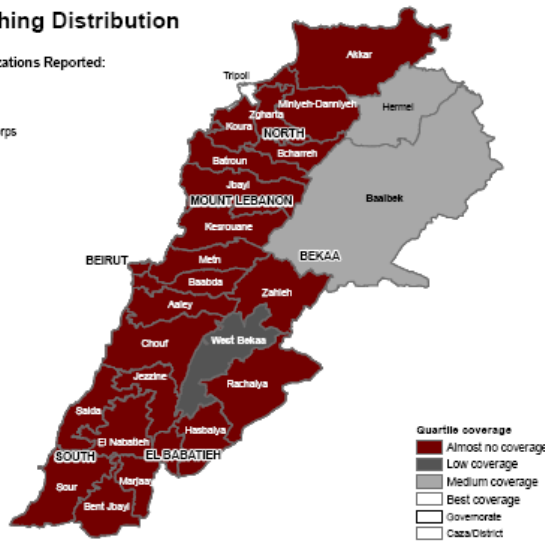
AMURT
AVSI
DRC
GVC
HI
SHEILD
Solidarites
UNHCR



Clothing Distribution

Organizations Reported:

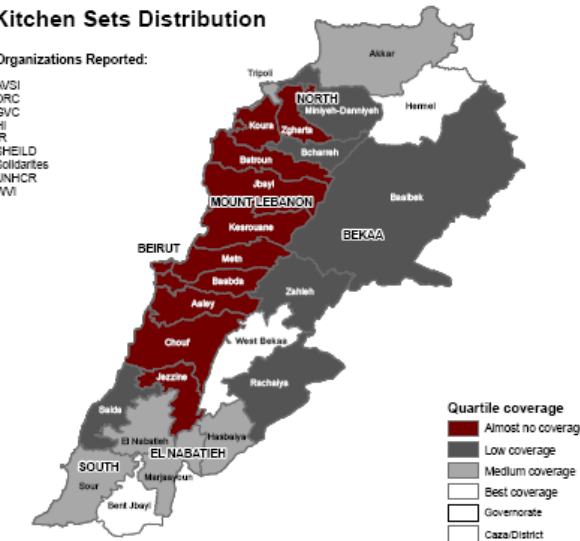
AMURT
CISP
DRC
Meroy Corps



Kitchen Sets Distribution

Organizations Reported:

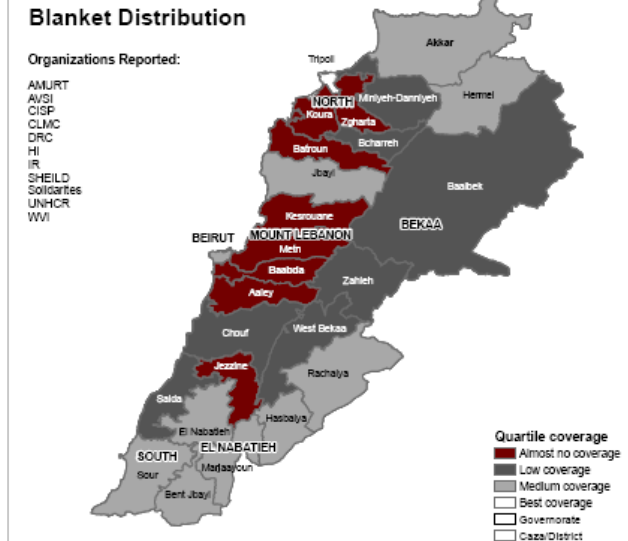
AVSI
DRC
GVC
HI
IR
SHEILD
Solidarites
UNHCR
WVI

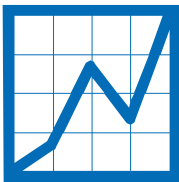


Blanket Distribution

Organizations Reported:

AMURT
AVSI
CISP
CLMC
DRC
HI
IR
SHEILD
Solidarites
UNHCR
WVI





إدارة المعلومات

LEBANON: Inter Agency Mapping Platform (IAMP) - Informal Settlements (IS)

31 May 2014



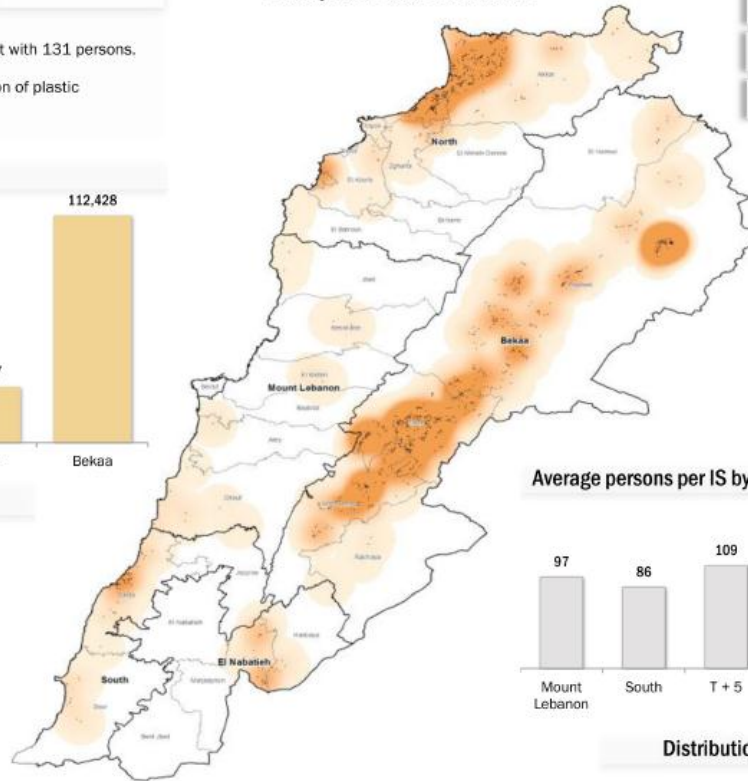
Informal Settlements Mapping Sweep # 2

UNHCR Information Management Unit

Summary

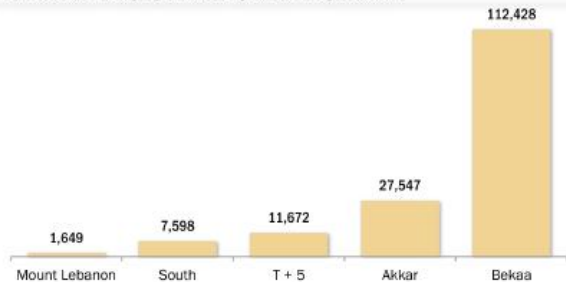
15% of Syrians refugees live in Informal settlements, The average size of an Informal Settlement is 21 shelter unit with 131 persons. The national level average is 6.1 Persons / shelter unit The hand-made shelters built by refugees are a combination of plastic sheetings, timber and locally available materials.

Density of Informal Settlements

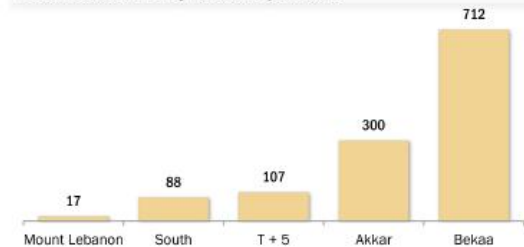


Total Number of Informal Settlements	1,224
Total Number of Refugees living in IS	160,894
Total Number of Shelter	26,296

Distribution of population by area of operation

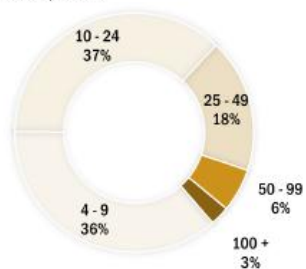


Distribution of IS by area of operation

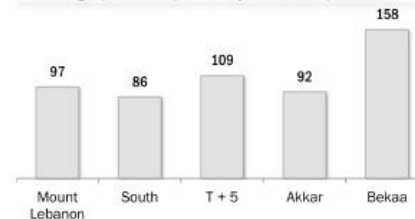


Breakdown by size of settlement

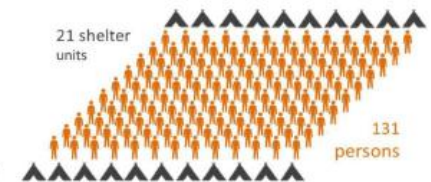
number of shelter per site



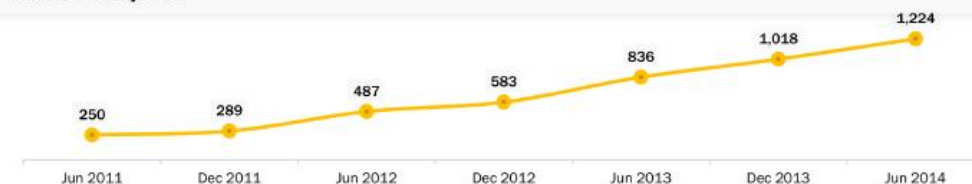
Average persons per IS by area of operation



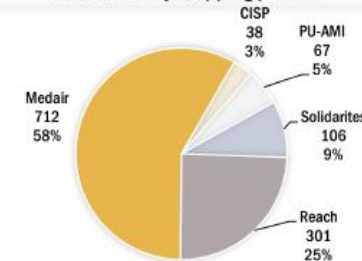
Composition of an average IS



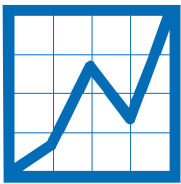
Number of IS by Date



Distribution by mapping partner



The boundaries and names used on this map do not imply official endorsement or acceptance by the United Nations.



DASHBOARDS

LEBANON: RRP6 MONTHLY UPDATE — SEPTEMBER

EDUCATION

KEY FACT OF THE MONTH

The 2014/15 school year started despite pending enrollment of Syrian refugees

HIGHLIGHTS:

In September, the 2014-15 school year commenced in Lebanon. A total of 6,105 children have enrolled, the majority being PRS and PRL enrolled in UNRWA schools and a handful of affected Lebanese. Syrian refugee children have not enrolled yet and are awaiting decisions from the Ministry of Education and Higher Education (MEHE).

The Ministry has announced the possibility to expand access to the first shift to Syrian refugee children, depending on funding commitment from the UN and the donor community. In addition, 57,000 Syrian refugee children will have access to the second shift in public schools.

An executive committee is working with MEHE on the implementation of Reaching All Children with Education (RACE) throughout the country. This plan includes how to increase access of quality educational programs both through formal and non-formal education to vulnerable Lebanese and refugee children.



Syrian refugees cannot wait to go back to school

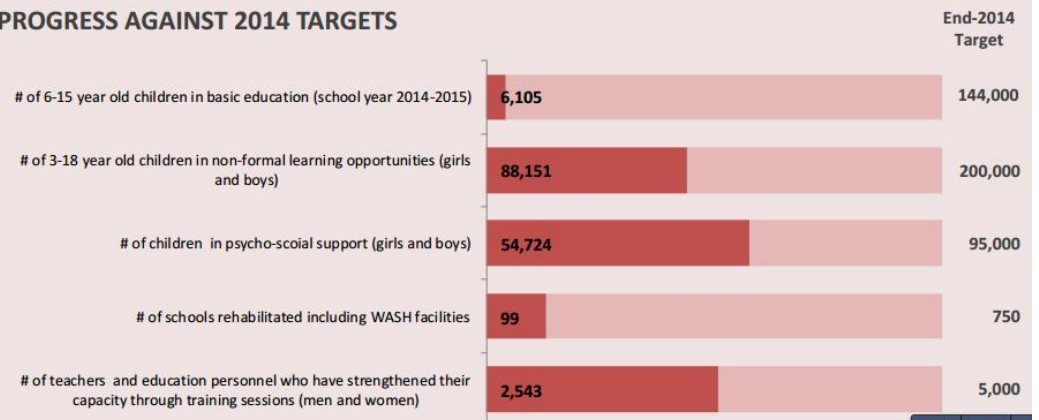
NEEDS ANALYSIS:

Due to the new school year, the indicator for formal education has been reset to zero with new enrollments starting this month, resulting in a low number of children enrolled in formal education. In addition, to avoid the difficulties and constraints that the Ministry of Education and Higher Education (MEHE) faced last year regarding the limited capacity to accommodate Lebanese and refugee students for year 2013-14, MEHE decided to regularize 2014-15 school enrollment. To date, MEHE has issued 2 circulars to phase the enrollment. A 3rd circular is expected to be issued soon in order to allow Syrian refugee children and other nationalities affected by the crisis to enroll in public schools.

Non-formal education programs have continued across the country, reaching to 88,150. These programs are aimed at expanding access to education for out-of-school children and preparing them to enroll in formal education at a later date. Even with these programs expanding, more than 300,000 school-aged children in Lebanon have not accessed any form of educational program this year.

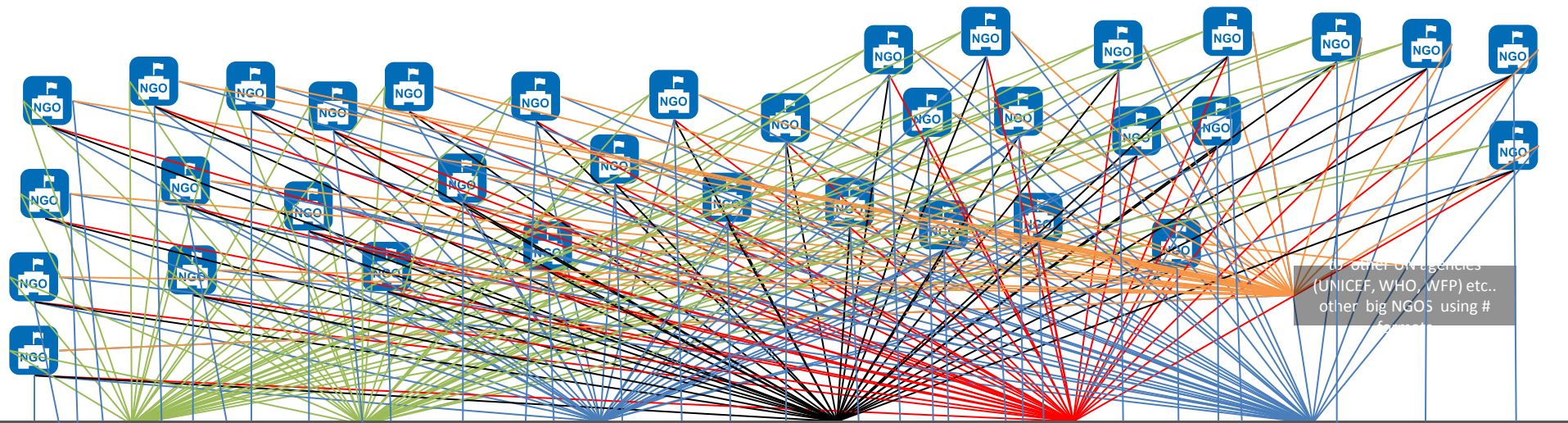
Nearly 100 schools have been rehabilitated, including the WASH facilities of these schools, to enhance the capacity of overburdened schools. More than 2,500 teachers have also been trained to strengthen their capacity as well. Psychosocial support programs continue to target children that have faced difficult and distressful moments, currently reaching nearly 55,000 children.

PROGRESS AGAINST 2014 TARGETS

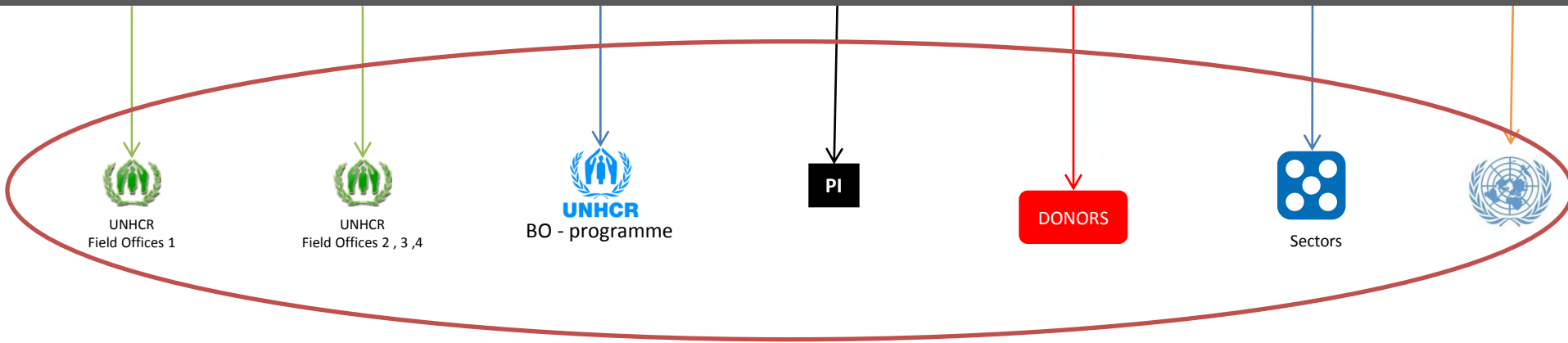


Source: figures reported above reflect the information reported to Sector Coordinators by Partners participating in Working Groups





A REPORTING INTERFACE BETWEEN ACTORS AND THE USERS

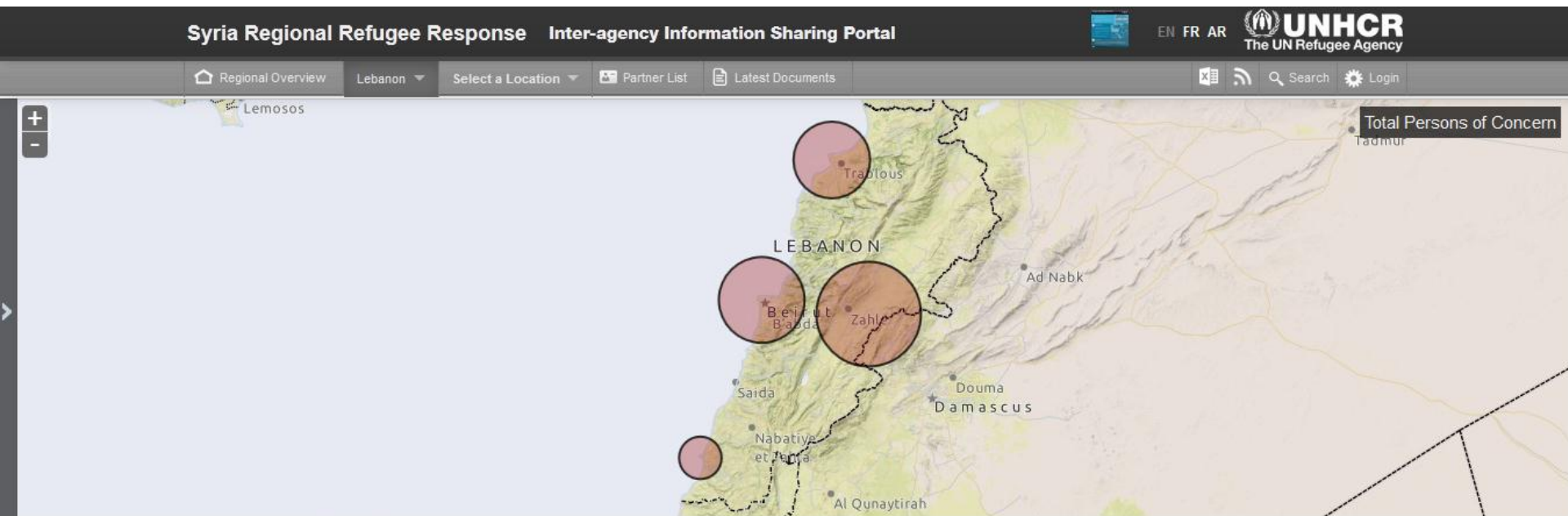


How can we make this simpler and better?

Information Sharing Web Portal

Tool to disseminate information and to assist in coordination

<https://data.unhcr.org/syrianrefugees>



This map does not imply official endorsement or acceptance by the United Nations

Total Persons of Concern

1,147,788

Last Updated 10 Dec 2014

Source - UNHCR, UNHCR
Registration

Registered Syrian Refugees

1,135,454

Last Updated 10 Dec 2014

Source - UNHCR, UNHCR
Registration

Demography

DONATE NOW



48th Edition of Field Exchange: Lebanon

The Lebanon section is part of a 172-page issue, which can be downloaded from the Regional page, and from www.enonline.net/fex.



Final calendar of

Scroll for More ↓