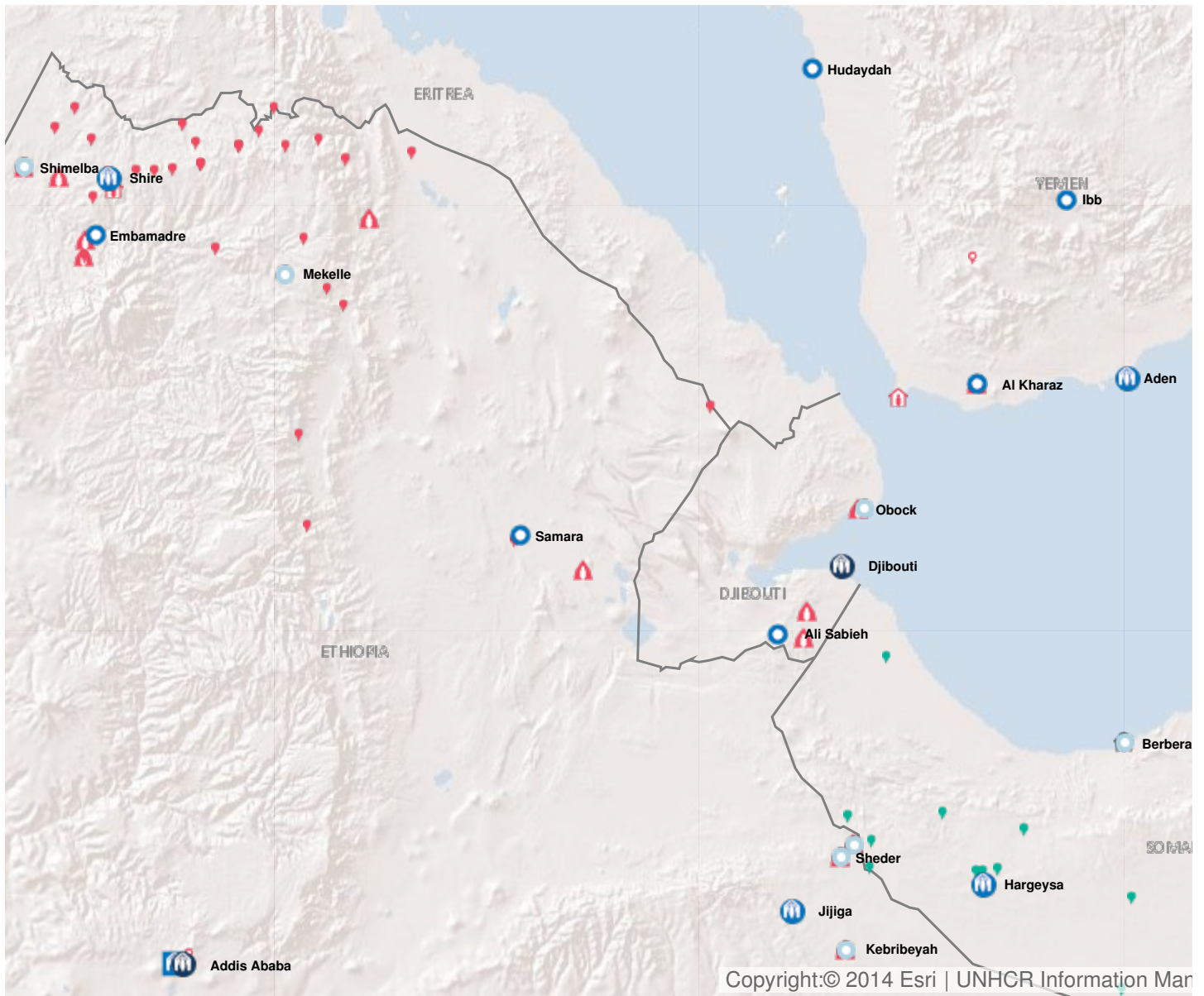


Operation: Djibouti

Location

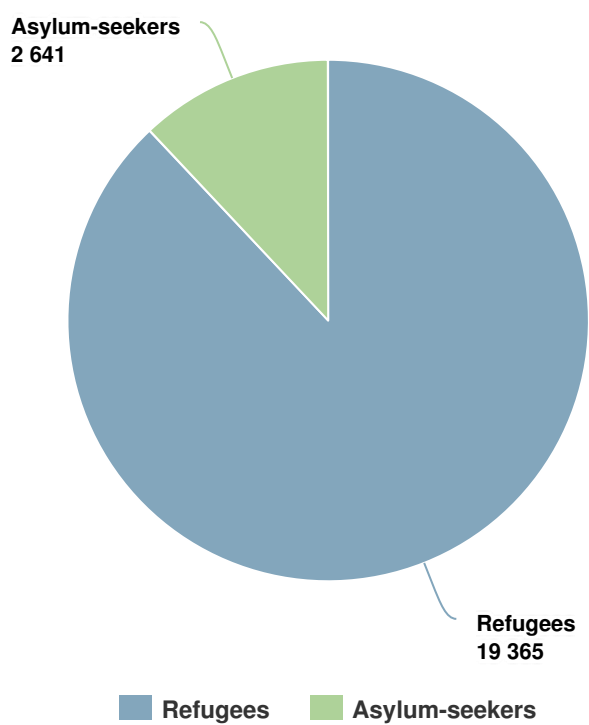


Latest update of camps and office locations **13 Jan 2016**. By clicking on the icons on the map, additional information is displayed.

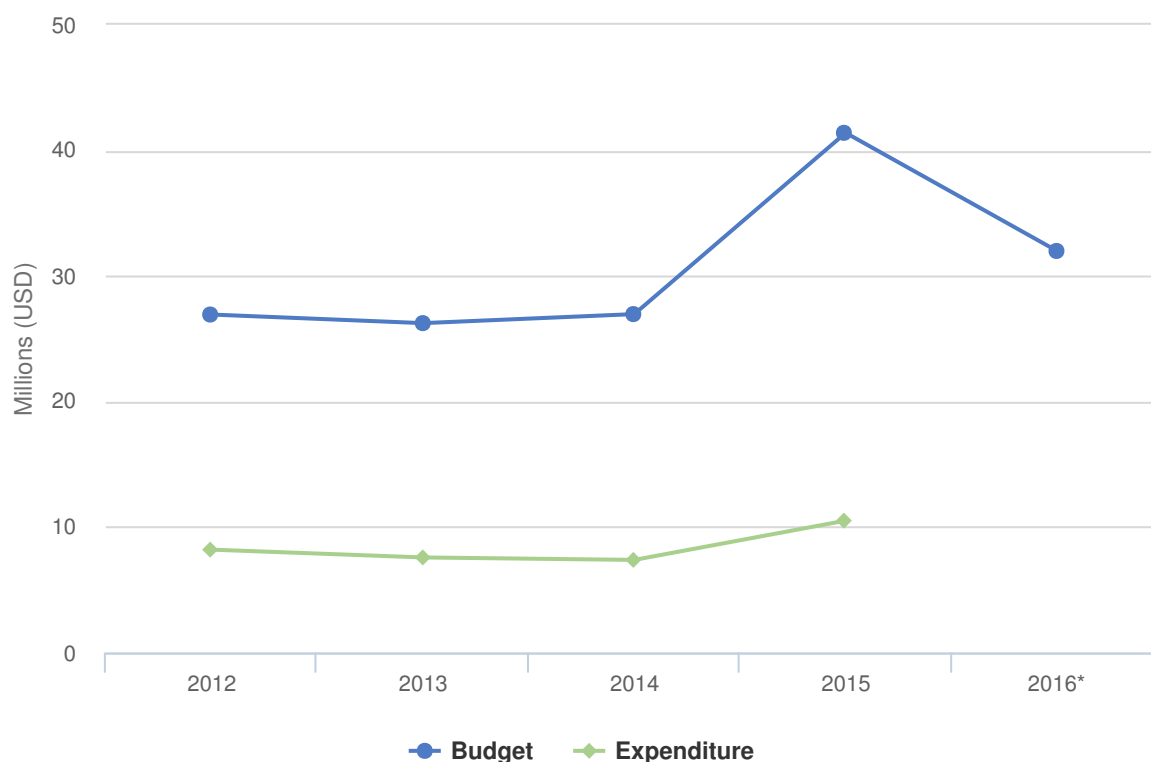
People of Concern

DECREASE IN
10% **2015**

2015	22,006
2014	24,362
2013	23,810



Budgets and Expenditure for Djibouti



In Djibouti, the poverty rate is around 40 per cent and unemployment affects up to 60 per cent of the population. In this difficult environment, the country is hosting close to 15,500 refugees, composed of Somalis (77 per cent), Ethiopians (16 per cent), Eritreans (6 per cent) and others (1 per cent).

Given the lack of resources in the country, refugees depend solely on humanitarian aid. Access to farmland and drinking water remain important challenges. The Kenyan education curriculum used in camp-based schools is not recognized by the Governments of Djibouti and Somalia's governments. In public hospitals, refugees are not considered as "vulnerable", meaning that UNHCR pays their full medical fees.

In 2016, UNHCR's operational priorities are to:

- Support the adoption of a national law on asylum
- Ensure access to the territory for asylum-seekers by reinforcing the National Eligibility Commission
- Ensure the delivery of birth certificates for refugee children born in Djibouti
- Promote livelihoods and activities aimed at self-reliance
- Respond to the basic needs of refugees
- Promote Djibouti's ratification of the statelessness conventions

UNHCR and its Government counterpart, ONARS (*Office National pour l'Assistance aux Réfugiés et Sinistrés*), will facilitate the voluntary repatriation of Somali refugees to Somaliland and Puntland, as well as their local integration or resettlement to third countries, where applicable.

2016 Original Budget for Djibouti | USD

The following table presents the original budget for this operation broken down at the objective level. Resource allocation at the objective level is subject to change during the course of the year as the operational situation evolves and priorities shift. The current budget by pillar, reflected in the bottom line of this table, is updated on a monthly basis and is replaced by the final budget at year-end.

	Pillar 1 Refugee programme	Total
Favourable Protection Environment		
Law and policy	121,305	121,305
Access to territory	266,849	266,849
	Subtotal	388,154
Fair Protection Processes and Documentation		
Reception conditions	235,105	235,105
Registration and profiling	288,918	288,918
Status determination	253,447	253,447
Individual documentation	48,052	48,052
Civil status documentation	444,809	444,809
	Subtotal	1,270,332
Security from Violence and Exploitation		
SGBV prevention and response	640,918	640,918
Child protection	206,105	206,105
	Subtotal	847,023
Basic Needs and Essential Services		
Health	1,780,210	1,780,210
Reproductive health and HIV/ Aids response	228,581	228,581
Nutrition	422,157	422,157
Food security	56,813	56,813
Water	848,710	848,710
Sanitation and hygiene	365,157	365,157
Shelter and infrastructure	2,807,210	2,807,210
Energy	760,762	760,762
Basic and domestic and hygiene Items	418,753	418,753
Services for persons with specific needs	330,052	330,052
Education	2,400,233	2,400,233
	Subtotal	10,418,639
Community Empowerment and Self Reliance		

	Pillar 1 Refugee programme	Total
Community mobilization	146,105	146,105
Natural resources and shared environment	161,866	161,866
Self-reliance and livelihoods	1,912,441	1,912,441
Subtotal	2,220,412	2,220,412
Durable Solutions		
Solutions strategy	77,052	77,052
Voluntary return	280,158	280,158
Integration	60,052	60,052
Resettlement	243,157	243,157
Subtotal	660,420	660,420
Leadership, Coordination and Partnerships		
Coordination and partnerships	192,157	192,157
Donor relations	65,052	65,052
Subtotal	257,210	257,210
Logistics and Operations Support		
Supply chain and logistics	363,210	363,210
Operations management, coordination and support	3,562,431	3,562,431
Subtotal	3,925,641	3,925,641
2016 Original Budget	19,987,830	19,987,830
Increase / Decrease	12,000,000	12,000,000
2016 Current Budget	31,987,830	31,987,830