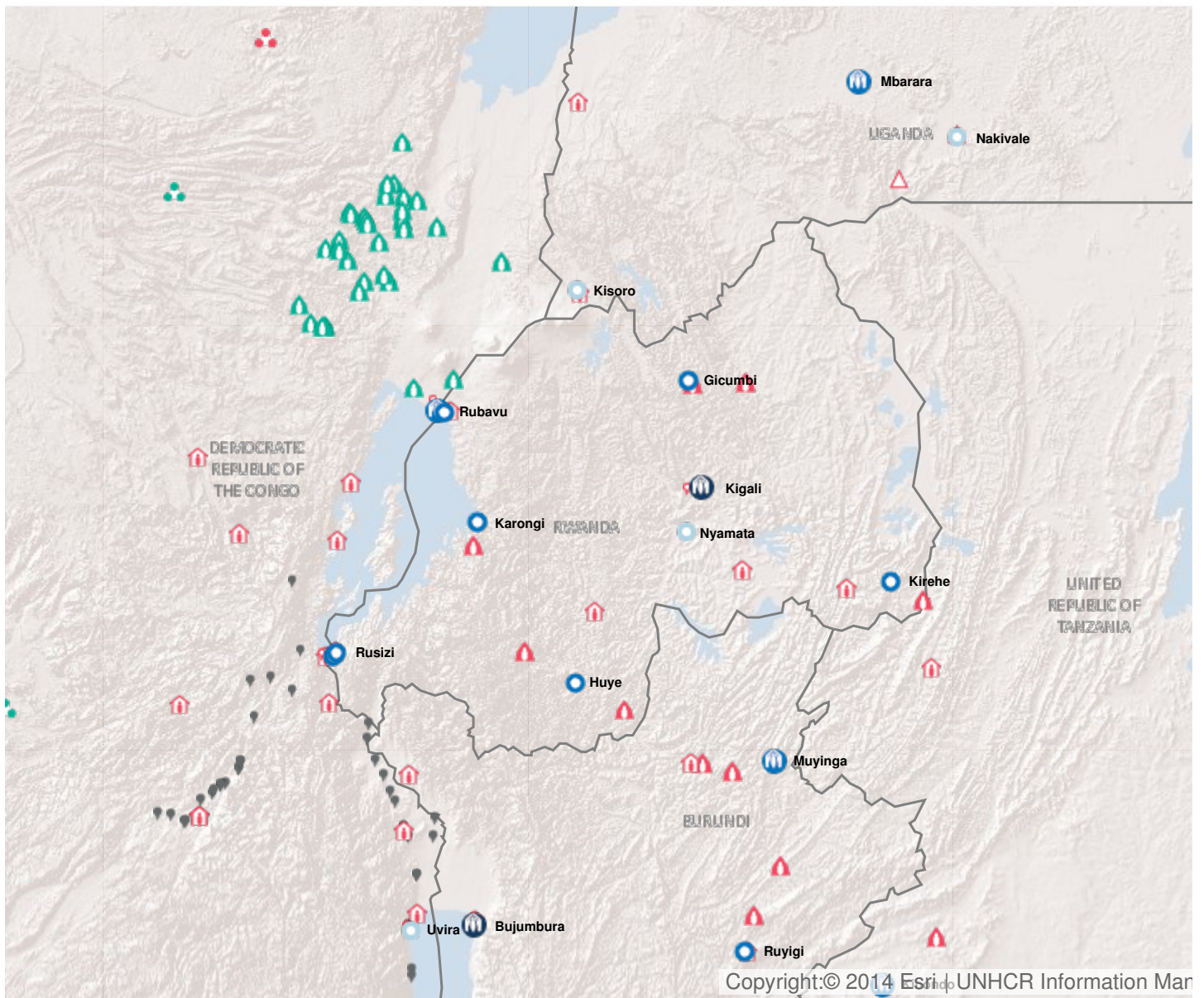


Operation: Rwanda

Location

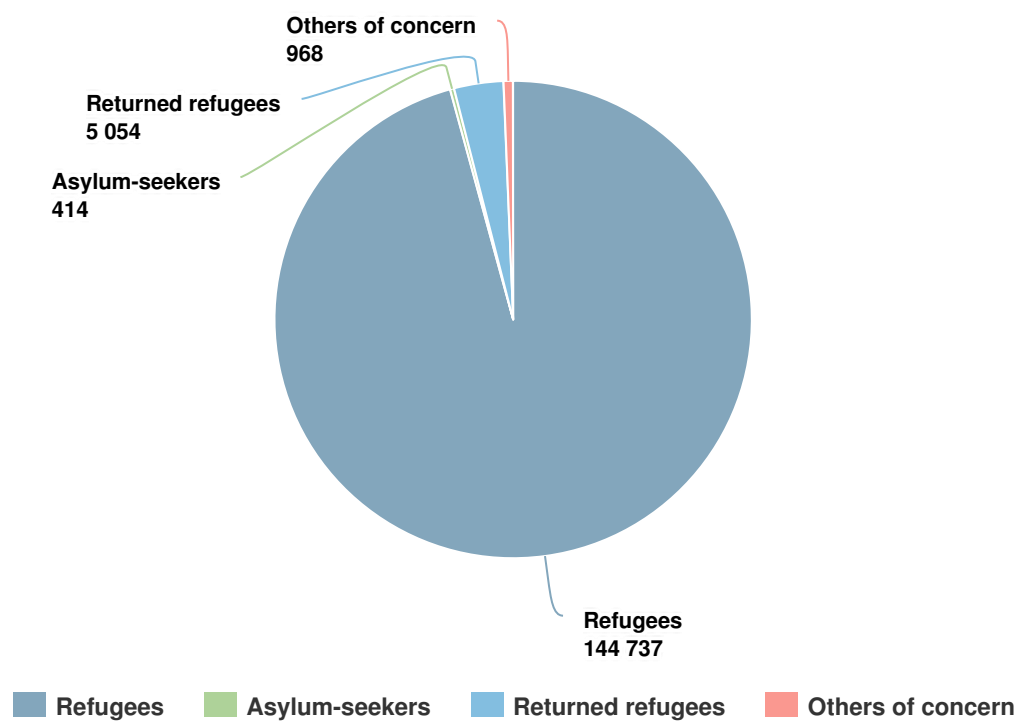


Latest update of camps and office locations **13 Jan 2016**. By clicking on the icons on the map, additional information is displayed.

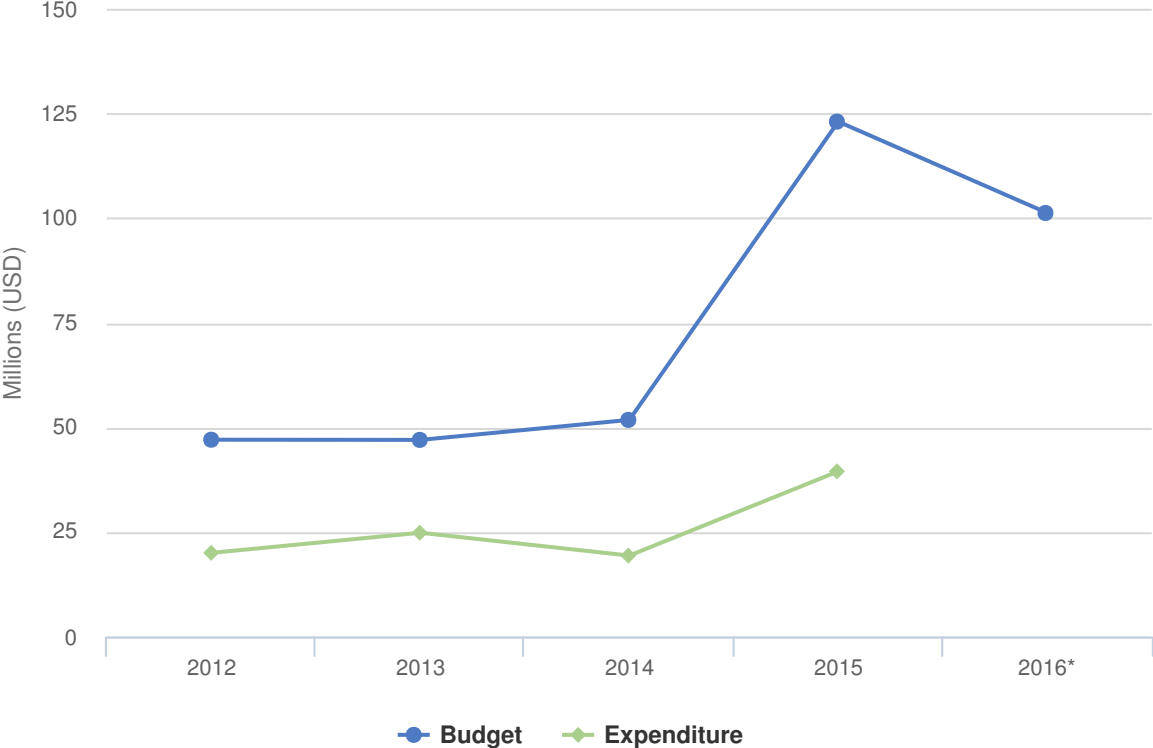
People of Concern

INCREASE IN
89% **2015**

2015	151,173
2014	80,124
2013	81,490



Budgets and Expenditure for Rwanda



While the security situation in Rwanda remains calm, the armed conflict close to its border with the eastern Democratic Republic of the Congo (DRC), as well as elections planned in some neighbouring countries, continue to destabilize the region, posing a risk of sudden mass influxes of refugees.

Rwanda has been hosting considerable numbers of refugees, principally from the DRC, as well as from other countries in Africa, for decades. The Government is fully committed to fulfilling its international obligations, acting in good faith in doing so. Rwanda has also been receiving thousands of returnees over the years, in particular since the invocation of the cessation clauses relating to Rwandan refugees in 2013. The Government has been forthcoming in identifying land suitable for reception centres and refugee camps, and continues to play a key role in camp management and coordination.

The main priorities in 2016 will be to build the capacity of the newly established national refugee status determination committee and other concerned Government institutions. Since the refugee population is made up of over 80 per cent women and children, UNHCR will prioritize child protection; the prevention of and response to SGBV; the integration of refugee teachers within the national education system; resettlement for Congolese refugees; return and reintegration of former Rwandan refugees in light of the invocation of the cessation clauses in 2013; improved access to primary health care, reproductive health and HIV; nutrition (targeted to vulnerable groups); referral care in emergencies; and improved access to essential medicines. UNHCR will provide individual shelters for families and gradually replace the pit and mobile latrines with dischargeable latrines; and whenever possible, will maintain or improve the supply of potable water in all camps.

UNHCR anticipates that population movements from the DRC and Burundi into Rwanda will continue in 2016. Another planning assumption is that thousands of Rwandan returnees will continue to repatriate throughout 2016 and beyond. Major constraints in this regard include land pressure in Rwanda, as well as the limited resources of UNHCR, the Government of Rwanda and partners for ensuring that reintegration is meaningful, and that obstacles are monitored and addressed.

2016 Original Budget for Rwanda | USD

The following table presents the original budget for this operation broken down at the objective level. Resource allocation at the objective level is subject to change during the course of the year as the operational situation evolves and priorities shift. The current budget by pillar, reflected in the bottom line of this table, is updated on a monthly basis and is replaced by the final budget at year-end.

	Pillar 1 Refugee programme	Pillar 3 Reintegration projects	Total
Favourable Protection Environment			
Law and policy	53,528	0	53,528
Legal remedies and legal assistance	270,501	0	270,501
Access to territory	67,176	0	67,176
Public attitudes towards persons of concern	142,663	0	142,663
Subtotal	533,868	0	533,868
Fair Protection Processes and Documentation			
Reception conditions	0	3,644,523	3,644,523
Registration and profiling	422,501	11,311	433,812
Status determination	35,014	0	35,014
Individual documentation	368,501	0	368,501
Civil status documentation	439,101	0	439,101
Family re-unification	147,751	0	147,751
Subtotal	1,412,868	3,655,833	5,068,701
Security from Violence and Exploitation			
SGBV prevention and response	1,216,033	4,811	1,220,844
Child protection	1,286,870	0	1,286,870
Subtotal	2,502,904	4,811	2,507,714
Basic Needs and Essential Services			
Health	2,593,393	153,181	2,746,574
Reproductive health and HIV/ Aids response	739,134	0	739,134
Nutrition	686,437	0	686,437
Water	2,543,431	523,811	3,067,242
Sanitation and hygiene	5,867,989	442,811	6,310,800
Shelter and infrastructure	1,486,809	128,811	1,615,620
Energy	1,937,239	83,061	2,020,300
Basic and domestic and hygiene Items	2,901,856	261,894	3,163,750
Services for persons with specific needs	257,006	0	257,006
Education	7,005,504	157,621	7,163,125

	Pillar 1 Refugee programme	Pillar 3 Reintegration projects	Total
Subtotal	26,018,799	1,751,189	27,769,988
Community Empowerment and Self Reliance			
Community mobilization	239,902	0	239,902
Co-existence with local communities	108,663	0	108,663
Natural resources and shared environment	353,146	0	353,146
Self-reliance and livelihoods	315,191	0	315,191
Subtotal	1,016,902	0	1,016,902
Durable Solutions			
Solutions strategy	0	122,621	122,621
Reintegration	0	13,811	13,811
Resettlement	797,337	0	797,337
Subtotal	797,337	136,432	933,769
Leadership, Coordination and Partnerships			
Coordination and partnerships	41,690	0	41,690
Donor relations	132,663	0	132,663
Subtotal	174,353	0	174,353
Logistics and Operations Support			
Supply chain and logistics	1,611,758	38,160	1,649,918
Operations management, coordination and support	1,886,590	444,661	2,331,251
Subtotal	3,498,348	482,821	3,981,169
2016 Original Budget	35,955,380	6,031,085	41,986,465
Increase / Decrease	59,227,320	0	59,227,320
2016 Current Budget	95,182,700	6,031,085	101,213,785