

Over 58,332 Syrian refugees submitted for resettlement or humanitarian admission

HIGHLIGHTS:

In Turkey, by the end of September 2016, UNHCR, in cooperation with DGMM submitted a total of 12,589 Syrian refugees for resettlement to third countries.

In Iraq, 78 cases of 356 persons were referred to MENA Regional Hub for resettlement consideration, 13 cases of 47 persons were accepted for resettlement to the UK and 12 persons departed to the UK. There were no rejected cases in September due to improved screening and scrutiny processes. The UK held a mission to Iraq on identification and assistance of vulnerable persons, interviews, security screening and anti-fraud measures. In the same period the US resettlement mission focused on interviews for UNHCR referred cases as well as in country referrals from their embassy or consulate.

In Egypt, with the increase of children at risk (15% of the total Syrian refugee population up from 3%) quality community-based protection, specialized child protection services, including quality case management, specialized psychosocial support (PSS), recreational activities for children and life skills for adolescents have become vital response tools. These have also taken an increased importance in inter-agency coordination and in the national child protection system. Community-based protection interventions included psycho-social support provided by community-based workers which helped 3,409 girls and boys and parents to address their basic needs and enhance their physical and emotional well-being. During the reporting period, 567 children benefitted from specialized child protection services.

In Jordan, the protection working group began a series of presentations focusing on the conditions of refugees living in various host communities through Jordan, in an attempt to shed greater light on refugee protection concerns for those living outside of Amman and refugee camps seeking to identify gaps and strengthen linkages between Amman and the governorates.

NEEDS ANALYSIS:

With the crisis in the region showing no signs of abatement, the depletion of family savings and the difficulty to find gainful employment is increasing the socio-economic vulnerability among refugees in the region.

With over 4.8 million Syrian refugees already hosted in the region, ensuring continued access to safety and non-refoulement continues to be a regional challenge. Borders remain managed, limiting the ability of many to seek the international protection they need. In 2016, continued armed conflict in Syria contributed to further displacement within the country, leaving some civilian populations trapped and unable to move freely or to access safety outside the country.

As community-based activities aimed at mitigating rights violations and empowering refugees is paramount for short term solutions, information sessions and legal aid becomes critical. Underfunding reduces humanitarian actors' ability to provide counselling and support community-owned initiatives.

Additional opportunities for resettlement and other forms of admission, including humanitarian visas, academic scholarships, and labour mobility schemes, are also needed.



Syrian woman with her children attending an awareness session, UNHCR/

Pedro C. Gomes

Sector Response Summary:



6,435,500 Refugees & Local Community Members targeted for assistance by end of 2016
4,815,290 assisted in 2016



Syrian Refugees in the Region:



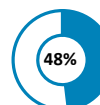
4,740,000 Syrian Refugees expected by end-2016
4,750,300 currently registered



Protection Sector Funding status:



USD 507 million required in 2016
USD 244 million received in 2016



AREA BASED APPROACH IN DELIVERING COMMUNITY PROTECTION IN TURKEY

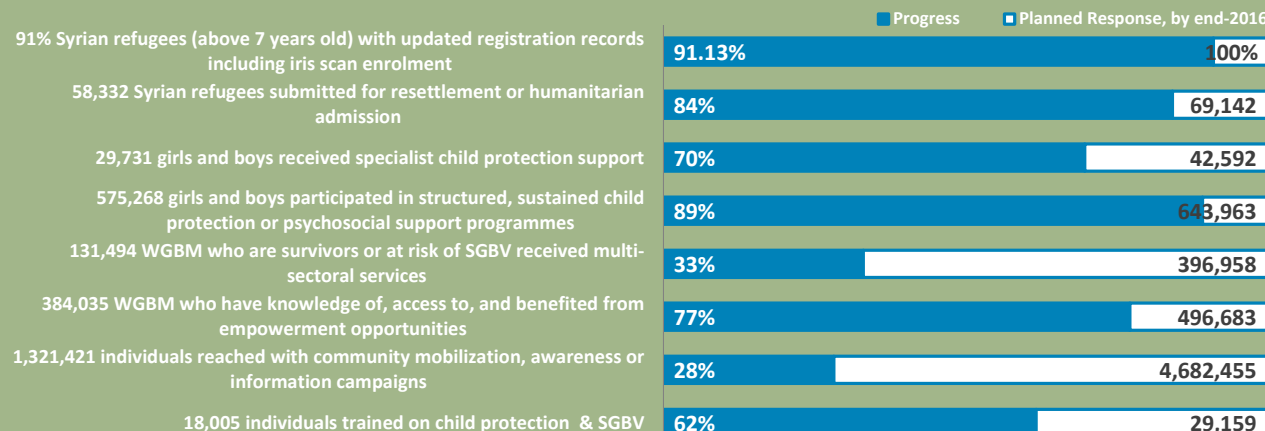
3RP partners continue their efforts to enhance community-based approach to protection in all operations affected by the Syrian crisis. Community entities and members are increasingly engaged as agents of protection.

In Turkey, sector partners including the Government of Turkey has adopted the area-based approach to enhance community-based protection. Mapping of community assets and capacities is on-going in 44 provinces in Turkey. The outcome of this mapping will inform multi-sectoral community-based response in each provinces. Partners are working to create a web site where the information on services that are available to refugees in their respective place of residence can be accessed.

In the first phase, nine provinces are targeted where participatory assessment and consultation with key stakeholders have been undertaken and key protection concerns at the community level have been identified. A group of 95 Refugee Outreach Volunteers (ROVs) are working with different refugee communities in these provinces. Thanks to ROV and sector partners, refugees with protection risks are identified, and information on services are shared to facilitate building of stronger relationships within and between communities. In the second phase, sector partners will reach out refugees in 18 additional provinces to expand CBP interventions.

Since the beginning of this initiative about 2,153 refugees at heightened risk including women, unaccompanied and separated children, and refugees with disabilities have been identified and referred to appropriate service providers in protection, education, health and livelihoods sectors.

REGIONAL RESPONSE INDICATORS: JANUARY - SEPTEMBER 2016



These dashboards reflect the achievements of the more than 200 partners, including governments, UN Agencies, and NGOs, involved in the 3RP response in Egypt, Iraq, Jordan, Lebanon and Turkey. Progress and targets may change in line with data revisions. All data on this Dashboard is current as at 30 September 2016.