



LAKE CHAD BASIN EMERGENCY RESPONSE

CRISIS OVERVIEW

The Lake Chad Basin is facing **one of the largest humanitarian crises** in the world today. Despite numerous alerts raised by the humanitarian community and a concrete **risk of famine**, the crisis remains largely neglected and consistently underfunded compared to others.

Since 2009, an area spanning four countries in Central and West Africa has been impacted by the violence perpetrated by the Nigerian extremist group Boko Haram. In the ensuing years, the insurgency group has turned to violent attacks against the local population, causing an unprecedented crisis involving millions of people living in the affected area. Furthermore, the counter insurgency operations conducted in the

region triggered new waves of displacement deteriorating the humanitarian condition of the affected population.

Today, more than **six million people** are **food insecure**, two million people have fled their homes and are currently living under immensely difficult conditions. Meanwhile, hundreds of thousands remain trapped by the conflict without access to humanitarian assistance. Volatile security conditions continue to impact humanitarian access to those most in need. Additionally difficult terrain, weak infrastructure, limited resources and insufficient coordination in the field further limit the humanitarian capacity to deal with such a **complex crisis**.

COOPI REGIONAL RESPONSE

Since 2014, COOPI has responded to the crisis by way of a **regional operation** covering Niger, Chad, Nigeria and in the near future Cameroon. COOPI's aim is to support the most basic and pressing needs of communities affected by the violence. Despite the challenges presented by the security situation and the remoteness of the area, COOPI is providing a **multi-sectoral** emergency response to the victims of Boko Haram focused on **food security, nutrition, protection and education**.

COOPI has developed an **integrated approach** of intervention covering more than 100,000 of households including host communities, internally displaced and refugee families. COOPI works in coordination with local stakeholders and in partnership with the United Nations system and the NGOs in the ground.

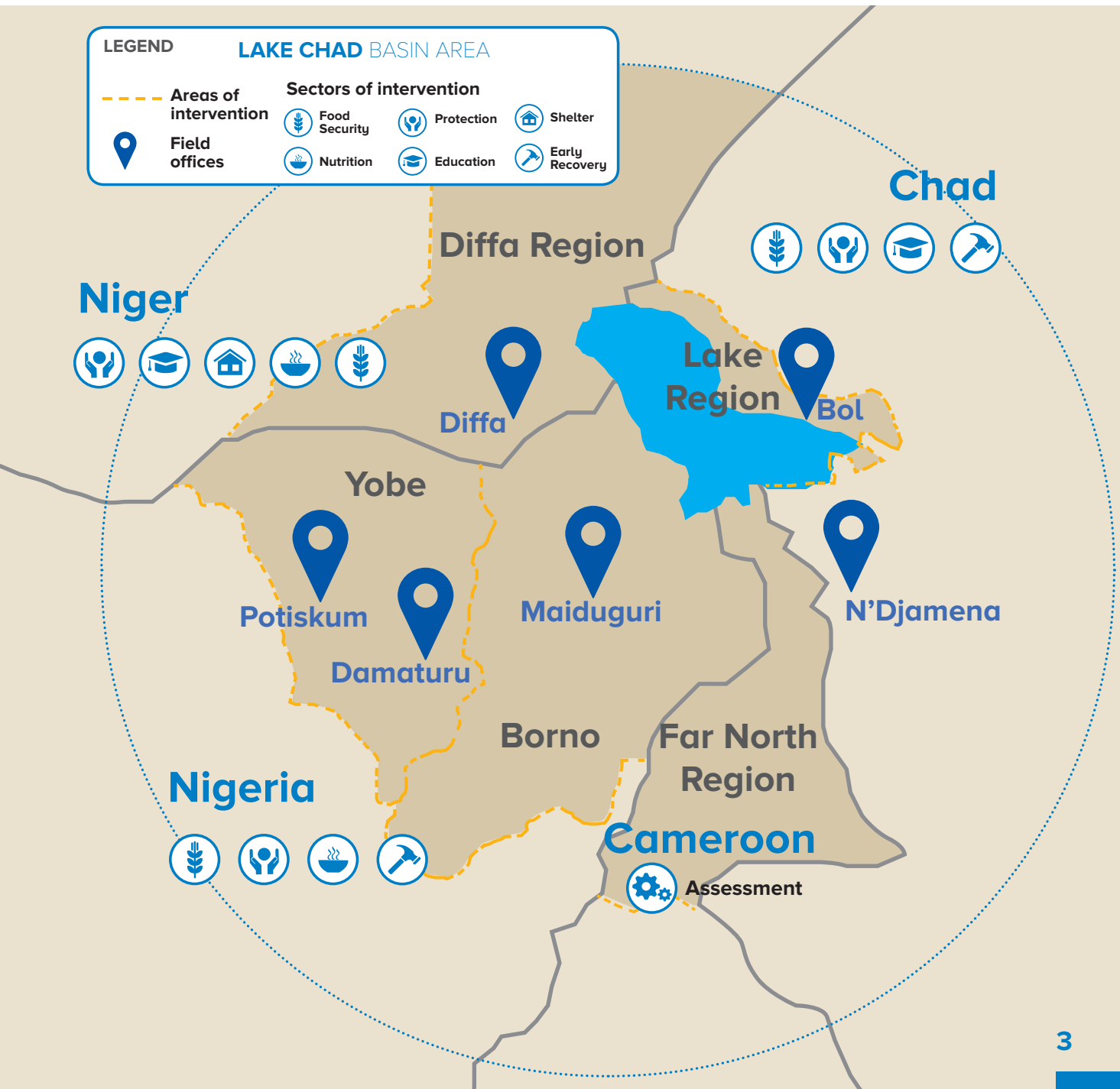
In this challenging context, there is now an urgency to bolster the emergency response before a humanitarian disaster occurs. Regardless of the security challenge, the COOPI team is currently **scaling up its efforts** to come to the aid of those most in need in newly liberated area in **Yobe** and **Borno** (Nigeria), while expanding its presence in **Lake Region** (Chad) and **Diffa Region** (Niger). A new assesment is also ongoing in **Far North region of Cameroon**.

Throughout 2014-15, COOPI set up field offices in the main areas of operation: Potiskum and Damaturu (Yobe State, Nigeria), Diffa (Diffa Region, Niger) and Bol (Lake Region, Chad). Recently the organization has established its presence in **Maiduguri** (Borno State, Nigeria) to ensure effective proximity to the epicenter of the crisis. With the aim to ensure a stronger coordination with the humanitarian

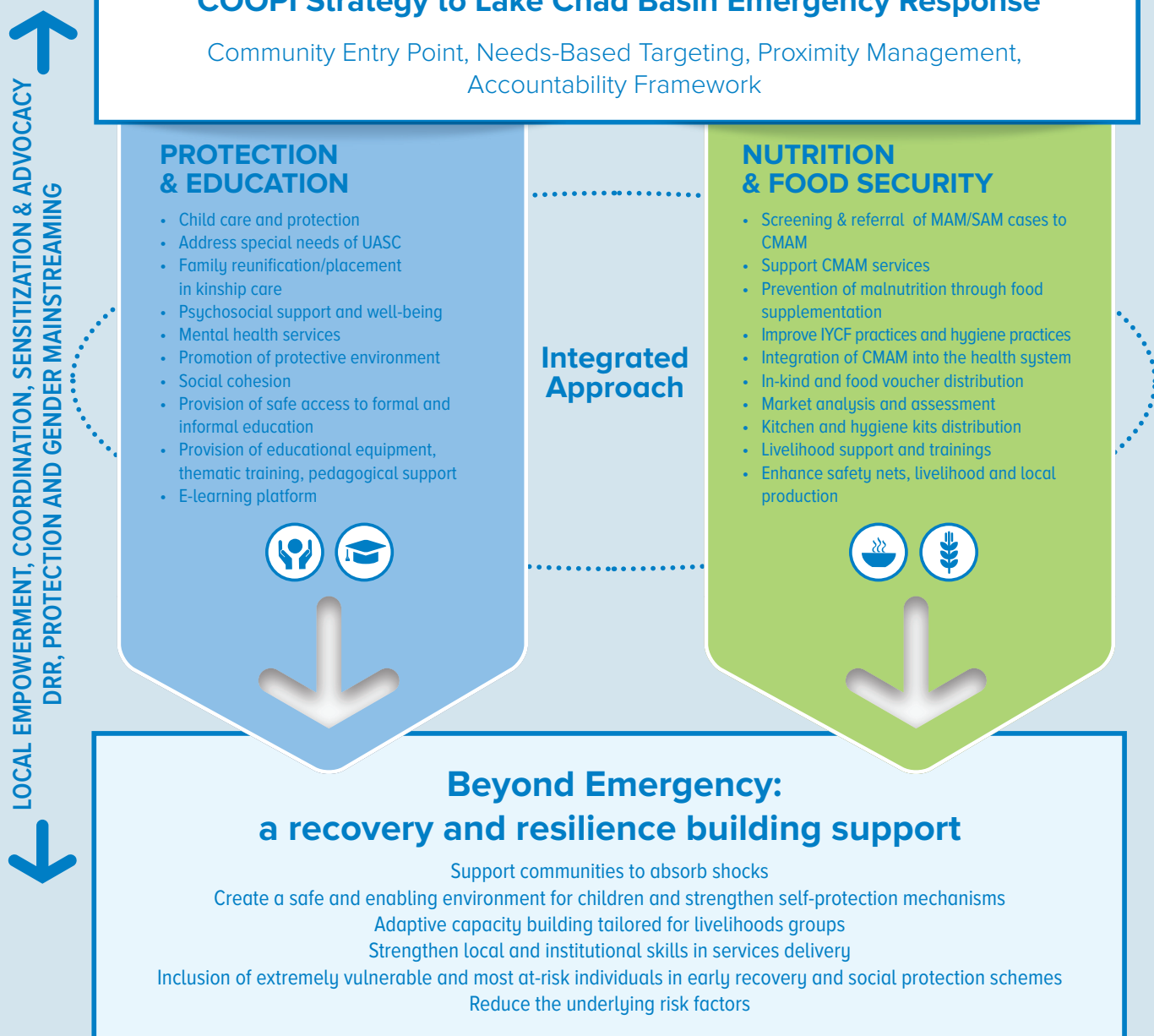
system, COOPI is now setting up a regional office in **Dakar** (Senegal) to support operations in West Africa, now covering six countries.

Among COOPI's main **partners** in the response to the Lake Chad Basin Crisis there are the European Commission Humanitarian Aid Office (ECHO),

UNICEF, UNHCR, the Swiss Cooperation, IOM and other UN agencies. COOPI intends to continue to explore new partnerships in the areas of intervention in order to maximize the reach and the impact of its programs.



METHODOLOGICAL FRAMEWORK



FOCUS ON NIGERIA



Since the declaration of state of emergency in the Nigerian federal States of Borno, Yobe, and Adamawa, the escalation of the Boko Haram insurgency has led to **multiple displacement crises**, with communities fleeing their area of origin to take refuge in camps or host communities. In 2014 there was a substantial increase in violence related to Boko Haram and the counter insurgency operations, consequently creating acute and largely unmet humanitarian needs, as IDPs are cut off from their homes and livelihoods, basic services, kinship and social ties. In September 2014, COOPI began operating in north eastern Nigeria in response to the humanitarian crisis caused by the insurgency, established its operation in **Bauchi** State and later expanded to **Yobe** State considering the heightened presence of IDPs in the LGAs of Fika, Damaturu, Potiskum, Geidam and Yunusari. Recently, COOPI initiated an assessment mission in **Borno** State and establishes a presence in Maiduguri to launch operations in the most affected area of the Lake Chad crisis. COOPI is currently operating in 5 LGAs in Yobe State, reaching about 25,000 individuals among IDPs and host communities with a multi-sectoral intervention covering nutrition, food security and child protection. COOPI has recently developed a **cash & voucher** based response **system** in Nigeria to address the food insecure communities while integrating this approach with a **nutrition component** - community outreach, referral system, IYCF campaign and appropriate therapeutic services addressed to malnourished children and pregnant and breastfeeding women.

Given the unfolding large scale emergency in the north eastern Nigeria, COOPI plans to **scale up** its current operations in Yobe state and reach newly accessible areas, in addition to areas receiving Nigerian returnees from Niger, with its **multi-sectoral services** including food security, cash transfer programming, nutrition and protection. Furthermore, COOPI plans to set-up operations to extend its hu-

manitarian services to affected populations in Borno state, including the capital **Maiduguri** and newly accessible areas in the state, where the most vulnerable populations are stuck with insufficient basic services to respond to their immediate needs in a dignified manner.



Photo: Antonio Piccoli

Expected Results for NE States, Nigeria at the end of 2016:



78,000

People received life-saving food and cash assistance



2,000

Children (UASC) received direct support



8,500

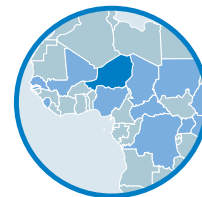
Children under five screened to detect acute malnutrition



22,000

Woman received IYCF messages

FOCUS ON NIGER



Niger is a landlocked, underdeveloped, low income, food deficit country in the Sahara-Sahel belt. Since 2005, Niger has faced major food and nutrition crises and has more recently been affected by the Boko Haram insurgency in Nigeria, which has penetrated the border into the Diffa region, creating several wave of internal displacement and flows of refugees from North Eastern Nigeria. Starting in 2014, COOPI Niger established an operation in the Diffa region to support refugees and displaced people with protection and education services. COOPI has developed an **innovative approach** in protection by the establishment of **child friendly recreational spaces** known as DIAPs, used to carry out socially inclusive psychosocial support activities, individual counseling and recreational activities according to homogeneous groups of children of appropriate age and gender. This program is implemented by a team of **international psychologists**.

To compliment these activities, COOPI is integrating a mental health program into its emergency response and a special assistance program for

boys and girls detained in juvenile prisons on suspicion of involvement with Boko Haram.

On **education in emergency**, COOPI is implementing projects of support to primary and secondary education, providing transitory and permanent spaces at primary and secondary school levels, training teachers and developing an e-Learning platform for refugees according to the Nigerian secondary school curriculum.

In 2017 COOPI Niger will continue to scale its protection activities throughout the Diffa region by opening more child friendly spaces in affected areas while providing **quality mental health support** on a greater scale to children, adults and detained adolescents. COOPI will further expand its educational offerings and support to internally displaced and refugee children. The **shelter and nutrition** interventions will be extended and complimented by a **Disaster Risk Reduction** program in cooperation with Nigerien authorities to improve their emergency response and management capacity.



Photo: Gemma Perez

Expected Results for Diffa Region, Niger at the end of 2016:



24,800

Children enrolled in quality education



84,000

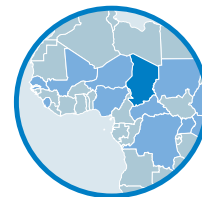
Children received psychosocial support



**2,000
800**

Emergency and
transitional shelters
constructed

FOCUS ON CHAD



Chad is one of the world's least developed countries and continues to face a complex emergency as a result of chronic food insecurity, undernutrition natural hazards and conflict. COOPI has supported drought and conflict affected communities in Chad over the last 25 years, with a focus on development initiatives and humanitarian assistance to most vulnerable communities in several areas of the country such as Logone, Mandou, Moyen Chari, Dar Sila, Hadjer Lamis, and recently Lake Region.

Since 2013, COOPI has operated in the **Lake Region** and in 2015 the organization began providing food security support to vulnerable households in the area of Bol, targeting host and displaced communities with **livelihood support**, cash for work and village saving and loans association (VSLA).

COOPI has also started to intervene in the sector of **education in emergency**, both formal and informal. Main activities include the construction of classes in villages and temporary rooms in sites for IDPs, the provision of kits and materials, teachers' recruitment and training and parents' sensitization. COOPI intervention includes also a **protection program** focused on community outreach, psychosocial support of children and unaccompanied minors and separated children reunification.

COOPI program in the Lake Region is now focused on a multi-sectoral approach integrating emergency services in protection and education with early re-

covery initiatives of livelihood support. COOPI wants to strengthen its presence in the area mainly focusing on Bagasola, Bol, Kangelom and Ngouri Districts. COOPI is also developing complementary programs with other partners involved in the emergency response by a consortium approach.

Expected Results for Lake Region, Chad at the end of 2016:



1,845

Children, including children with disabilities, enrolled in quality education



400

Children received psychosocial support



20

Schools rehabilitated with additional classes and sports facilities



1,500

Families received agricultural support, cash for work and/or livestock support

COOPI WEST AFRICA

COOPI has a **long presence** in West Africa and the Sahel belt. During the 1970s the organization began operations in Sierra Leone, Cameroon and Chad in response to **complex emergencies**, and later expanded to Guinea Bissau, Maroc, Senegal and Ivory Coast. At the heart of COOPI's work there has always been a focus on the **root causes** of food insecurity across the region. Since 2013, the organization has reinforced its presence in West Africa by launching new operations in Mali, Niger and Nigeria in response to the food and nutrition crisis and in support of people fleeing conflicts. COOPI is now developing a **regional strategy** of intervention pursuing an **integrated approach** combining life-saving assistance with recovery initiatives aimed at reinforcing **resilience** of communities affected by conflicts and cyclical droughts. The organization is also dealing with the **migration** crisis in transit and origin countries by providing psychosocial services and educational programs. The operations in West Africa are now supported by a **regional office** based in Dakar.

COOPI AROUND THE WORLD

COOPI - Cooperazione Internazionale

is a humanitarian organization, nonreligious and independent, that works for a world without poverty. It assists populations in need and contributes to the development of local communities.

It is currently present in **24 countries** in the Global South with **179 projects**, **100 expatriates** and **3,000 local workers**.

The 2015 financial report totaled around 36 million Euro, 94% of which was employed in the interventions in the Global South and 6% to fund the organization.

The funds come mainly from institutional donors, above all from the European Commission. The financial statement is certified by an audit company.

From 1965 to 2015, COOPI has **helped 100 million people** in 63 countries and employed 4,500 expatriates and 55,000 local workers in 1,600 projects.



COOPI - COOPERAZIONE INTERNAZIONALE NGO

HEADQUARTERS

VIA F. DE LEMENE 50
20151 MILANO - ITALIA
PH: +39 02 30 85 057 r.a.
FAX: +39 02 33 40 35 70
COOPI@COOPI.ORG

COOPI NIGERIA

PLOT 882 OLU
AWOTESU STREET
JABI ABUJA
PH: +234 08129088019
HOM.NIGERIA@COOPI.ORG

COOPI SENEGAL AND WEST AFRICA

DAKAR, AVENUE BIRAG DIOP,
RUE 5XF, POINT E
B.P. 11561
COOPI.WESTAFRICA@COOPI.ORG

COOPI CHAD

QUARTIER AMRIKEBE,
5EME ARRONDISSEMENT,
RUE 6240 N. 723 BP 1900 NDJAMENA
PH: +235 66201402
CM.TCHAD@COOPI.ORG

COOPI NIGER

QUARTIER ORTN, RUE OR 30
NIAMEY NIGER B.P. 11501
B.P. 11501 NIAMEY
PH: +227 97 75 55 70
CM.NIGER@COOPI.ORG

COOPI CAMEROON

CM.CAMEROUN@COOPI.ORG

WWW.COOPI.ORG