



**UNHCR**  
The UN  
Refugee Agency



# SYRIA IDP OPERATIONS 2016

Produced By UNHCR Syria Reporting Unit

[syrdareporting@unhcr.org](mailto:syrdareporting@unhcr.org)

Valid as of 17/10/2016



# CORE RELIEF ITEMS (CRIs) IN 2016

CRI Dispatch in 2016, amounts to **2,021,799** individuals

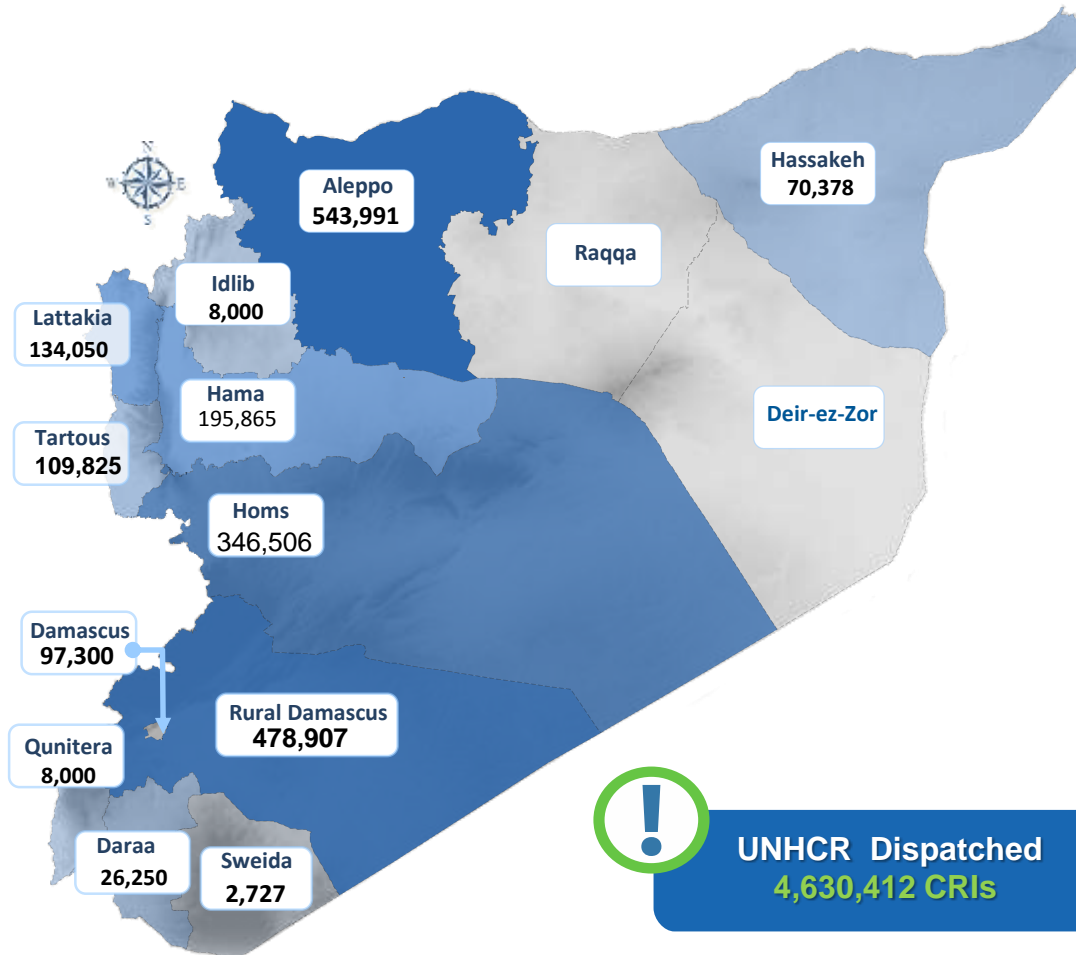
## 2,021,799 Beneficiaries of CRI by location

### Distribution Methodology :

CRIs are distributed in accordance with the needs assessed by UNHCR staff and by implementing partners on the ground.

In areas where everything is needed families receive a CRI Family Kit. The composition of which is:

CRI Family Kit	
3 Mattresses	5 Blankets
3 Sleeping mats	2 Jerry can
Diapers	Sanitary napkins
1 Kitchen Set	1 Hygiene Kit
1 Plastic Sheet	
<b>Winter:</b> 1 extra plastic sheet +1 family winter clothing kit	
<b>Supplementary Items:</b> (Targeting Those Most in Need) Solar Lamps, Sleeping Bags, Winter Jackets, Thermal Underwear	



**2,021,799 Beneficiaries**

Valid as of 17/10/2016

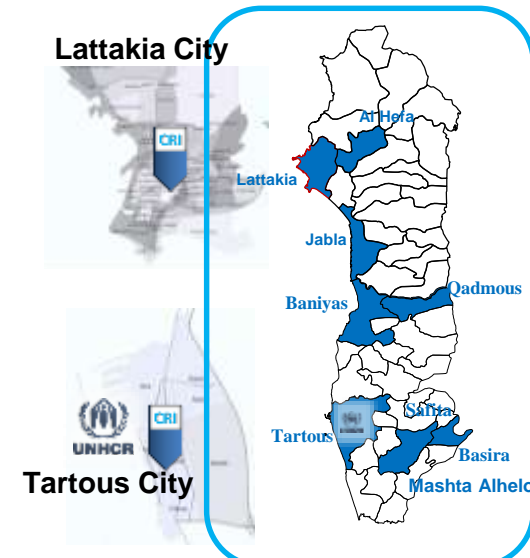
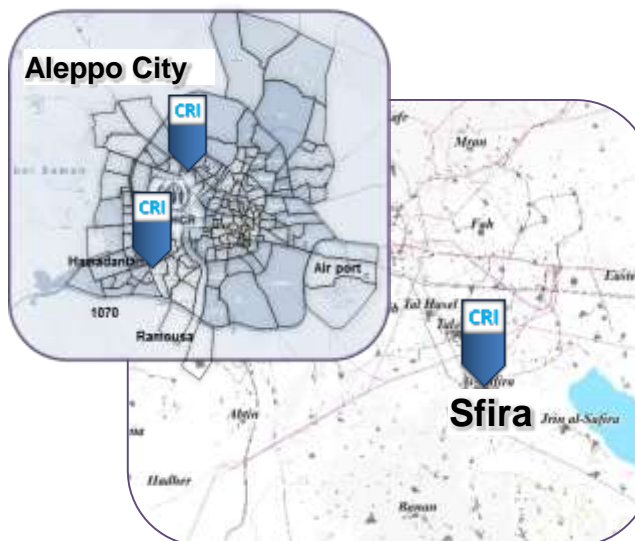
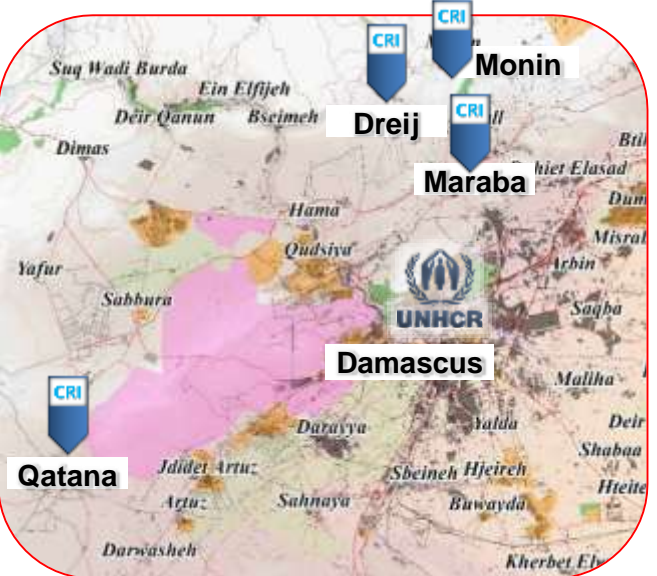
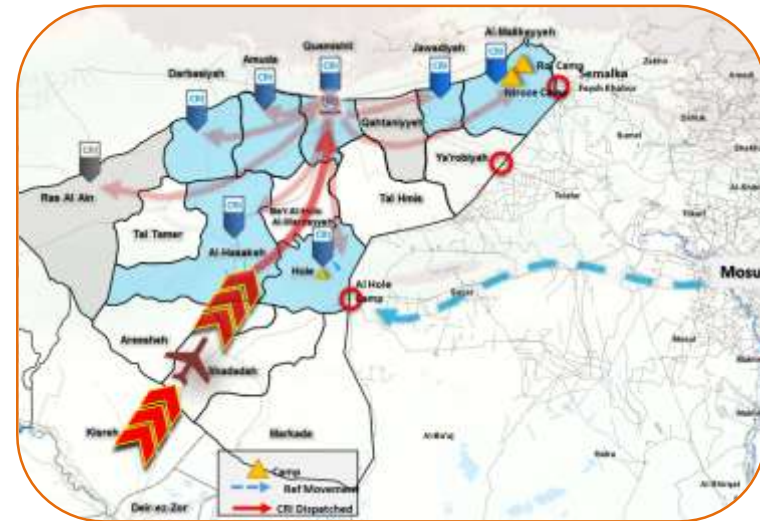
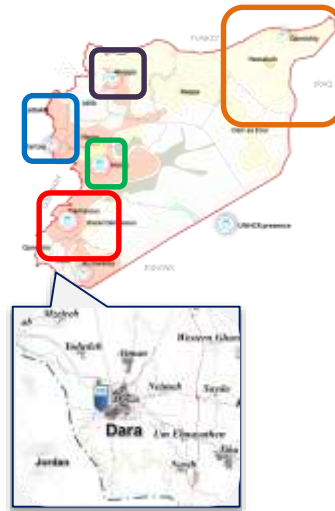


# CORE RELIEF ITEMS (CRIs) IN 2016

Main Locations reached with CRIs between 11 Oct– 17 Oct 2016



**UNHCR**  
The UN  
Refugee Agency





# CORE RELIEF ITEMS (CRIs) IN 2016

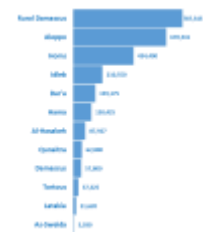
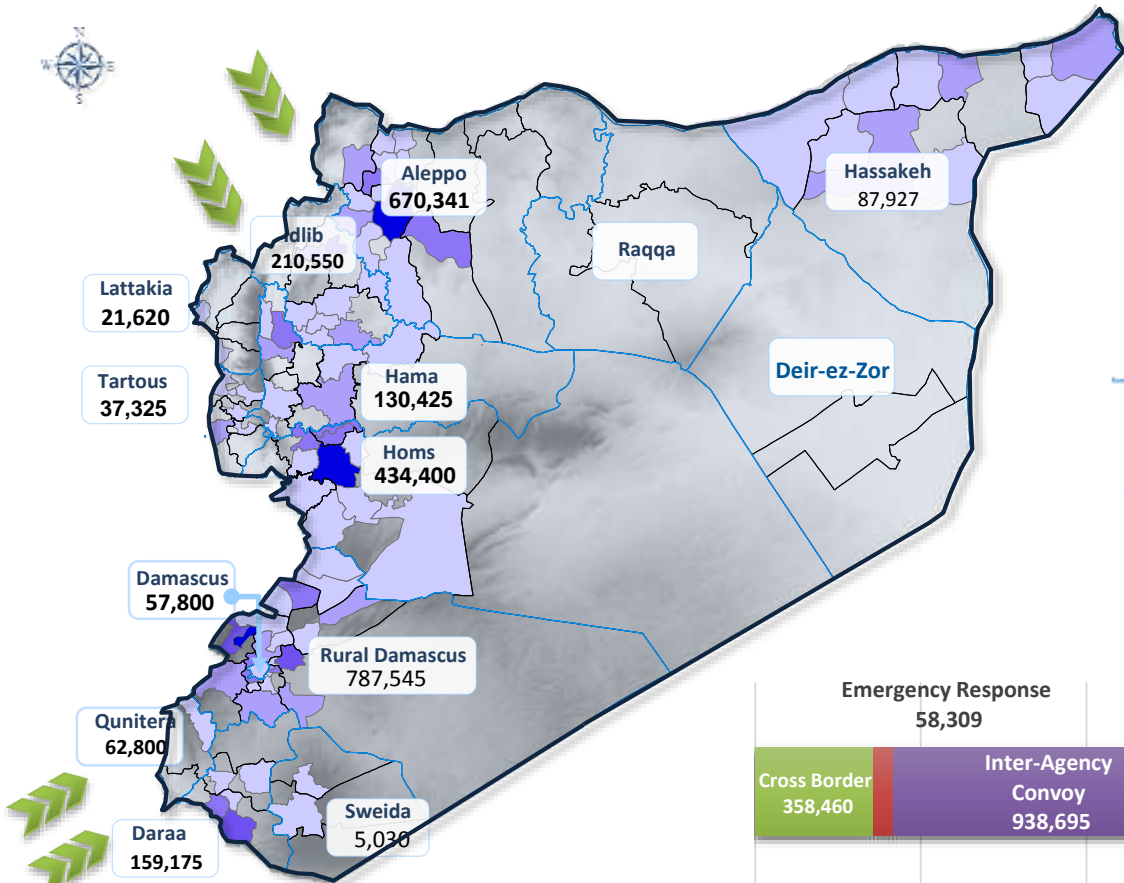
UNHCR Jan – Sep 2016

CRI Distribution in 2016, amounts to **2,664,938** individuals

## 2,664,938 Beneficiaries of CRI by location



Row Labels	BSG	HTR	Grand Total
Aleppo		67,040	67,040
Al-Hasakeh		35,506	35,506
Dar'a		10,825	10,825
Hama		32,000	32,000 </td
Homs	77,665	265,380	343,045
Idleb	65,800	2,500	68,300
Rural Damascus	285,650	158,280	443,930
<b>Grand Total</b>	<b>429,115</b>	<b>571,531</b>	<b>1,000,646</b>



Gov	Cross Border Beneficiaries
Aleppo	<b>39,250</b>
Dar'a	<b>137,170</b>
Idleb	<b>144,500</b>
Quneitra	<b>37,540</b>
<b>Grand Total</b>	<b>358,460</b>



Locations approximate. For graphical representation only. Not for detailed planning. Boundaries and locations shown do not imply official acceptance by the United Nations



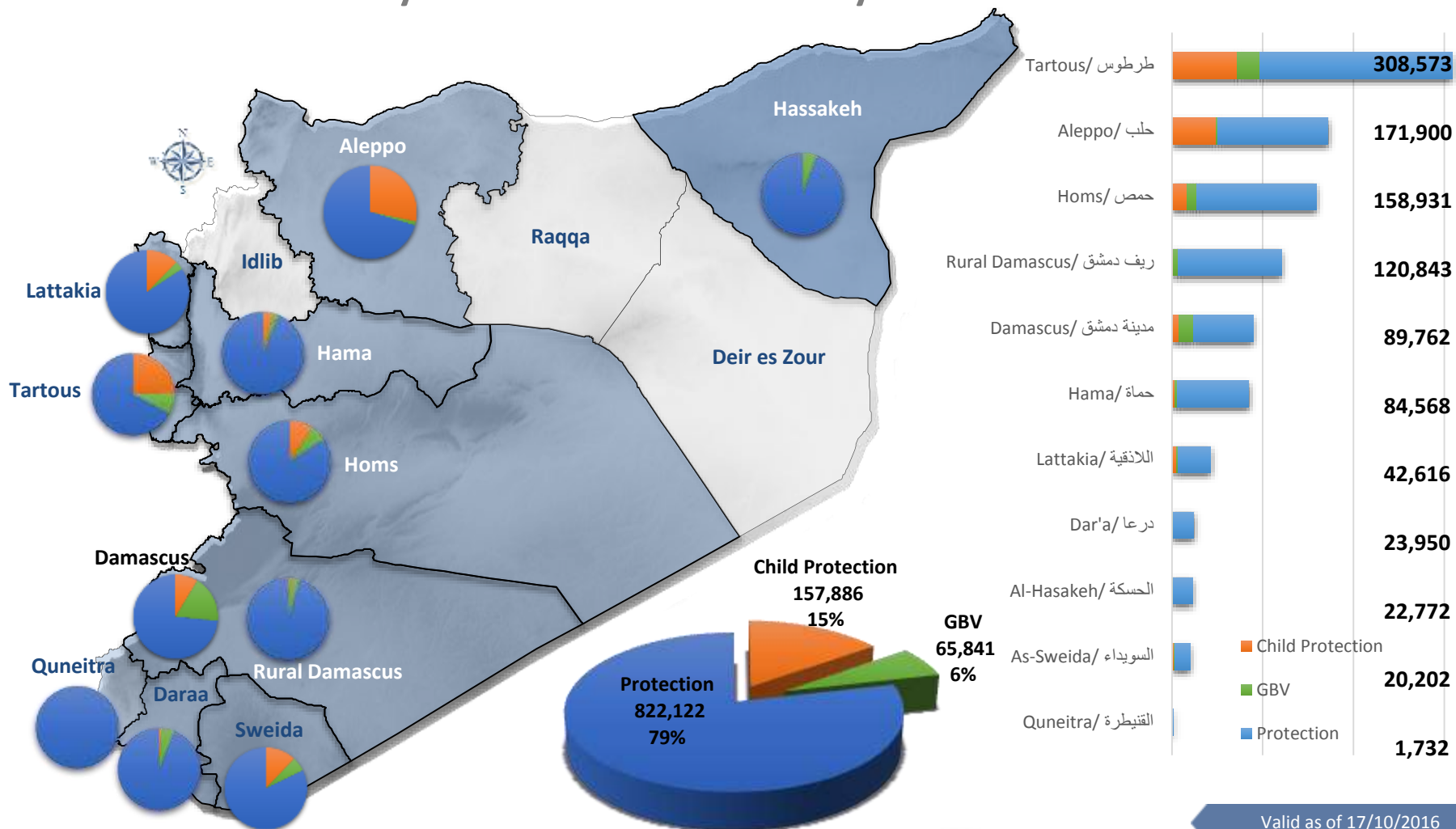
**UNHCR Distributed**  
**3,561,027 CRIs**



# PROTECTION IN 2016

## 1,045,849 Beneficiaries

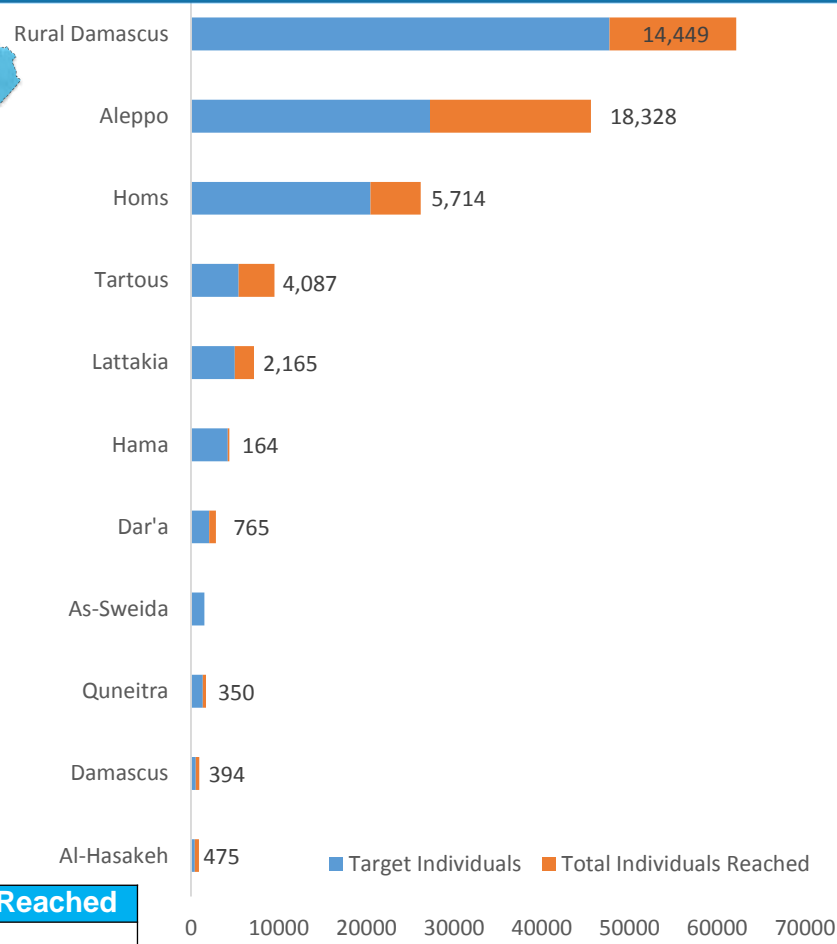
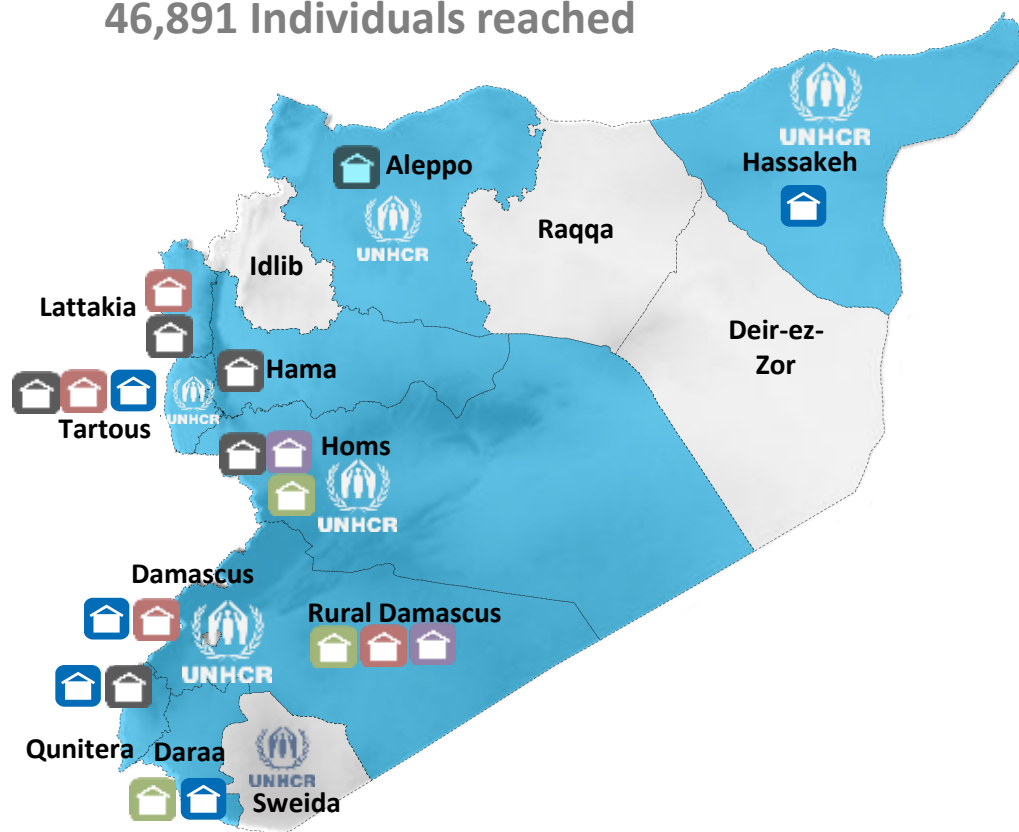
### Reached by Protection & Community Services Interventions





# SHELTER ACTIVITIES IN 2016

46,891 Individuals reached



Activity	Target Individuals	Total Individuals Reached
Collective Shelter Rehabilitation	6,638	1,395
Upgrade Collective Shelters	5,796	4,066
Owner-Oriented Shelter Support	11,485	4,539
Private Shelter upgrade	29,929	14,699
Support to O&M unites	9,660	3,864
Provision Shelter Kits	52,608	18,328
<b>Grand Total</b>	<b>116,116</b>	<b>46,891</b>

Ongoing and completed Activities

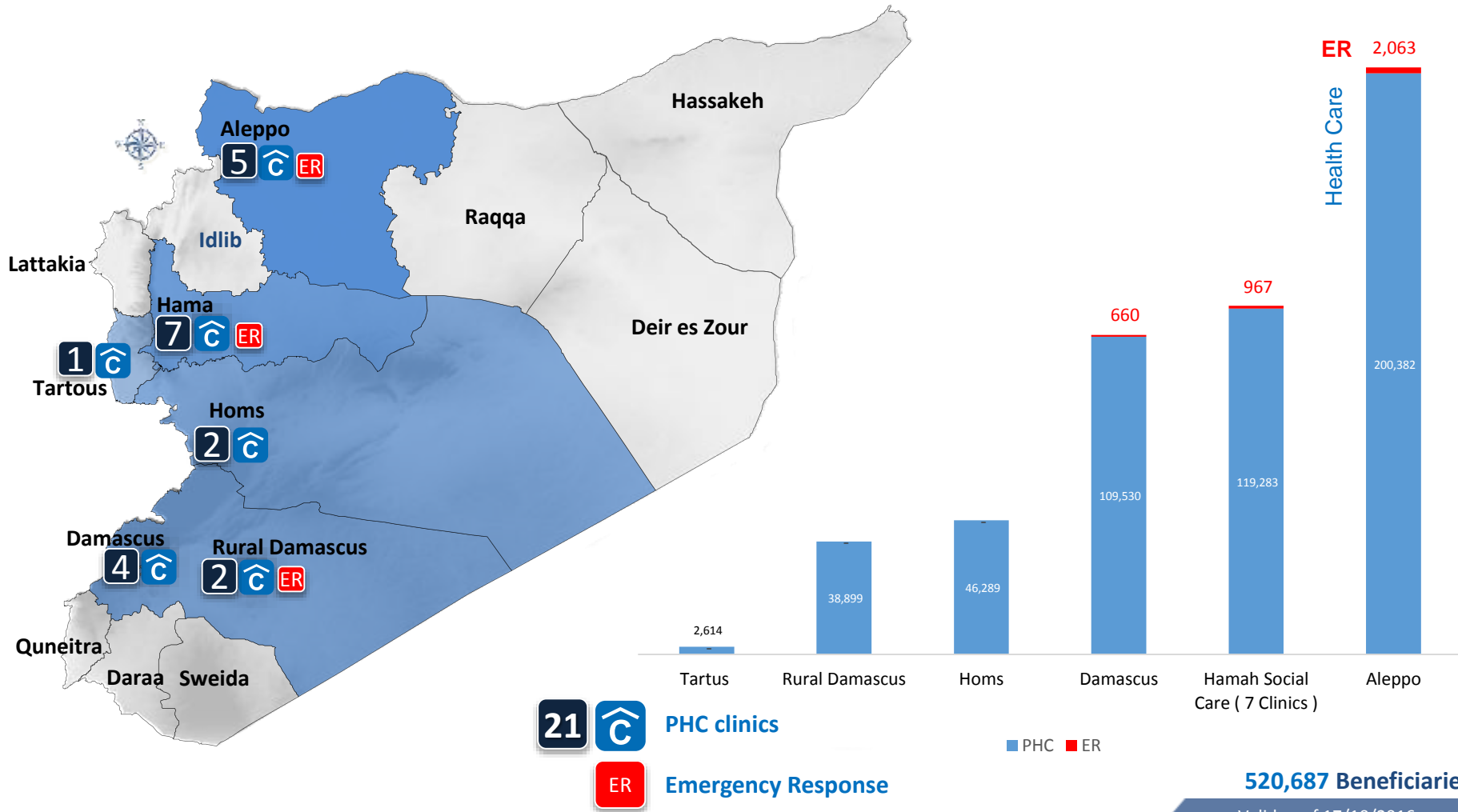
**46,891 Individuals**

Valid as of 17/10/2016



# HEALTH IN 2016

## 520,687 Beneficiaries Have access to Health Care



Al-Nabek Clinic (rural Damascus) & Alzahra Clinic in Homs were handed over to IMC.

520,687 Beneficiaries

Valid as of 17/10/2016