



**UNHCR**  
The UN  
Refugee Agency



# SYRIA IDP OPERATIONS 2016

Produced By UNHCR Syria Reporting Unit

[syrdareporting@unhcr.org](mailto:syrdareporting@unhcr.org)

Valid as of 01/11/2016



# CORE RELIEF ITEMS (CRIs) IN 2016

CRI Dispatch in 2016, amounts to **2,138,597** individuals

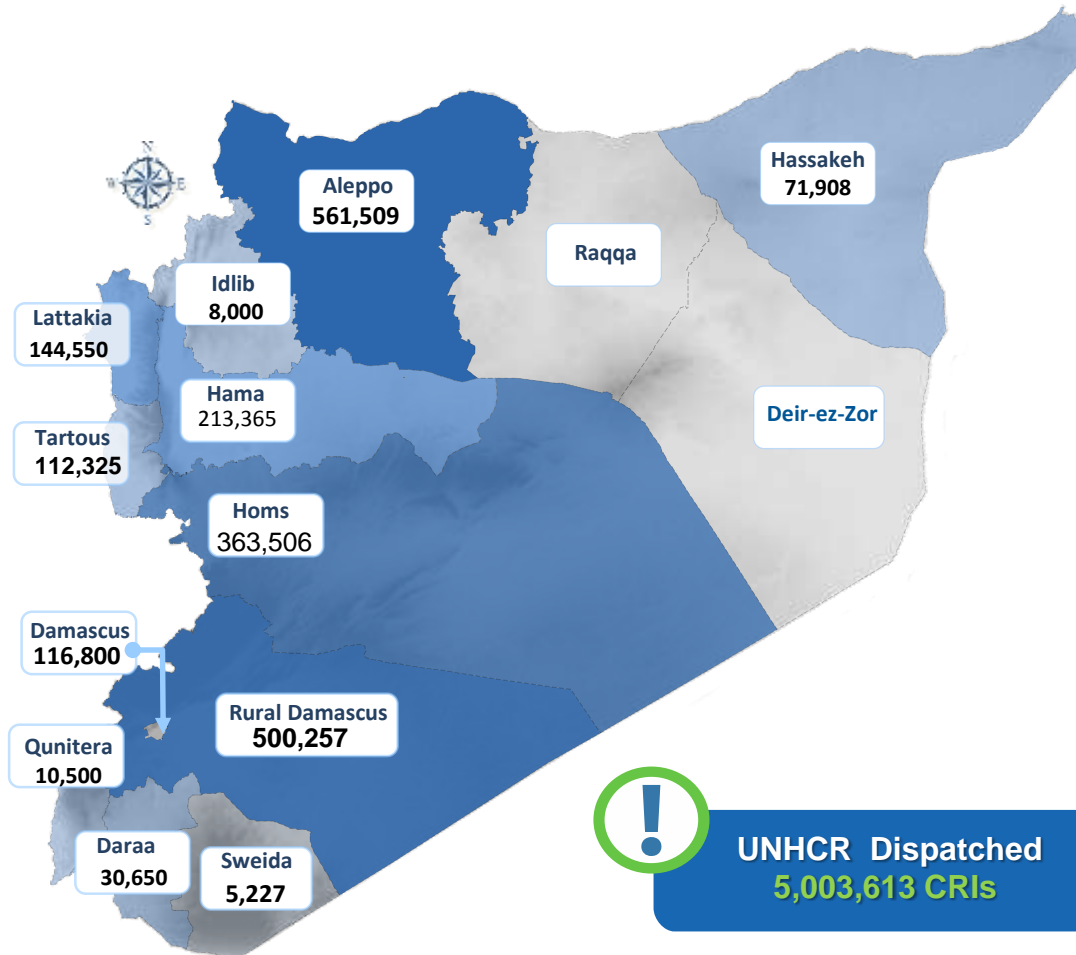
## 2,138,597 Beneficiaries of CRI by location

### Distribution Methodology :

CRIs are distributed in accordance with the needs assessed by UNHCR staff and by implementing partners on the ground.

In areas where everything is needed families receive a CRI Family Kit. The composition of which is:

CRI Family Kit	
3 Mattresses	5 Blankets
3 Sleeping mats	2 Jerry can
Diapers	Sanitary napkins
1 Kitchen Set	1 Hygiene Kit
1 Plastic Sheet	
<b>Winter:</b> 1 extra plastic sheet +1 family winter clothing kit	
<b>Supplementary Items:</b> (Targeting Those Most in Need) Solar Lamps, Sleeping Bags, Winter Jackets, Thermal Underwear	

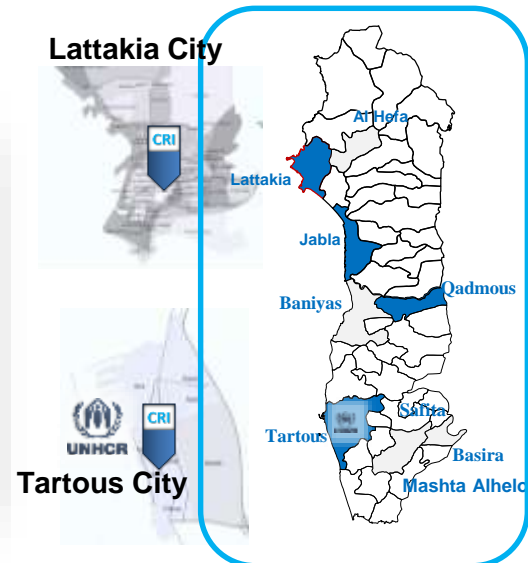
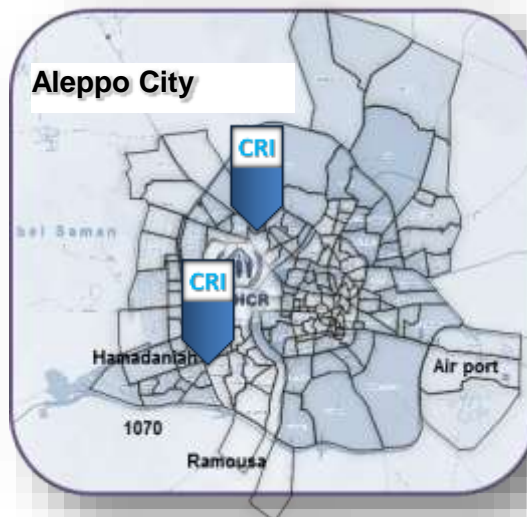
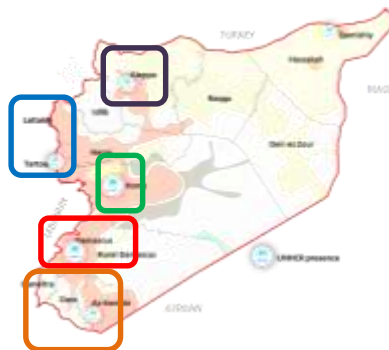
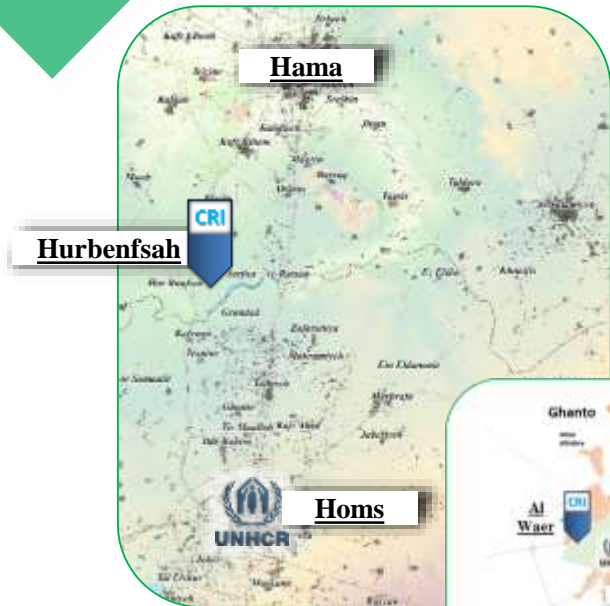


**2,138,597 Beneficiaries**

Valid as of 01/11/2016

# CORE RELIEF ITEMS (CRIs) IN 2016

## Main Locations reached with CRIs between 26 Oct– 1<sup>st</sup> Nov 2016





# CORE RELIEF ITEMS (CRIs) IN 2016

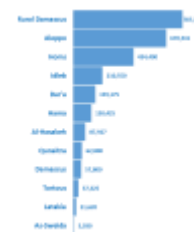
UNHCR Jan – Sep 2016

CRI Distribution in 2016, amounts to **2,664,938** individuals

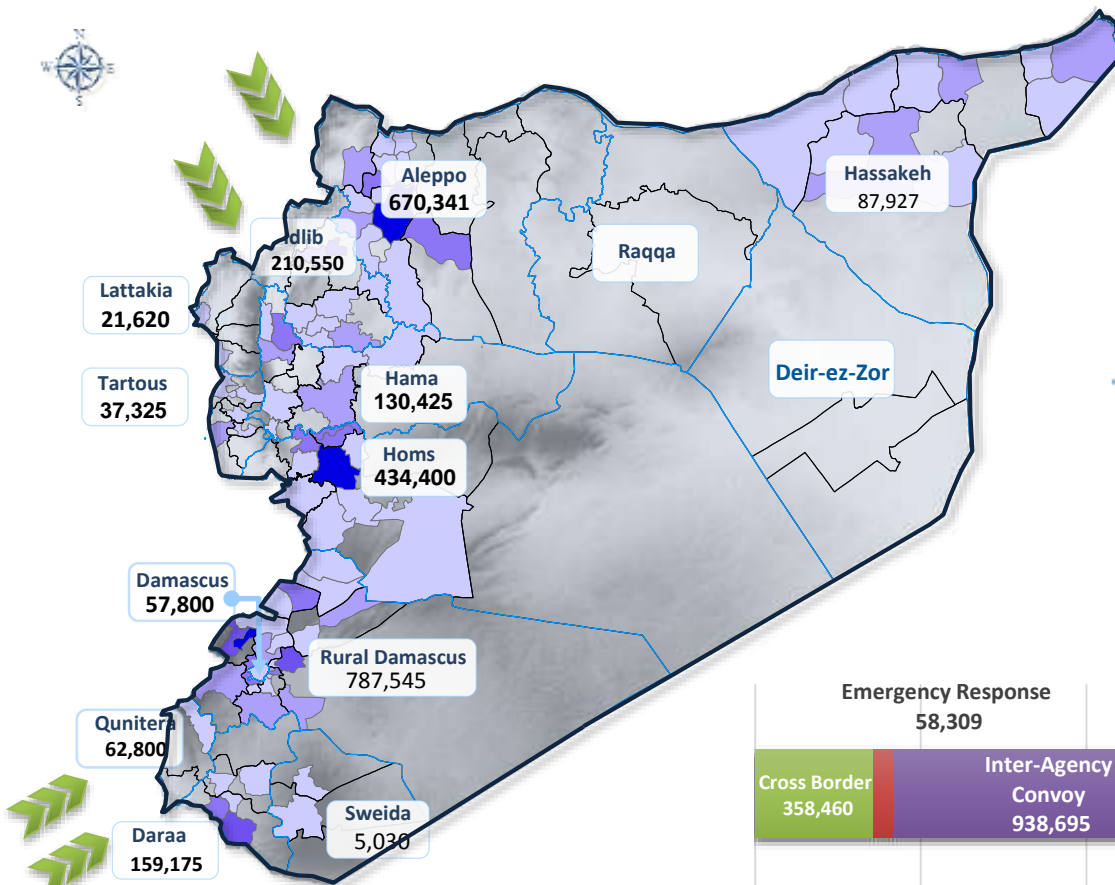
## 2,664,938 Beneficiaries of CRI by location



Row Labels	BSG	HTR	Grand Total
Aleppo		67,040	67,040
Al-Hasakeh		35,506	35,506
Dar'a		10,825	10,825
Hama		32,000	32,000
Homs	77,665	265,380	343,045
Idleb	65,800	2,500	68,300
Rural Damascus	285,650	158,280	443,930
<b>Grand Total</b>	<b>429,115</b>	<b>571,531</b>	<b>1,000,646</b>



Gov	Cross Border Beneficiaries
Aleppo	<b>39,250</b>
Dar'a	<b>137,170</b>
Idleb	<b>144,500</b>
Quneitra	<b>37,540</b>
<b>Grand Total</b>	<b>358,460</b>



Locations approximate. For graphical representation only. Not for detailed planning. Boundaries and locations shown do not imply official acceptance by the United Nations



**UNHCR Distributed**  
**3,561,027 CRIs**

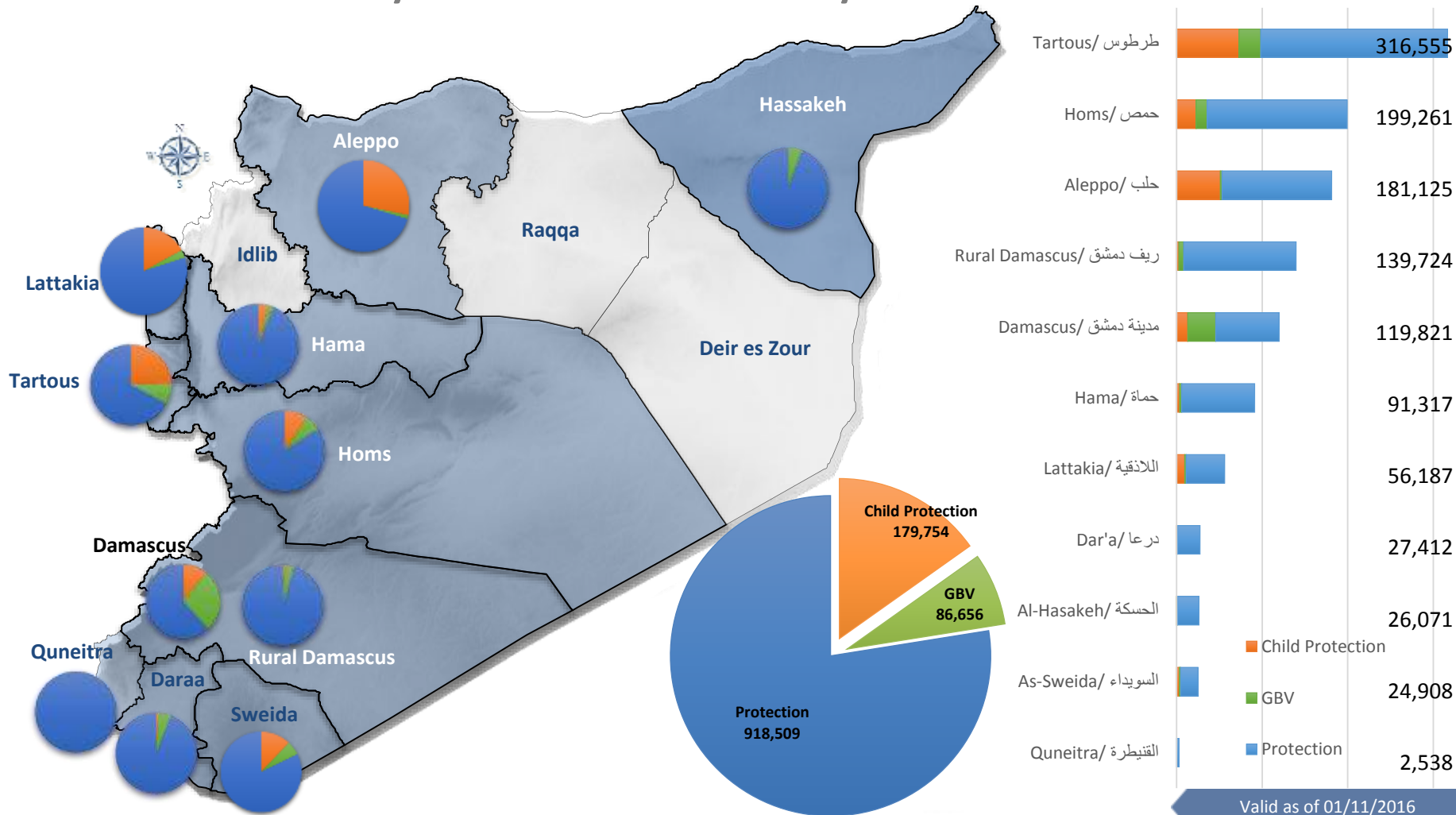


# PROTECTION IN 2016



## 1,184,919 Beneficiaries

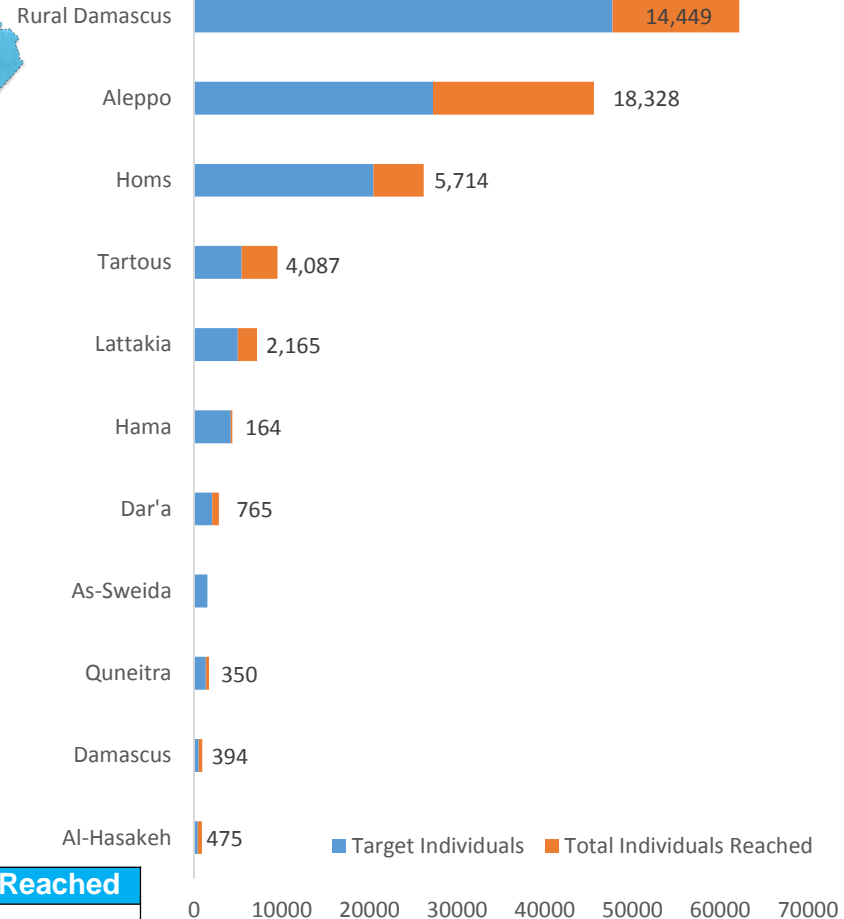
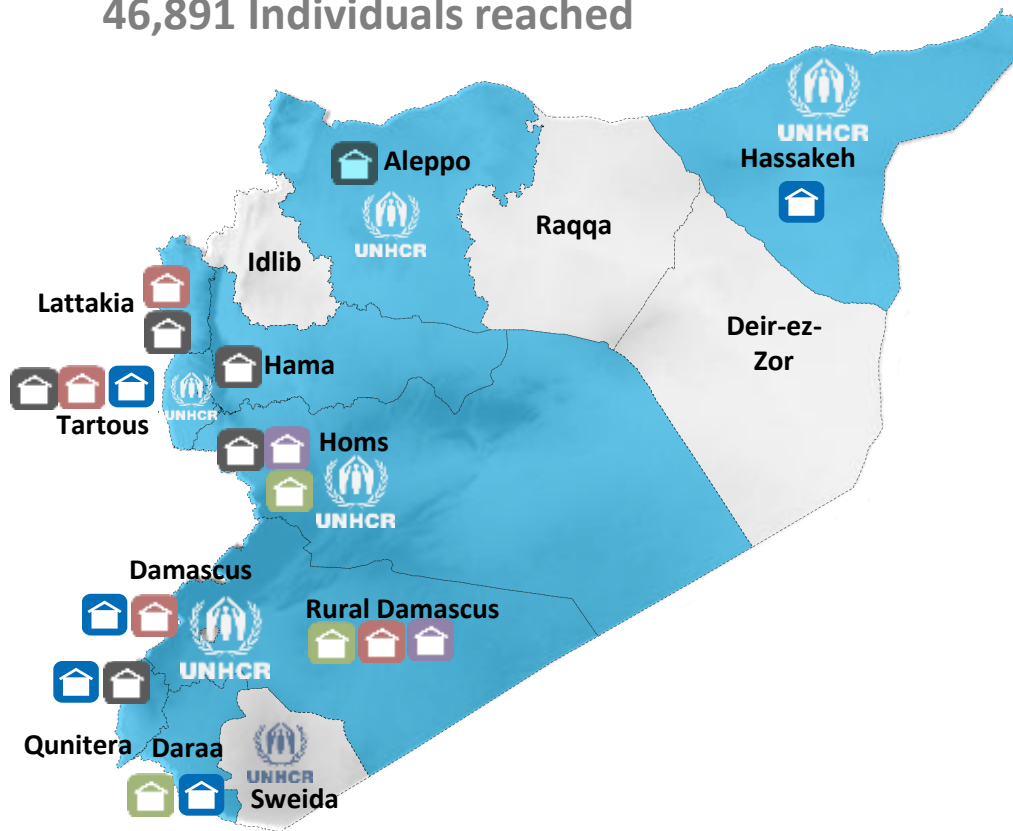
### Reached by Protection & Community Services Interventions





# UNHCR SHELTER Activities 2016

46,891 Individuals reached



Activity	Target Individuals	Total Individuals Reached
Collective Shelter Rehabilitation	6,638	1,395
Upgrade Collective Shelters	5,796	4,066
Owner-Oriented Shelter Support	11,485	4,539
Private Shelter upgrade	29,929	14,699
Support to O&M unites	9,660	3,864
Provision Shelter Kits	52,608	18,328
<b>Grand Total</b>	<b>116,116</b>	<b>46,891</b>

Ongoing and completed Activities

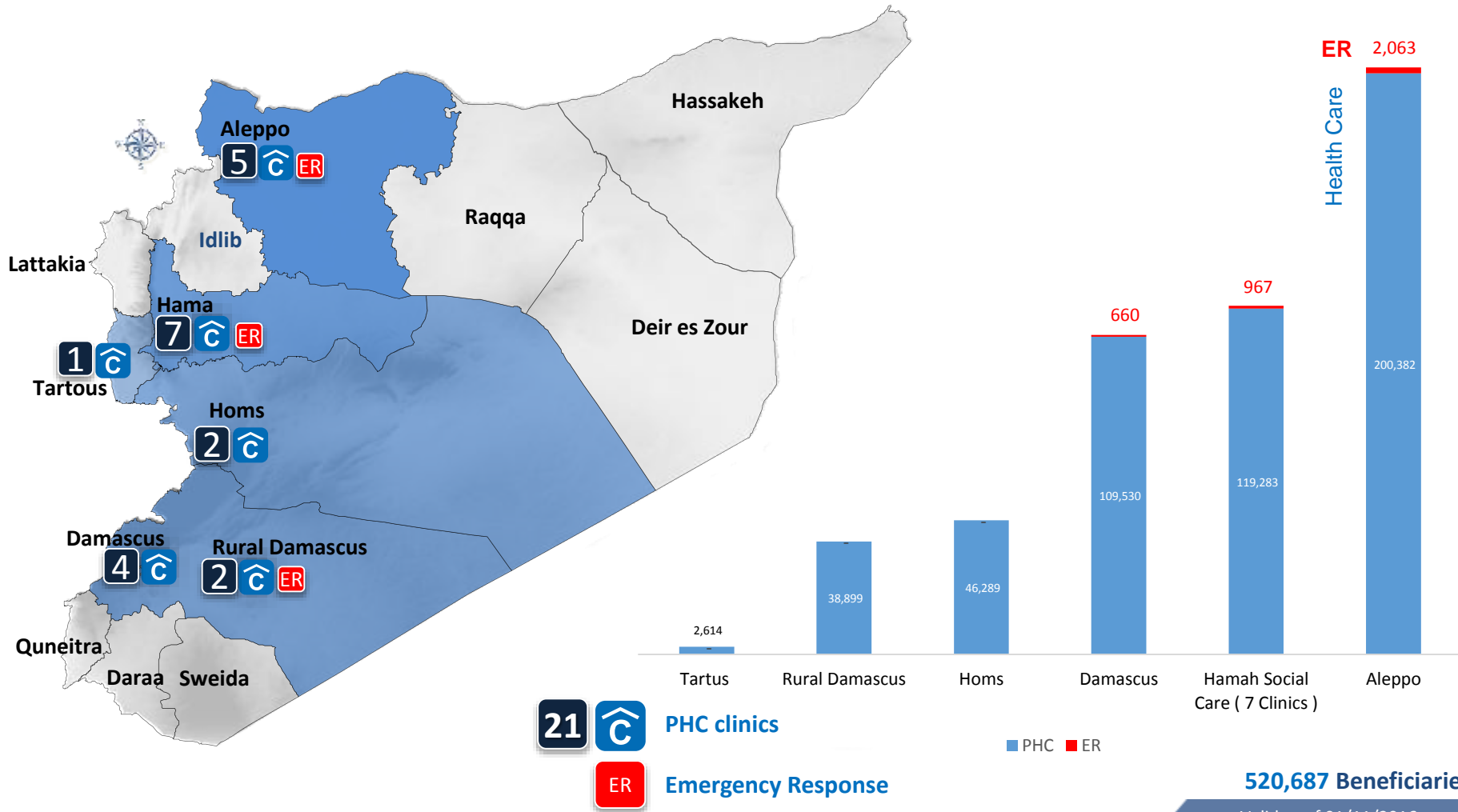
46,891 Individuals

Valid as of 01/11/2016



# HEALTH IN 2016

## 520,687 Beneficiaries Have access to Health Care



520,687 Beneficiaries

Valid as of 01/11/2016

Al-Nabek Clinic (rural Damascus) & Alzahra Clinic in Homs were handed over to IMC.

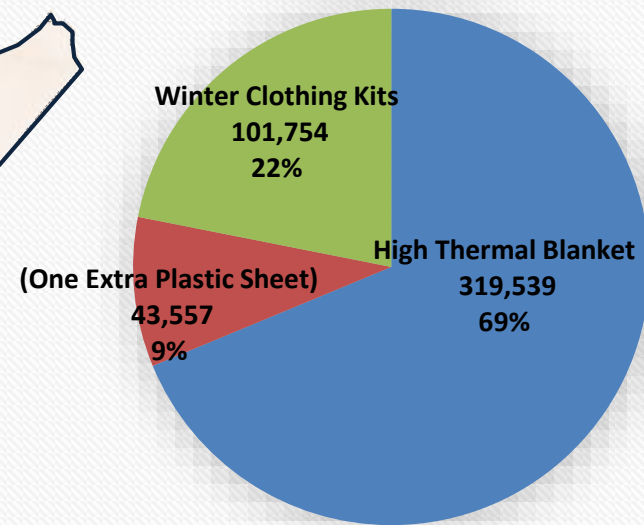
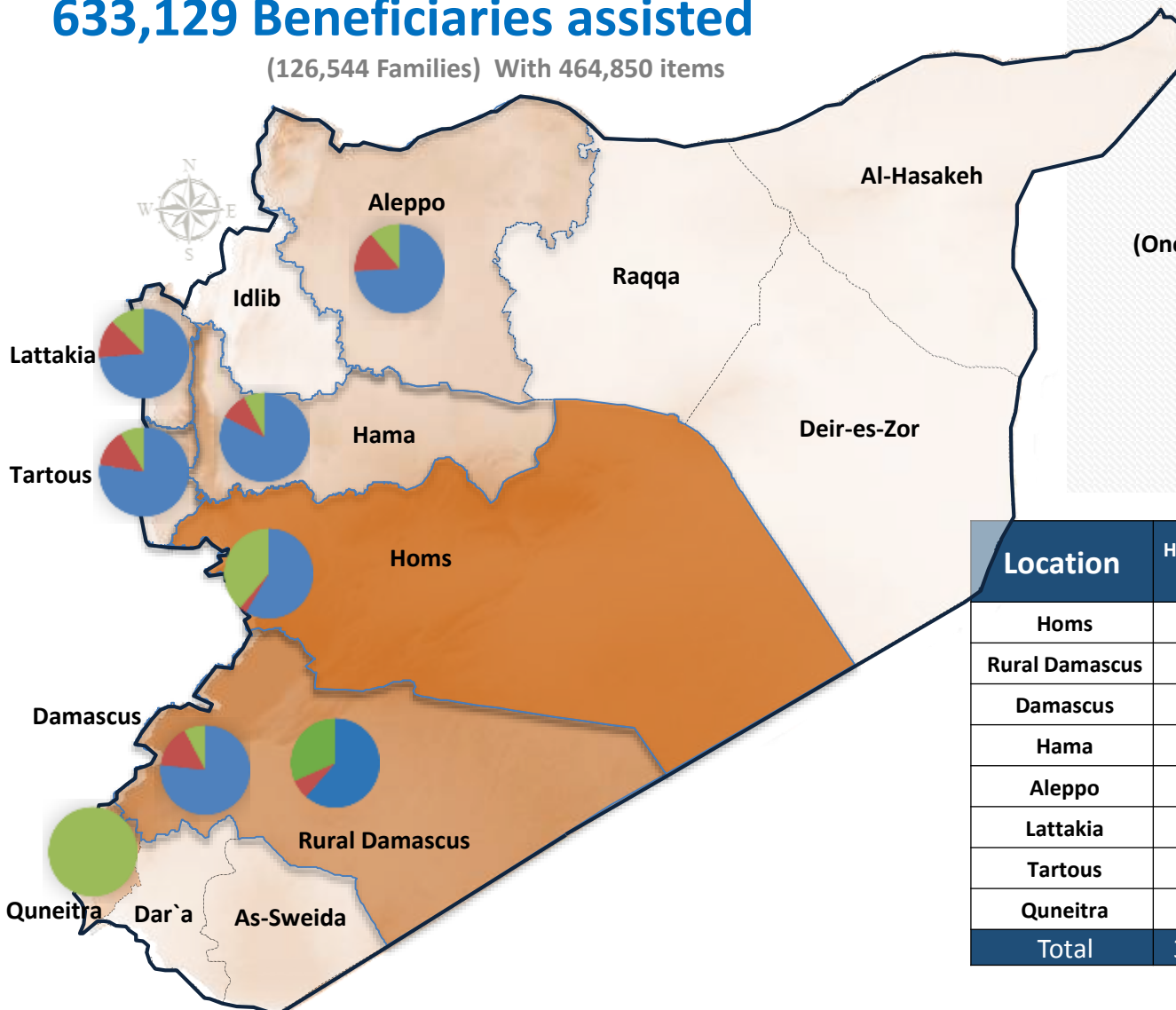


# WINTERIZATION PROGRAMME 2016



## 633,129 Beneficiaries assisted

(126,544 Families) With 464,850 items



Location	High Thermal Blanket	One Extra Plastic Sheet	Winter Clothing Kits	Assisted beneficiaries: (Individuals)
Homs	68,981	3,059	45,811	241,755
Rural Damascus	67,250	7,620	34,590	182,950
Damascus	90,000	18,000	9,000	90,000
Hama	41,775	4,975	3,838	49,275
Aleppo	25,774	5,153	3,837	38,324
Lattakia	14,144	2,702	2,383	14,085
Tartous	11,615	2,048	1,295	11,740
Quneitra			1,000	5,000
<b>Total</b>	<b>319,539</b>	<b>43,557</b>	<b>101,754</b>	<b>633,129</b>