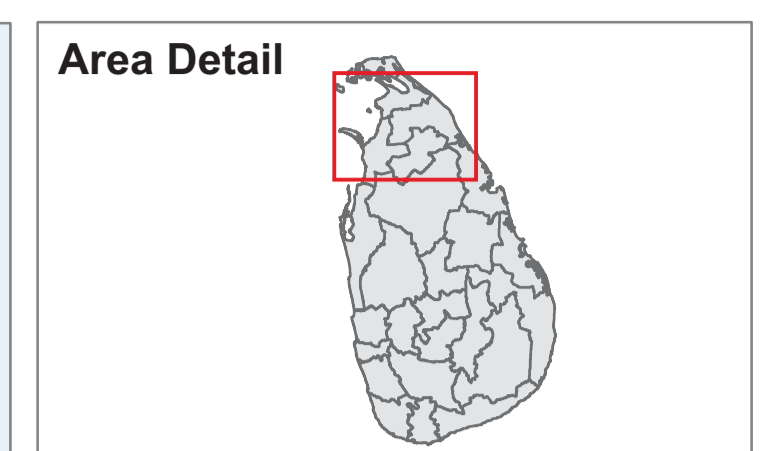
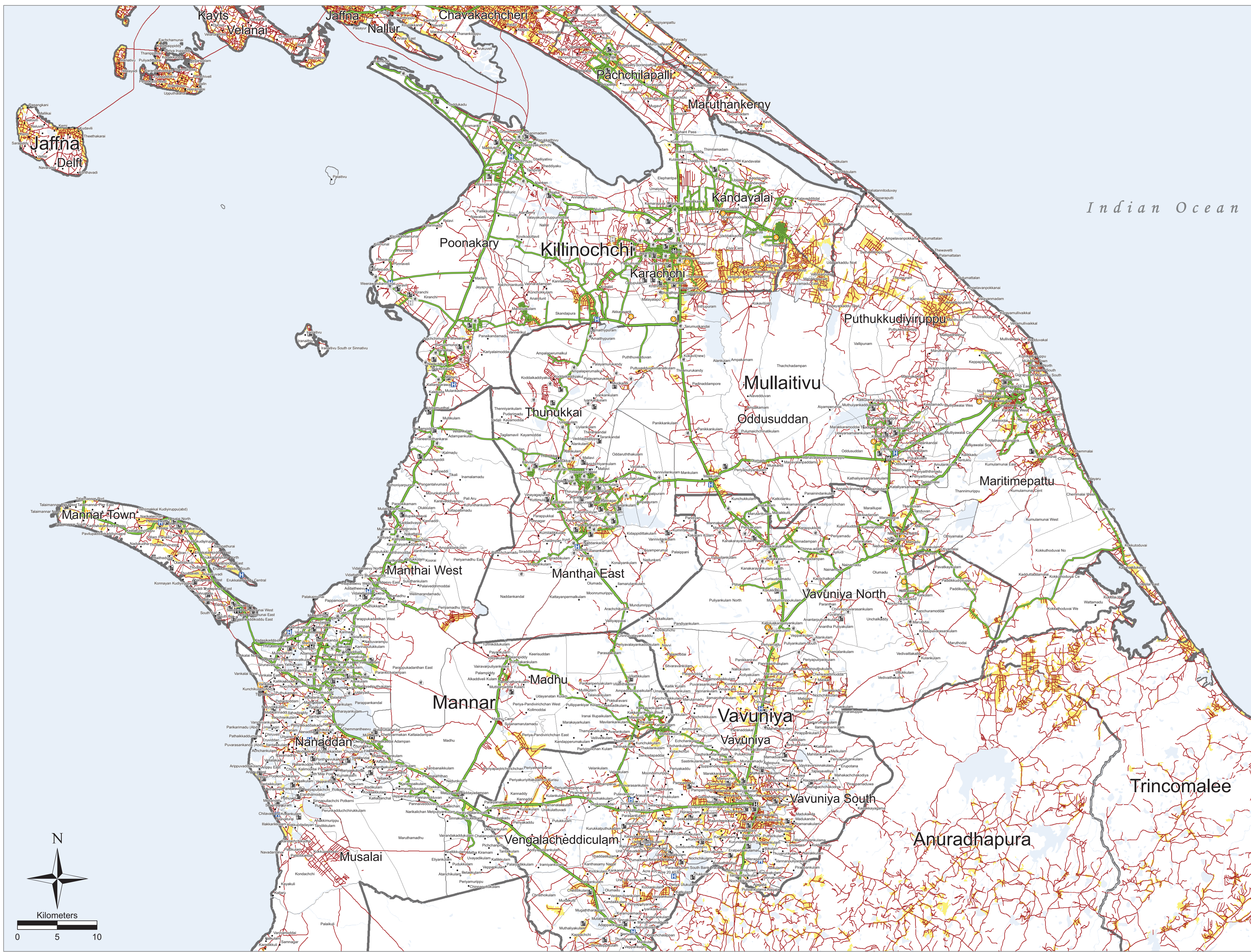


UNDSS Approved Road with Reopened Schools, MPCs, Transit Centres, Health Facilities

as of 03 May 2010

Province: Northern



Legend

- Village Points
- GN Division Boundary
- Residential Area
- Tanks / Water hole
- MPCS
- Reopened School
- Temple
- Church
- Transit Centre
- Base Hospital Type B
- District Hospital
- Divisional Hospital
- Health Center
- MOH office
- Main Road
- Minor Road
- Track Road
- Main Access Road

Data source(s):

Resettlement Data : GA Vavuniya, GA Killinochchi, GA Mullaitivu, GA Mannar

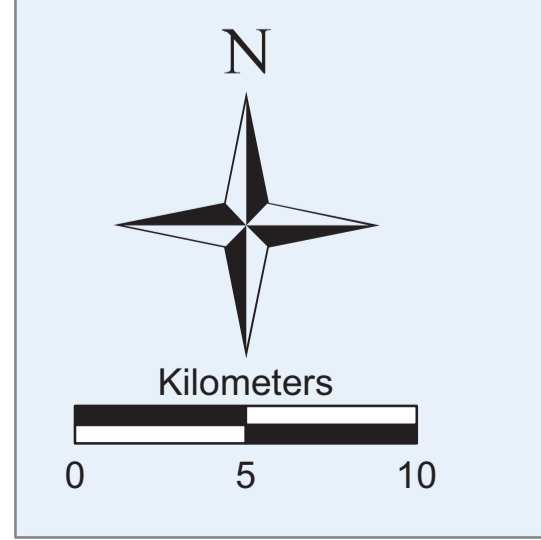
Locations Data : UNDP Mine Action Vavuniya, UNDP Mine Action Jaffna, UNHCR Vavuniya, IOM Vavuniya, UNDSS Vavuniya

Updated as at:	06-May-2010
Produced on:	06-May-2010
Projection / Datum	Transverse Mercator
Admin boundaries provided by:	Survey Department, Government of Sri Lanka
MapNumber:	OCHALK/Vav/Resettlement/01/V4

This map is designed for printing on A1 size
The boundaries, names and the designations used on this map do not imply official endorsement or acceptance by the United Nations.

© 2010 United Nations Office for the Coordination of Humanitarian Affairs, Sri Lanka
20, Temple Road, Kurumankadu Vavuniya.
Tel: +94 (24) 2224873, 4922044, 4924742.
Fax: +94 (24) 4924742. Email: ocha.vavuniya@gmail.com.
Websites: www.hpsl.lk, http://ochaonline.un.org/srilanka

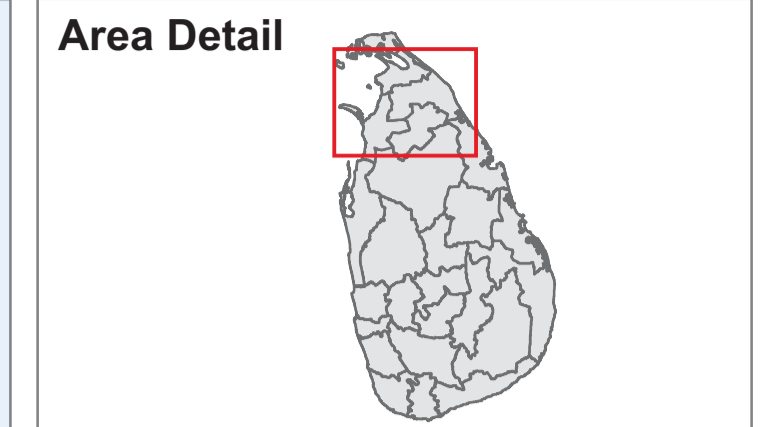
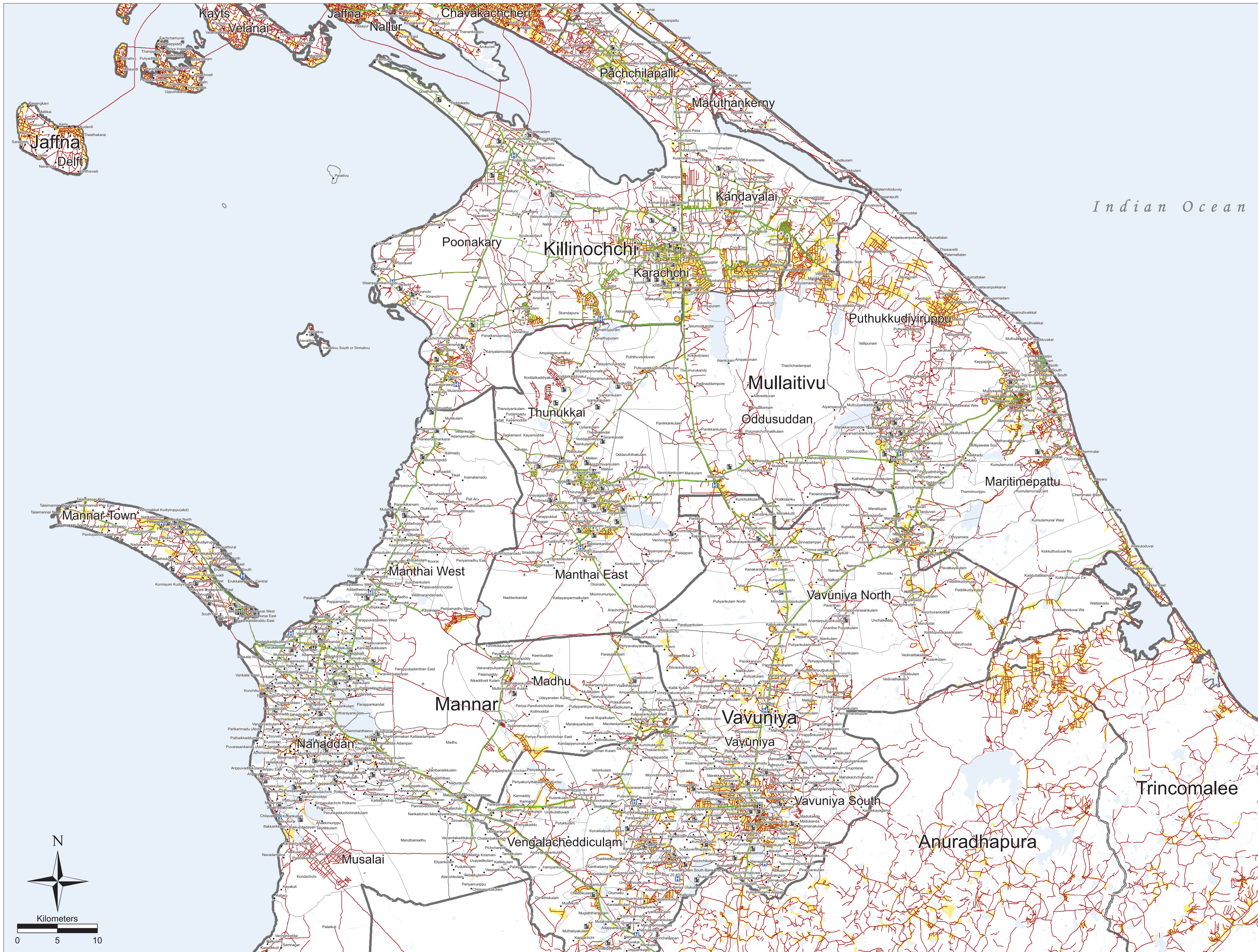
Produced through the generous support of:



UNDSS Approved Road with Reopened Schools, MPCs, Transit Centres, Health Facilities

as of 26 May 2010

Province: Northern



Legend

- Village Points
- GN Division Boundary
- Residential Area
- Tanks / Water hole
- MPCs
- Reopened School
- Temple
- Church
- Transit Centre
- Base Hospital Type B
- District Hospital
- Divisional Hospital
- Health Center
- MOH office
- Main Road
- Minor Road
- Track Road
- Main Access Road

Data source(s):
Resettlement Data : GA Vavuniya, GA Killinochchi, GA Mullaitivu, GA Mannar
Locations Data : UNDP Mine Action Vavuniya, UNDP Mine Action Jaffna, UNHCR Vavuniya, IOM Vavuniya, UNDSS Vavuniya

Updated as at:	2-Jun-2010
Produced on:	2-Jun-2010
Projection / Datum	Transverse Mercator
Admin boundaries provided by:	Survey Department, Government of Sri Lanka
MapNumber:	OCHALK/Vav/Resettlement/01/V6

This map is designed for printing on A1 size. The boundaries, names and the designations used on this map do not imply official endorsement or acceptance by the United Nations.

© 2010 United Nations Office for the Coordination of Humanitarian Affairs, Sri Lanka #20, Temple Road, Kurumankadu Vavuniya. Tel: +94 (24) 2224873, 4922044, 4924742. Fax: +94 (24) 4924742. Email: ocha.vavuniya@gmail.com. Websites: www.hpsl.lk, http://ochaonline.un.org/srilanka

Produced through the generous support of:

