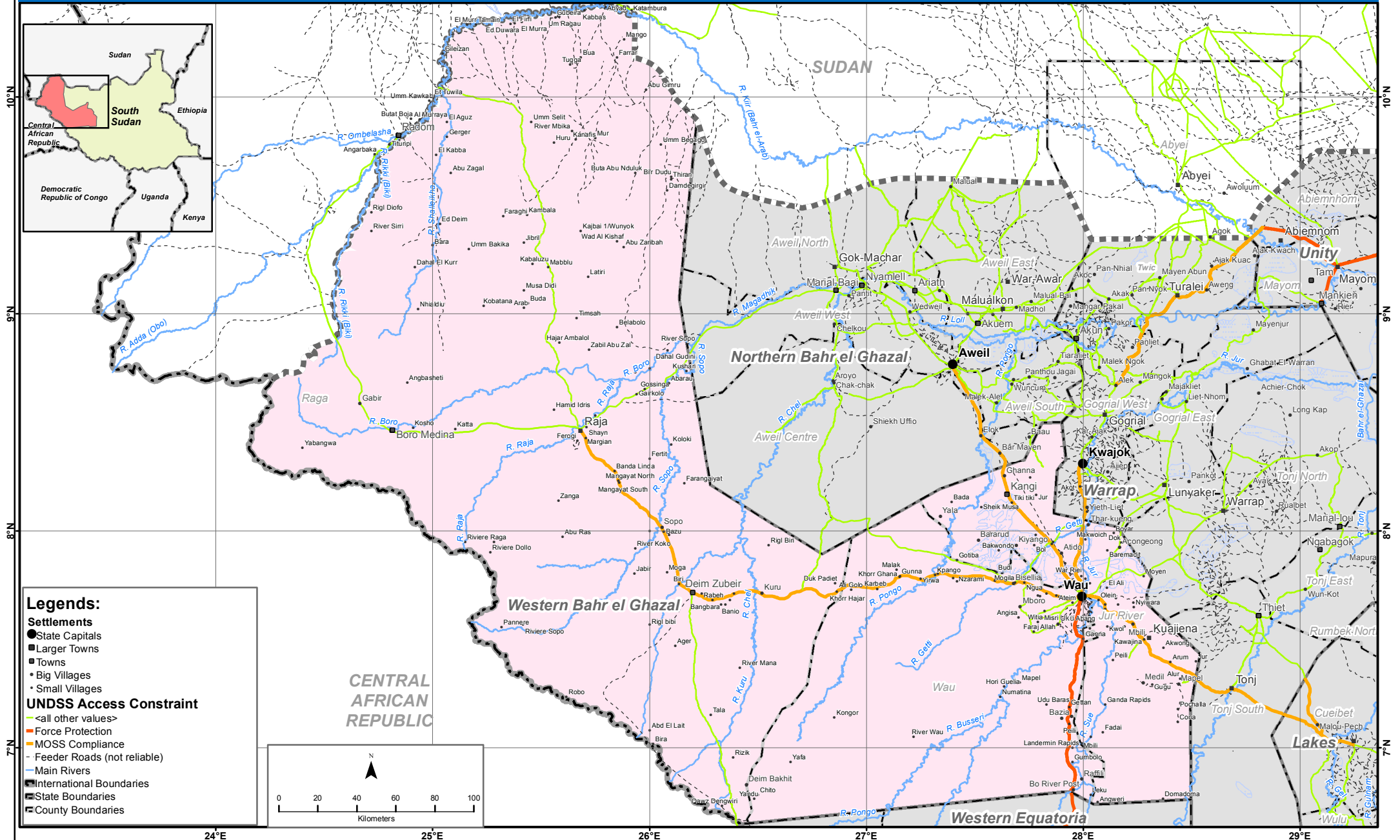


# Western Bahr el Ghazal State Map (as of Dec 2016)



**Legends:**

**Settlements**

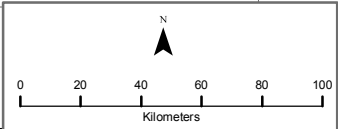
- State Capitals
- Larger Towns
- Towns
- Big Villages
- Small Villages

**UNSSS Access Constraint**

- <all other values>
- Force Protection
- MOSS Compliance
- Feeder Roads (not reliable)
- Main Rivers

**Boundaries**

- International Boundaries
- State Boundaries
- County Boundaries



Creation Date: 12 December 2016 Feedback: [imusouth@un.org](mailto:imusouth@un.org) [www.unocha.org/south-sudan](http://www.unocha.org/south-sudan) \*Final boundary between the Republic of Sudan and the Republic of South Sudan has not yet been determined. \*\*Final status of Abyei region is not yet determined. The boundaries and names shown and the designations used on this map do not imply official endorsement or acceptance by the United Nations.