

HIGHLIGHTS:

Mahama Refugee Camp - One Year On: 22 April 2016 marked one year since Mahama camp opened—in which it has already become the largest refugee camp in Rwanda. Home to nearly 50,000 Burundian refugees, Mahama has surpassed the five other camps in this small country. Mahama is already bigger than the two largest Congolese camps—Kiziba hosting 17,300 and Kigeme home to 19,000—combined. Watch this short film to see how Mahama camp has transformed in just one year: <https://www.youtube.com/watch?v=y5krDpP-I4Q>



April marked one year since Mahama first opened.

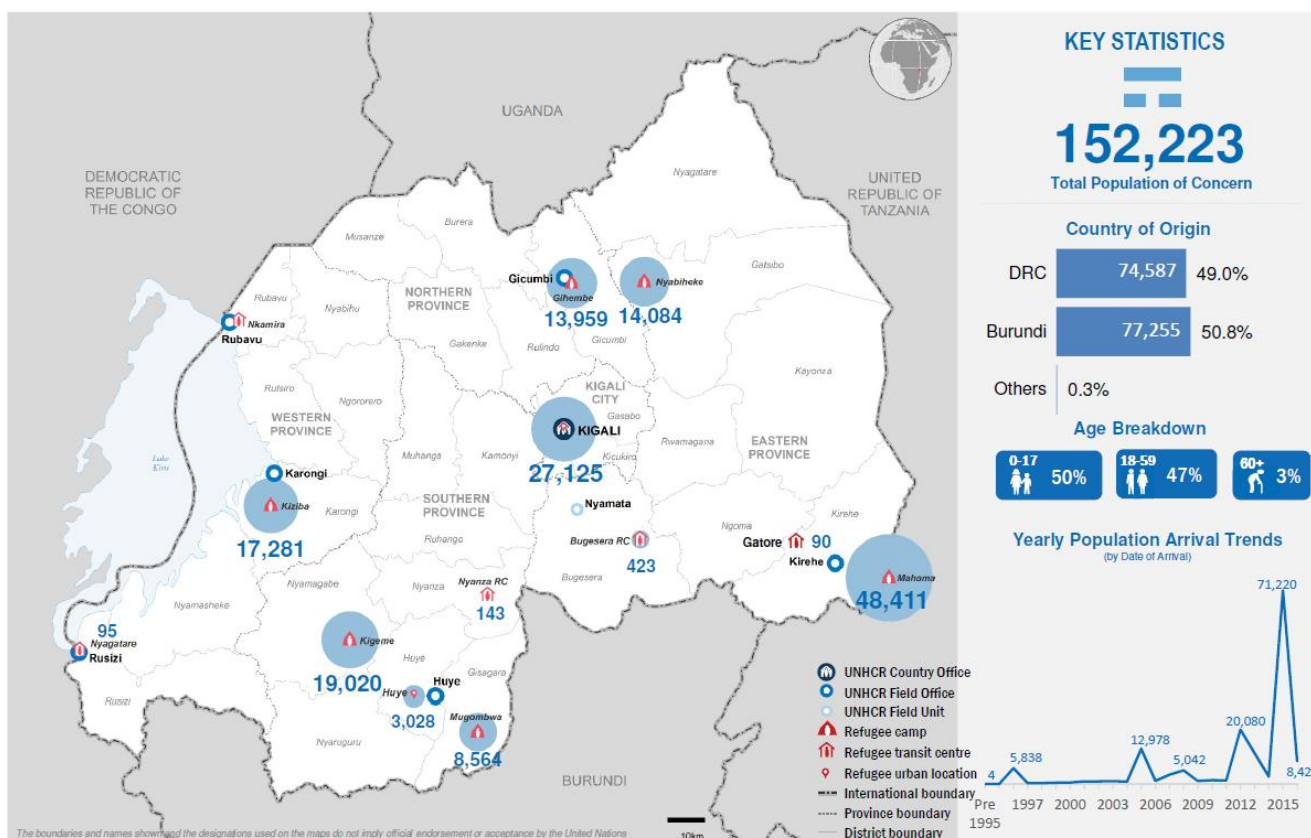
Shortage of infrastructure in Gatore Reception Centre: Due to recent outbreaks of yellow fever declared in Angola and in the DRC, the Ministry of Health in Rwanda has issued mandatory surveillance protocol on yellow fever which requires refugees coming into Rwanda to be quarantined. Therefore, refugees passing through Gatore Reception Center must stay for an average of 6 days before they are transported to Mahama camp. As Gatore is hosting an average of 250 refugees per week, UNHCR will need more shelters, more latrines and more water to accommodate the cumulative number of refugees.



Refugee children stay in a communal tent in Gatore Reception Centre.

KEY STATISTICS (30 APRIL 2016)

152,223 Population of concern	2,448 Burundian unaccompanied and separated children	30,153 Urban refugees	1,935 Rwandan returnees received in 2016
---	--	---------------------------------	--



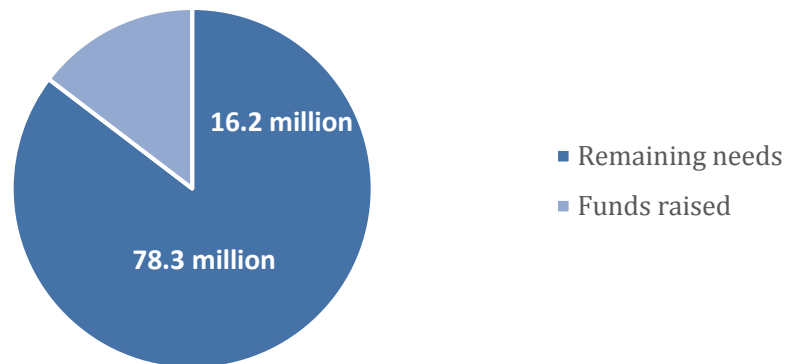
BURUNDI EMERGENCY UPDATE

New arrivals:

UNHCR continues to receive an average of 175 Burundian refugees per week. The majority of new arrivals continue to be young men between the ages of 18-35 years. During the second half of April, more individuals (men) have reported cases of arbitrary arrests, detentions and torture in Burundi. UNHCR's protection and health partners have increased their capacity in mental health services, such as psychosocial counselling, to cater to the increased needs.

Financial Information

The comprehensive needs for the 2016 interagency Burundi refugee response in Rwanda are estimated at over **USD 94.5 million**, however thus far **USD 16.2 million** has been received – representing a gap of **USD 78.3 million**.



Protection

- UNHCR and MIDIMAR conducted a comprehensive leadership training and induction for the 231 newly elected refugee leaders in the camp. The training focused on international protection, Rwandan laws relating to refugees, camp rules and regulations; immigration rules and regulations and on the roles and responsibilities of refugee leaders. The training also introduced the elected leaders to various activities in the camp in accordance with UNHCR PPA with partners.

Child Protection:

- 2,448** Burundian unaccompanied and separated children (UASC) have been registered since the onset of the influx in April 2015. Out of the UASC identified and assisted by UNHCR and partners since the beginning of the emergency, there have been **980** known cases of UASC reunified with their parents/customary caregivers or relatives.
- Since the beginning of the emergency, **1,312** new born babies in Mahama camp have been registered and issued with birth certificates. As for late registration, **401** cases have been submitted to court since April 2015, out of whom **296** received birth certificates.
- 228** child protection cases have been identified and assisted to date. The cases in April included a teenage pregnancy, physical assault, psychological abuse, corporal punishment, and a mentally disabled mother giving birth.
- Save the Children has started a reading program for children and youth to motivate the culture of reading for children who are in primary school.

Sexual and Gender Based Violence (SGBV)

- 238** SGBV cases in Mahama and the reception centers have been identified and assisted to date by UNHCR and partners. These cases include sexual assault, psychological/emotional abuse and denial of resources, opportunities and services.
- Plan International has been conducting socio-therapy sessions with 20 groups in different villages within Mahama camp to target a total of 430 refugees. Each group is composed of trusted community members that come together to discuss on their problems with confidentiality.

- The Legal Aid Forum (LAF) is a local NGO and now a protection partner for UNHCR in Rwanda. LAF has been conducting sensitization campaigns with refugees, coordination meetings with partners, facilitating registration of urban refugees and following up on legal cases of refugees.
- The International Federation of the Red-Cross donated “Kanga” (traditional clothing for women in Burundi) to 11,819 women in Mahama refugee camp, after persistent requests from the refugees for this highly sought-after fabric.

Challenges

- Substance & drug abuse is becoming a serious issue among unaccompanied minors (UAM) in Mahama. Moreover, in the last two weeks, the same UAMs have been involved in multiple robberies and theft in and outside the camp. The matter was reported to MIDIMAR and UNHCR and a decision was taken to refer them to ARC psychologist.
- Children Refugees newcomers to the camp are at risk of being out of school. They are not being admitted in school because they did not do the first school term and have no school document to prove that. However these children have expressed their will to return to school. Actions are being taken to ensure that these children are accommodated in school.



Health

- UNHCR through its partners ARC and SCI, provided primary level medical care to 12,585 refugees in Mahama camp for the month of April. Additionally, 407 refugee patients were provided with secondary and tertiary health care support.
- UNHCR and partners continued to support reproductive healthcare in Mahama refugee camp; 136 women gave birth to babies during the month of April and 99% of them were attended by the professional health care staff.
- A high number of mental health cases are being reported in Mahama camp. UNHCR, UNICEF and partners continue to provide psychosocial support to more than 6,000 children and their families.



Food Security and Nutrition

- UNICEF has distributed 13,513 grams of ready-to-use therapeutic food (RUTF) for the treatment of severe acute malnutrition (SAM), which has greatly contributed to the reduction of SAM case load.
- WFP is presently carrying out a new round of Food basket monitoring in all food camps (Congolese and Burundian camps) to verify whether all refugees receive their full food entitlements as required. The most vulnerable beneficiaries received additional fortified food supplement to improve their micronutrients intake. WFP equally provided targeted safety net assistance to the most vulnerable groups, including children under five, school children (refugees and surrounding communities), pregnant and lactating mothers and HIV/AIDS/TB patients on ART.



Shelter

- A total of 125 semi-permanent shelters, out of the 470 scheduled to be constructed with current funding levels, have been completed in April. There are currently 1,717 semi-permanent shelters in Mahama, but an additional 4,283 are needed.
- Among other refugees, 76 unaccompanied children whose tents have been destroyed will be relocated to semi-permanent shelters. Once the houses are allocated to the children, they will need support to plaster the walls with mud.
- The accommodation of asylum seekers in Gatore reception centre remains a challenge as there is a need for more shelters, latrines and water to accommodate the new arrivals.



Heavy rainfalls in Rwanda have caused extensive damages to the refugee camps.



Water and Sanitation (WASH)

- Water supply standards (20 L per person per day) remains consistent in Mahama camp.
- UNHCR's WASH partners, Oxfam and PAJER, have continued to construct dischargeable latrines in Mahama. A cumulative total of 1,088 drop-holes of dischargeable latrines has been completed by the end of the month, averaging 44.5 people per drop-hole (the average in an emergency is 50 people/drop-hole). OXFAM did a handover to PAJER so that PAJER is now in charge of the maintenance and construction of dischargeable latrines in both Mahama camp and Gatore reception center.

CONGOLESE REFUGEE PROGRAM UPDATE



Protection

- A meeting on Birth Attestation issuance was held in Gihembe Camp. UNHCR, MIDIMAR and ARC medical staff have agreed on the Final Guideline Document that will be used to issue Birth Attestations to those born in and outside the camp. The same agreement will be implemented for Nyabiheke.
- UNHCR conducted monitoring of community engagement activities in Gihembe camp on the prevention of the SGBV incidents among couples. Refugees participated actively in the discussion and cited stress caused by poverty as the main cause of gender-based violence among couples. Participants observed that women are becoming increasingly abusive toward their husbands verbally, blaming them for not providing for their households.

Resettlement to a third country:

- Total submissions in April 2016: 23 cases with 63 individuals
- Total submissions in 2016: 152 cases with 476 individuals
- Total departures in April 2016: 144 cases with 587 individuals
- Total departures in 2016: 205 cases with 891 individuals



Education/Vocational training

- UNHCR has been approached by MIDIMAR to construct 30 additional classrooms in a host community school in the vicinity of Kigeme camp. UNHCR supports the request and is currently exploring possibilities to fund and implement this activity, which is in line with its national integration strategy.



Health

- ARC's health staff conducted testing for Hepatitis B and C among people living with HIV in Gihembe, Nyabiheke and Mahama camps. In total 107 people were screened in Gihembe, 116 in Nyabiheke, and 474 people in Mahama.
- A series of sensitization sessions have been conducted by community health workers and nutrition staff in Mugombwa camp targeting pregnant women on "First 1000 days of the child's life" and exclusive breast feeding targeting 775 pregnant and lactating women.
- Condom distribution, VCT and PMTCT services and access to ART were ensured in all Congolese camps with the support of UNHCR partners.



Water and Sanitation (WASH)

- Water supply standards have always been low in Gihembe camp, but recently UNHCR was able to raise the average of 8 L/person/day to 16L/person/day through rain harvest, water trucking and by revising the contract with Rwanda's Water Supply and Sanitation service (WASAC). WASAC agreed to reduce the price of water supply to Gihembe camp

by a third of the price. Recently, UNICEF was able to complete the construction of a 250m³ water tank, which will help to significantly increase water supply to refugees in Gihembe camp. The existing reservoirs in the camp will be maintained as a backup after the completion of the newly constructed tank.

- Water supply standards have also improved in Nyabiheke to 15.5 L/person/day with the help of 2 boreholes and rain harvest.
- In partnership with Kivuwatt, ARC launched new dischargeable latrines in Kiziba Camp. Funded by Kivuwatt and designed and constructed by ARC, the latrines will benefit both the refugees living in the camp as well as students from the neighbouring secondary school, who had been using pit latrines up until now.

Access to Energy and Environment

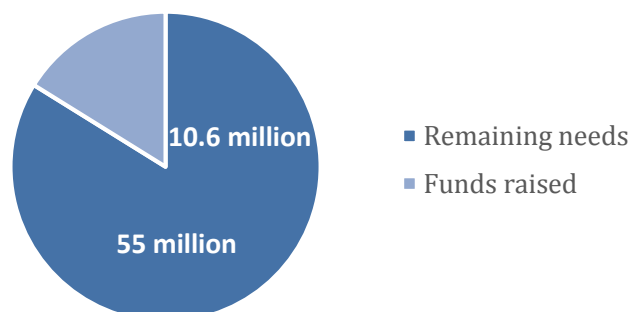
- The Global Alliance for Clean Cookstoves delegation drawn from different countries visited Mahama and Mugombwa camp to understand the cooking and energy challenges that refugees face. During the mission the delegation visited firewood distribution sites, livelihood projects for women and the market place. The refugees demonstrated how to use of the new energy conservation stove which will be distributed soon. The Global Alliance for Clean Cookstoves is a public-private partnership hosted by the UN Foundation to save lives, improve livelihoods, empower women, and protect the environment by creating a thriving global market for clean and efficient household cooking solutions.
- UNHCR's new local environmental partner, FSDS, have planted over 3,500 seedlings of various tree varieties in and around Gihembe and Nyabiheke camps.
- Soil erosion and landslide remains the main environmental concerns in the camps despite effort being made to mitigate them. A comprehensive solution would be to construct strong drainages system in all camps. A total cost estimation of USD 3.8 million is needed for mitigating erosion problems in four camps (Gihembe, Mugombwa, Mahama and Kigeme camps).

Food Security and Nutrition

- UNHCR has been able to identify 8,802 asylum seekers within the Congolese camps. UNHCR is still awaiting the results of the matching exercise of these asylum seekers against the national database from the National Identification Agency (NIDA), which would allow UNHCR to identify exactly whom amongst them should be given prima facie recognition as refugees. UNHCR has officially written to the Government of Rwanda requesting the results of the 2013-2014 matching exercise to be handed over. Pending the overdue provision from NIDA and the subsequent physical verification which will be implemented, UNHCR has officially requested WFP to conduct two exceptional food distributions, based upon an electronic list, for the months of April and May 2016.

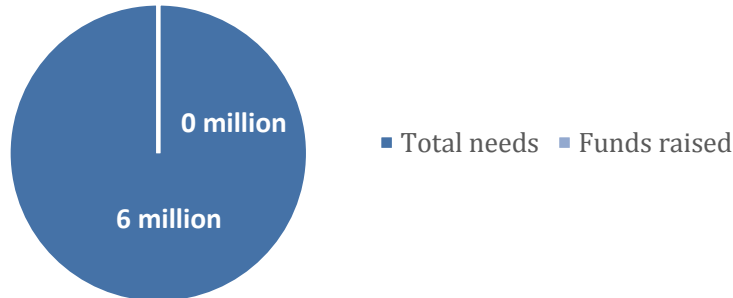
Financial Information – CONGOLESE REFUGEE PROGRAM

The comprehensive needs for the 2016 Congolese program is **USD 55 million**. Approximately **USD 4.5 million** has been raised by WFP, which covers the needs of Congolese refugees through June. **USD 6.1 million** has been raised by UNHCR Rwanda for its Congolese operation.



Financial Information – REINTEGRATION

- 1,935 former Rwandan refugees have returned to their country of origin in 2016.
- The comprehensive needs for reintegration for 2016 is **USD 6,031,085**. Unfortunately no funds have been received thus far.



UNHCR is grateful for the generous contributions of donor countries who have given un-earmarked and broadly earmarked contributions to UNHCR this year as well as the following donors who have directly contributed to the operation in 2015-2016:

United States of America | UN Central Emergency Response Fund | EU Humanitarian Aid and Civil Protection department (ECHO) | UK Department for International Development (DFID) | Japan | Belgium | The Church of Jesus Christ of Latter-Day Saints | The Howard G. Buffett Foundation | Sweden (via One UN) | Finland | USA for UNHCR

Contacts:

Martina Pomeroy, External Relations Officer, pomeroy@unhcr.org, Tel: +250-252-589-874, Cell: +250 (0) 78-830-2769
 Erika Fitzpatrick, Associate PI/Reporting Officer, fitzpat@unhcr.org, Tel: +250-252-589-874, Cell +250 (0) 78-838-9828

Daily Statistics: <http://data.unhcr.org/burundi> UNHCR Rwanda: www.unhcr.rw Twitter: @RefugeesRwanda