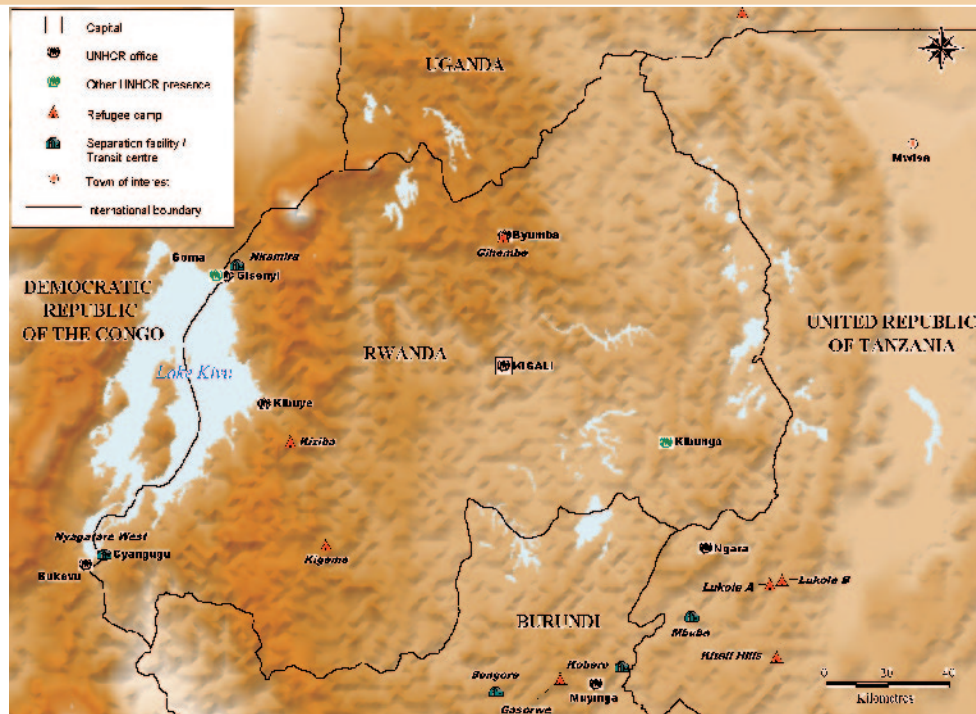


Rwanda

Main Objectives

- Provide protection and material assistance to refugees, including undertaking refugee status determination (RSD) procedures on behalf of the Government, until such time as the National Refugee Council becomes fully operational.
- Assist the Government of Rwanda and non-governmental institutions in implementing the new refugee legislation.
- Increase awareness among refugees of HIV/AIDS and gender-based violence and sustain the work of the Task Force on sexual exploitation of refugee girls and women.
- Address environmental degradation in refugee-impacted areas through UNHCR-funded projects as well as through joint programmes under the umbrella of UNDAF.
- Facilitate the voluntary repatriation of Rwandan refugees from neighbouring countries and elsewhere through support to the Rwandan Joint Commission for the Repatriation and Reintegration of Rwandan Refugees.
- Conduct monitoring of returnees to ensure that returns remain safe and dignified.
- Trace the relatives of unaccompanied minors in third countries who wish to return home.
- Participate in the civilian component of the MONUC-led Disarmament and Demobilisation process, sponsored by the World Bank.
- Prepare for possible massive returns of Congolese refugees from the Democratic Republic of the Congo (DRC) assuming that the Pretoria Peace Agreement is fully implemented.



Planning Figures

Population	Jan. 2003	Dec. 2003
Burundian Refugees	550	600
Congolese Refugees (DRC)	24,000	22,000
Urban refugees	2,340	2,300
Returnees ¹	25,000	25,000
TOTAL	51,890	49,900

¹ Since repatriation began, more than three million Rwandan refugees have returned home.

Total Requirements: USD 8,036,195

Working Environment

Recent Developments

Rwanda continued to make progress in the areas of democratisation, decentralisation, reconciliation and the establishment of the rule of law. The Government has undertaken concerted efforts to deal with the backlog of over 100,000 *génocidaires* and other suspects awaiting trial. The process started with the holding of nationwide elections of Judges to sit on the *Gacaca* Courts (traditional courts) and the training of officials. The trials finally began in the last week of June 2002.

Following the communal elections of March 2001, district elections were conducted in the first quarter of 2002. The Constitutional Commission sounded out public opinion, with the result that plans are on track to hold the Constitutional Referendum and Presidential and Parliamentary Elections around mid-2003.

The Government of Rwanda completed its Strategy on the Reduction of Poverty, seen as critical for consolidating peace in the country.

Reported cases of insurgency subsided in 2002, although relations with Uganda remained strained, with each country accusing the other of harbouring the other's dissidents. UNHCR was called upon to assess the refugee claims of some persons accused of being dissidents, and to find third countries willing to accept them.

The return of Rwandan refugees remained a major priority for the Rwandan Government. In this respect, a Tripartite Rwanda/Tanzania/UNHCR sensitisation mission went to the Rwandan refugee camps in Ngara, Tanzania, in early July 2002. A draft Tripartite Voluntary Repatriation Agreement was discussed between the Governments of Rwanda, the Republic of the Congo (RoC), and UNHCR and this should be finalised in the latter part of 2002 or early 2003. Similar agreements for the return of Rwandans are envisaged with Cameroon, Malawi and Zambia. During the first nine months of 2002, some 8,000 Rwandan refugees returned to Rwanda.

Refugees in Rwanda remained almost completely dependent on handouts of food and other essential items, owing to the location of the refugee camps, the severe scarcity of land, high national unemployment rates and discriminatory employment policies in favour of nationals. There are only limited employment opportunities in the camps, and any work to be found with nationals living nearby will generally be extremely poorly remunerated.

UNHCR remains concerned by the high per capita incidence of HIV/AIDS infection in Rwanda, and therefore continues to support all relevant public health and education programmes.

Although preliminary enquiries exposed no instances of sexual exploitation of refugee girls and women by humanitarian workers, UNHCR, nonetheless, installed a Task Force involving implementing partners and refugees to keep this issue under surveillance and to forestall its occurrence.

Within the limits of available resources, the environmental programme was carried out successfully in 2002 and will continue in 2003.

Constraints

The 1999 Lusaka Cease-Fire Agreement remained largely unimplemented. Although the Inter-Congolese Dialogue took place as planned in Sun City, South Africa, some parties were excluded, and, as a result, the talks produced relatively few tangible results. Consequently, UNHCR could not facilitate the return of the bulk of Rwandan refugees from the eastern part of the DRC.

UNHCR's internal Guidelines of 2000 on return to the Kivus remained valid, principally because of the absence of meaningful peace and the fact that any returns to that region would not be durable, as the refugees would end up in IDP camps. Similarly, the security situation in Burundi remained extremely volatile, effectively preventing refugees from returning. From the end of August 2002, the Government of Rwanda, the Goma authorities in eastern DRC and *le Rassemblement congolais pour la démocratie*, conducted a forcible operation returning refugees to North Kivu. There were clear indications that security, health, sanitation and other conditions in Kitchanga, the area of return, were completely inadequate, rendering these forced returns unworkable i.e. these people are expected to flee again. Because UNHCR was not involved in these movements, it was difficult to establish the precise numbers and profile of those who had been returned. UNHCR will continue to provide assistance to the remaining refugees who have not returned.

A major constraint was the absence of a centralised, fully equipped governmental department charged with responsibility for the management of refugee affairs.

Strategy

Protection and Solutions

In 2003, UNHCR will support the Government in the implementation of the new Law relating to Refugees with a view to building the capacity of the Government in refugee management. The aim is for government authorities to eventually take over this responsibility, in particular, the RSD procedure, and attendant responsibilities, such as the issuance of official Refugee Identification Documents. UNHCR will provide technical assistance in the drafting of the Internal Regulations for the National Refugee Council; UNHCR will also support capacity-building for members of the fledgling National Refugee Council, and the Secretariat which will serve the Council.

Continued political instability and armed conflict in the region hamper the search for durable solutions for uprooted people. Therefore existing basic assistance programmes for camp-based Congolese and Burundian refugees, will have to be continued, as will limited material assistance for vulnerable urban refugees. The second quarter of 2002 saw a deterioration in the treatment of urban refugees, with frequent arrests and detentions reported. Considerable human resources will be deployed to address the protection needs of urban refugees in 2003.

Although there were positive signs of a possible implementation of the Lusaka and Pretoria Peace Agreements during the last quarter of 2002, it is doubtful that this will have any significant effect on the prospects of return for Congolese refugees.

With respect to the Burundian refugees, UNHCR has been identifying third countries of resettlement, where feasible, as prospects of return to Burundi are virtually non-existent and local integration in Rwanda is impossible. UNHCR will advocate the restitution of refugee status for these refugees, which was granted by the former Government but rescinded by the current Government.

Assistance

Administrative as well as material assistance and services in the areas of health and education will continue to be provided to refugees hosted in

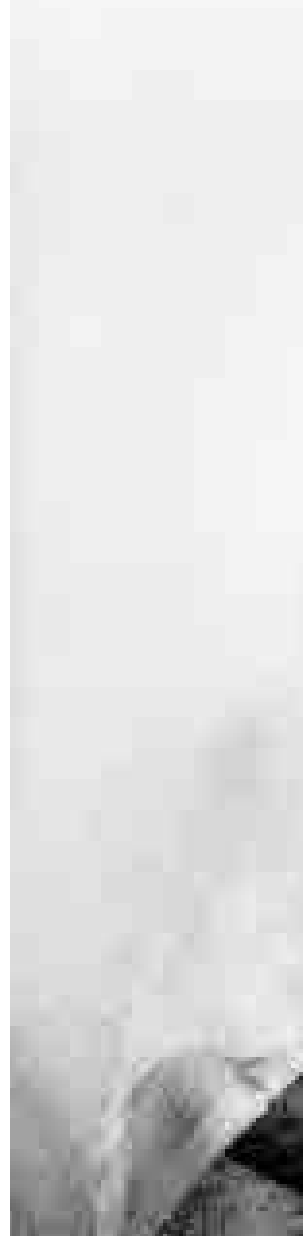
camps. Efforts to include refugees in the planning and management of assistance activities will continue. Promotional, educational and sensitisation activities will be conducted to reduce the incidence of gender-based violence. Similarly, UNHCR will endeavour to engender attitudinal changes to the Congolese traditional practice of wife abduction (the abducted usually being adolescent girls). UNHCR will also address the promotion of reproductive health and heightening of HIV/AIDS awareness. Vocational skills (including skills for the illiterate) and recreational activities will be promoted with a special emphasis on girls.

Arrangements will be made with an international NGO for the provision of material assistance to urban refugees. The majority of urban refugees who are unable to achieve self-sufficiency in the urban context will be assisted to relocate to refugee camps.

UNHCR will work with the ICRC in the tracing of unaccompanied minors, their repatriation, and eventual re-unification with their families (or foster families).

Rwandan returnees will be assisted with transportation to their communities of origin, and with food and household items to tide them over after the initial period of their arrival. UNHCR will pay special attention to the needs of vulnerable returnees, including the elderly, single parent families and handicapped persons.

The Office, in co-operation with the Rwandan Government, will aim to prevent further environmental degradation in refugee-impacted areas, and build on existing conservation and reforestation activities. The use of firewood in refugee camps has contributed to deforestation in the areas where





Adult literary training is a priority of the Rwandan Women's Initiative-funded project. UNHCR / R. Chalasani

refugees settled; UNHCR will therefore continue to provide fuel-efficient stoves to refugees, and promote the use of alternative fuel sources.

Desired Impact

It is hoped that, in co-operation with the Government, adequate protection and assistance for all refugees and other persons of concern to UNHCR can be maintained and a culture of respect for refugee protection developed.

The overall health status of the refugees will be maintained by ensuring full access to primary health care and basic services. Increased involvement in community affairs will help the refugee population to overcome, to a certain extent, their sense of dependency, and the acquisition of skills and education will, in due course, facilitate their reintegration.

Organisation and Implementation

Management Structure

In 2003, UNHCR will operate with 62 staff in Rwanda (eight international, 43 national, 10 UNVs, and one JPO). The office in Kigali will be responsible for overall management of the programme and liaison with the Government, diplomatic missions, and NGOs. Two field offices (at Kibuye and Byumba) as well as three antennae offices (Cyangugu, Gisenyi, and Kibungo) will administer the activities in field locations. With elections scheduled for 2003, at the end of Rwanda's transitional period, UNHCR is concerned about the security of refugees and humanitarian personnel. This means strict application of the UN Security Management Team's recommendations, including the mandatory use of military escorts for travel to

certain areas. Unfortunately, this often results in reduced access to the refugees.

Co-ordination

UNHCR will work with two government institutions and five NGO implementing partners, as well as with WFP. In the area of reintegration, the Office will co-operate closely with development agencies present in the country and participate in the Brookings Process. The Ministry of Local Administration and Social Affairs will remain responsible for overall camp management, including distribution of food and non-food items.

Offices

Kigali

Byumba

Cyangugu

Gisenyi

Kibuye

Kibungo

Partners

Government Agencies

Joint Commission for Repatriation, Rehabilitation and Reintegration of Rwandan Refugees

Ministry of Local Administration and Social Affairs

NGOs

African Humanitarian Action

American Refugee Committee

Jesuit Refugee Services

Norwegian People's Aid

Others

Deutsche Gesellschaft für Technische Zusammenarbeit

WFP

Budget (USD)

Activities and Services	Annual Programme
Protection, Monitoring and Co-ordination	1,479,700
Community Services	440,904
Domestic Needs	237,410
Education	271,977
Food	52,851
Forestry	54,825
Health	780,183
Income Generation	21,228
Legal Assistance	268,481
Operational Support (to Agencies)	741,852
Sanitation	385,552
Shelter / Other Infrastructure	189,814
Transport / Logistics	1,667,445
Water	131,478
Total Operations	6,723,700
Programme Support	1,312,495
Total	8,036,195