



INTERNATIONAL  
OLYMPIC  
COMMITTEE

The Olympic Studies Centre

## Olympic Summer Games Villages from Paris 1924 to Rio 2016

*Reference Document*

Facts and figures on the Olympic Villages

March 2016



© IOC – John HUET



## Foreword

The IOC Olympic Studies Centre is the world source of reference for Olympic knowledge. We share this knowledge with professionals and researchers through providing information, giving access to our unique collections, enabling research and stimulating intellectual exchange.

As an integral part of the IOC, we are uniquely placed to provide the most accurate, relevant and up-to-date information on Olympism. Our collections cover all the key themes related to the Olympic Games and the Olympic Movement and their place within society.

Among the resources you can find the official documentation of the IOC's decision-making organs, reports produced by the IOC and the Organising Committees of the Olympic Games as well as publications from internationally renowned researchers.

Our mission is also to promote research in order to foster knowledge exchange between the academic world and the IOC and the Olympic Movement. We offer academics the opportunity to access to research funds via our grant programmes and to network with academic experts in Olympic studies.

To learn more on the Olympic Studies Centre, consult our webpage [www.olympic.org/studies](http://www.olympic.org/studies) or write us at [studies.centre@olympic.org](mailto:studies.centre@olympic.org).

### **Legal Disclaimer:**

*"This content (the **"Content"**) is made available to you (**"You"**) by the International Olympic Committee (the **"IOC"**) for non-commercial, educational, research, analysis, review or reporting purposes only. The Content shall not be re-distributed, as made available to you by the IOC, in part or in whole, except to the extent that such content is a derivative work created by You. Re-distribution of compilations of the Content made available to you is expressly excluded. You must give appropriate credit, and indicate if changes were made. You may do so in any reasonable manner, but not in any way that suggests the IOC and its affiliated entities including The Olympic Studies Centre (**"OSC"**) endorses you or your use. The IOC by means of the OSC endeavours to provide you with accurate and up-to-date information. The IOC and the OSC make no warranties or representations about and assumes no liability for the information included in the Content, neither its accuracy nor completeness. You agree to indemnify, defend and hold harmless the IOC from and against all claims, losses, expenses, damages and costs, resulting from or arising out of your use or misuse of the Content, or any violation by you of these terms, which shall be governed, interpreted and construed by, under and pursuant to the laws of Switzerland, without reference to its principle of conflict of laws. You agree that any dispute, controversy or claim arising out of or in relation to the present Licence of Use shall be submitted to the exclusive jurisdiction of the competent courts in Lausanne, Switzerland."*

**TABLE OF CONTENTS**

<b>Introduction.....</b>	<b>4</b>
<b>Paris 1924.....</b>	<b>7</b>
<b>Los Angeles 1932 .....</b>	<b>9</b>
<b>Berlin 1936 .....</b>	<b>12</b>
<b>Helsinki 1952.....</b>	<b>15</b>
<b>Melbourne/Stockholm 1956 .....</b>	<b>18</b>
<b>Rome 1960.....</b>	<b>22</b>
<b>Tokyo 1964.....</b>	<b>25</b>
<b>Mexico City 1968.....</b>	<b>28</b>
<b>Munich 1972 .....</b>	<b>31</b>
<b>Montreal 1976.....</b>	<b>34</b>
<b>Moscow 1980 .....</b>	<b>37</b>
<b>Los Angeles 1984 .....</b>	<b>40</b>
<b>Seoul 1988.....</b>	<b>43</b>
<b>Barcelona 1992 .....</b>	<b>46</b>
<b>Atlanta 1996 .....</b>	<b>49</b>
<b>Sydney 2000.....</b>	<b>52</b>
<b>Athens 2004 .....</b>	<b>55</b>
<b>Beijing 2008.....</b>	<b>58</b>
<b>London 2012 .....</b>	<b>61</b>
<b>Rio 2016.....</b>	<b>64</b>
<b>Sources .....</b>	<b>66</b>
<b>Images .....</b>	<b>70</b>



## Introduction

The Olympic Village is today a key element in the organisation and success of the Games. It brings together the world's athletes in a unique location, and offers them an accommodation solution adapted to their needs during the final phase of their preparation. It is the fruit of an evolution process inseparably linked to that of the Olympic Games.

Already in Antiquity, in order to take part in the Olympic Games, the athletes who had come from different cities gathered and lived in the same place. The town of Elis became the venue for this gathering, and at least a month before the Games, the participants arrived here to complete their training and receive instructions for the competitions. They then went to the sanctuary of Olympia around 60 kilometres away, and stayed there during the actual events. As mentioned by the historian Nicholas Yalouris (1997), the gathering of athletes from the Ancient Greek world for the Games encouraged the development of a common awareness and shared ideal. Subsequently, the scope of the ancient Olympic Games expanded with the incorporation of Greece into the Roman Empire and the participation of Roman citizens in the Games.

For the first editions of the modern Olympic Games, between 1896 and 1920, there was no real Olympic Village. The teams generally stayed in hotels, public or military buildings, with local people or even on the boats which had transported them there. The *General Technical Rules* applicable to the 1924 Games in Paris stipulated that "The Organising Committee for the Olympic Games is required to provide the athletes with accommodation, bedding and food, at a fixed rate which shall be set beforehand per person and per day [...]."<sup>1</sup> As a result, the organisers established an accommodation centre called the *Olympic Village*, and offered the teams of the different nations the chance to stay in the same location, under the same conditions, and with common services. During the preparations for the 1928 Games in Amsterdam, consideration was given to creating an Olympic Village, but the organisers opted for other solutions. For the 1932 Games in Los Angeles, however, an Olympic Village with a capacity of 2,000 people was built to the west of the city. From then on, a Village would be created for every edition of the Summer Games, with the exception of London in 1948, which had to face the material challenges of the immediate post-war period. For the Winter Games, between 1924 and 1956 the teams stayed mainly in hotels, apart from the 1952 Games in Oslo, where three accommodation sites were created.

With each edition, the concept was reinforced and developed. As well as the conviviality element, creating an Olympic Village capable of compactly housing thousands of athletes and their entourage members presents numerous advantages, such as economies of scale or the optimisation of team transport. As the success of the Games has grown, the size of the Villages has increased; the services have become more diverse; and the planning and functions of the different areas of the site have evolved and become standardized.

The transformation of the Villages has also reflected that of society. For example, for the Summer Games, until the 1950s no women were housed in the Village, but rather in other accommodation sites. At the 1956 Games in Melbourne, for the first time they had their own part of the main Village, but one to which the male athletes were not admitted. However, the women had access to other parts of the Village such as the dining rooms. This situation continued until the 1980s. Starting with the 1984 Games in Los Angeles, the athletes were accommodated by team, and this separation disappeared.

Technological developments have also had an impact on the facilities and services of the Olympic Villages with, for example, the appearance of internet access in the 1990s and, at the end of the 20<sup>th</sup> century, the increasing use of materials and methods aimed at saving energy and resources.

The main Olympic Village is one of the imposing architectural projects which characterise an edition of the Games. While the first ones were temporary, as in Paris in 1924 or Los Angeles in 1932, they are now built to last. So re-using them after the Olympic event is of key importance to the host city. The

---

<sup>1</sup> *Statuts du Comité International Olympique, Règlements et protocole de la célébration des Olympiades modernes et des Jeux Olympiques quadriennaux, Règles générales techniques applicables à la célébration de la VIIIe Olympiade Paris 1924*, Lausanne: IOC, ca 1924, [p. 21](#).



authorities see a chance to develop an innovative project, capable of creating a strong urban legacy of lasting benefit to the local population. And what is more, the Villages built today for the Olympic Games are also used for the Paralympic Games held just afterwards.

This document presents the editions of the Olympic Summer Games for which an Olympic Village was created. It does not include the plans for the editions which were cancelled or the accommodation used when there was no main Village (before 1924 or London 1948). It does however provide details about any other accommodation sites arranged by the organisers in addition to the main Village. As these sites were not necessarily called “villages”, the terminology used varied from one edition to the next. Only the accommodation sites for athletes and team officials have been included.

Note also that, unless indicated otherwise, the data and information concerning the main Olympic Village and additional accommodation sites refer to their specific configuration for the Games. Indeed, depending on the reconversion project for after the Games, the sites are generally reconfigured to adapt them to their new use. This sometimes means removing infrastructure and temporary services or reducing the capacity of the Village, which is often increased for the Games themselves.



1

LE VILLAGE OLYMPIQUE



2

AN  
PARIS

2

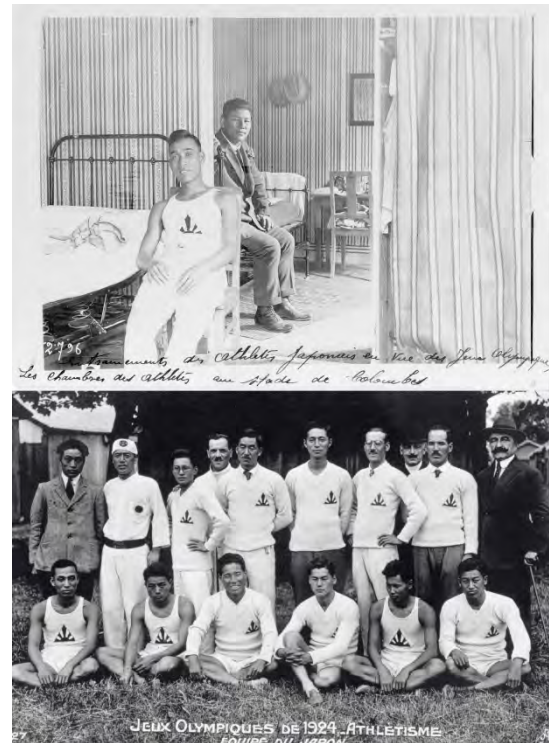


## Paris 1924

### MAIN VILLAGE

<b>Location:</b>	On the Boulevard de Valmy, east of the Stade Yves-du-Manoir, in the commune of Colombes.
<b>Type of infrastructure:</b>	New
<b>Architects:</b>	n/a
<b>Capacity:</b>	n/a
<b>Surface area:</b>	n/a
<b>Athlete accommodation:</b>	Wooden huts
<b>Opening and closing dates:</b>	n/a

Find out more about [Paris 1924](https://olympic.org/paris-1924) on [olympic.org](https://olympic.org).



### Concept and services:

The Village was next to the Colombes site which contained, notably, the main stadium for the Games. The furnished wooden huts were intended for three people. The Village offered shared services such as a post office, a currency exchange office, a left luggage office, a telegraph and telephone service, a laundry, a newspaper kiosk and a hairdresser. The Village also had running water and dining halls, offering three meals a day.

The teams could reserve places in the Village by making a minimum guarantee payment. Standard prices per day were charged by bed and board.

However, not all the teams made use of the Village, and some made other arrangements. The US team, for example, made its main base at Rocquencourt but, for space reasons, ended up renting additional beds in the Olympic Village for its male swimmers. To help the teams from other countries, the organisers created a body responsible for looking for and centralising accommodation possibilities for the athletes.

Some of the events were held far from Paris, so the participants stayed near the competition venues. This was the case for example for the shooting events which were held in Reims and Châlons-sur-Marne.<sup>2</sup>

### AFTER THE GAMES

This first version of an Olympic Village was a temporary construction. While the Stade de Colombes stadium still exists today under the name of *Yves-du-Manoir*, the site next door where the Village was located has now been built over.

<sup>2</sup> Today known as Chalons-en-Champagne







## Los Angeles 1932

MAIN VILLAGE	
<b>Location:</b>	Baldwin Hills, Los Angeles
<b>Type of infrastructure:</b>	New
<b>Architects:</b>	n/a
<b>Capacity:</b>	2,000 people
<b>Surface area:</b>	~100 hectares
<b>Athlete accommodation:</b>	500 houses that could each accommodate four people
<b>Opening and closing dates:</b>	n/a

Find out more about [Los Angeles 1932](http://Los Angeles 1932 on olympic.org) on [olympic.org](http://olympic.org).



### Concept and services:

As the intended accommodation site for all the male athletes, the Village aimed to bring all the nations under the same roof. The Baldwin Hills site, to the west of the city, was chosen on the basis of measurements made by the organisers, because its average temperature in July and August was 10 degrees lower than the other sites considered. It also offered an open view of the city and surrounding area, and was just over 10 minutes by car from the Olympic Stadium. As the land was to be returned to its original state after the Games, the construction was planned so as to minimise impact on the landscape. Piping and drainage work began in February 1932, and construction and fit-out work was completed in June.

Each of the houses measured just over four metres by seven, and accommodated four participants. They were spaced around three metres apart to reduce the risk of a fire spreading. With a view to their being dismantled after the Games, they were built of various sections of lightweight material and erected on site. Thirty-one dining halls were planned for meals. Bath houses with hot water, baths, showers and steam baths were located throughout the Village.

The Village had a hospital, a dentist, a fire station, a security service, a post office, a telephone network and a 2,000-seat open-air amphitheatre. An administrative building included among other things a laundry and a salon for welcoming visitors from outside. Around 24 hectares of lawns were planted. A wire fence around 2.5 metres high marked the perimeter of the Village. A bus service was provided to transport the athletes. The arrival of a team in the Village was marked by a flag-raising ceremony, a protocol element which continues to this day.

The female athletes were housed at the Chapman Park Hotel on Wilshire Boulevard, a building which has disappeared today. Entertainment was organised for them: music and dancing inside the hotel, a celebration for all the female athletes with their birthday during the Games, visits from famous actors and actresses, and the chance to attend a baseball match or symphony concert in the city on two evenings.



### AFTER THE GAMES

The Village was dismantled and the materials sold. In those tough economic times, most of the buildings were simply knocked down and the materials recycled. However, several buyers took some of them away piece by piece in order to give them a second life often, for example, converting them into holiday homes, stores or even mountain huts.

### DID YOU KNOW?

- *Smoky*, a black Scottish terrier, used to walk around the Village, and became its mascot. A photo in the Official Report for this edition of the Games shows him wearing a jacket with the word “mascot” below the Olympic rings. It is noted that *Smoky* was born actually in the Village. What is certain is that he is remembered.
- As Jeremy White explains (2002), it was originally planned for the facades of the houses to be different to reflect the various architectural styles of the geographic areas the teams came from. However, for budget reasons, it was finally decided to use a single building style for the houses.



1



2



3



4



5



6



7



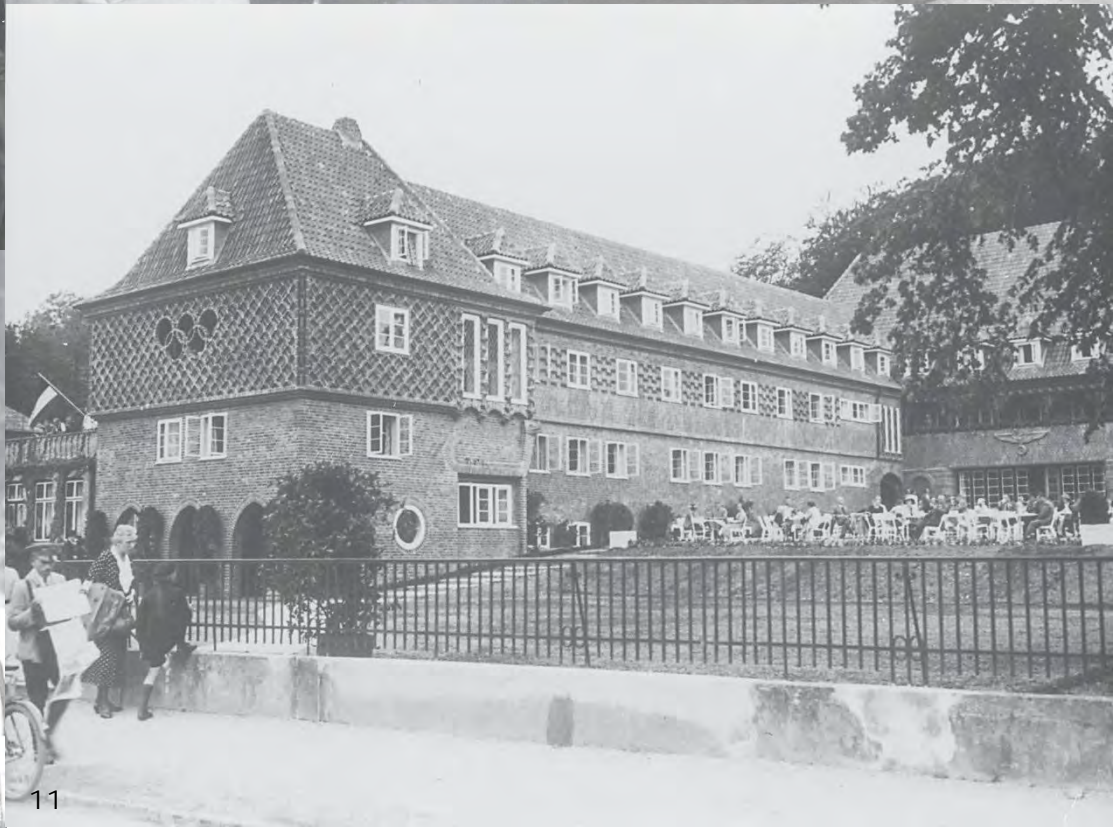
8



9



10



11



## Berlin 1936

MAIN VILLAGE	
<b>Location:</b>	Elstal, borough of Wustermark
<b>Type of infrastructure:</b>	New
<b>Architects:</b>	Werner March, Georg Steinmetz, Walter March and Heinrich Wiepking-Jürgensmann
<b>Capacity:</b>	4,600 people
<b>Surface area:</b>	55 hectares for the Village, with buildings on 10 per cent of this
<b>Athlete accommodation:</b>	140 single-storey houses with between 8 and 12 bedrooms, and military barracks
<b>Opening and closing dates:</b>	20.06. – 20.08.1936 <sup>3</sup>



Find out more about [Berlin 1936](#) on [olympic.org](#).

### Concept and services:

The organisers were keen on the idea of an Olympic Village for the participants, but as they did not have the means to finance such a project, they first approached the City of Berlin to see if the building of a new residential area would allow the athletes to be accommodated as the first occupants. As this solution was not possible, they approached the army, who initially agreed to lend them the barracks on the military site of Döberitz located 14km from the Olympic Park to the west of Berlin. Finally, the Ministry of Defence opted for a new Village to be built on an unused part of the Döberitz site. The Village was built between 1934 and 1936. Designed to endure, it was thus the first permanent Olympic Village constructed.

In addition to the 140 houses, the Village included administrative and technical buildings, 40 different sized dining halls to suit the different teams, a sauna, a post office, a bank, a medical centre, a restaurant open to visitors from outside, various shops and a laundry. It had training facilities, including a swimming pool, a sports hall and a 400m running track. A communal building housed two rooms for religious services and an event room which could hold up to 1,000 people. Entertainment was arranged there each evening during the Games. A bus service gave access to the Village and transported the athletes elsewhere.

In February 1936, to cope with the large number of athletes expected, a newly built series of military buildings to the north of the Village was loaned to the organisers, to increase the capacity of the Village to around 1,100 people. For their part, the female athletes were accommodated in student dormitories at the Olympic Park.

<sup>3</sup> Dates of arrival of the first teams and departure of the last. The Village was officially handed over to the organisers on 1 July.

**AFTER THE GAMES**

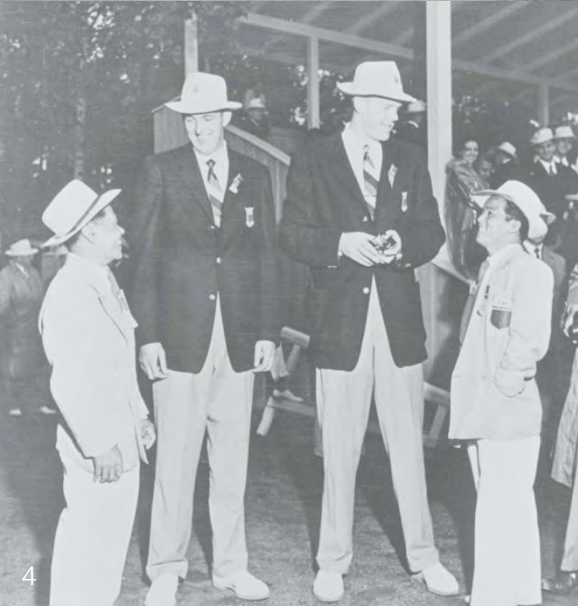
According to the book by Martin Kaule (2014), the Village was used by the German army from 1936 until 1945. It was used to house German refugees between 1945 and 1949. Between 1947 and 1991 the Soviet army used it. It became a historic monument in 1993 and then, in 2004, an open-air museum. This eventful history has led to modifications to the original plans. Some of the buildings have been destroyed and new ones built. Renovation work has also been undertaken.

**Additional Villages and accommodation sites**

KIEL		
<b>Use:</b>	Participants in the sailing events	<b>Capacity:</b> ~250 people
<b>Description:</b>	Four accommodation sites, including a building entitled "Olympic Home" built for the occasion to house 115 athletes and officials.	
GRUNÄU		
<b>Use:</b>	Participants in the rowing and canoeing events	<b>Capacity:</b> ~685 people (not including the Berlin Rowing Association)
<b>Description:</b>	The castle and police school of Köpenick, together with a school and the buildings of the Berlin Rowing Association, were used as accommodation sites.	

**DID YOU KNOW?**

- When the sports field and pond of the main village at Döberitz were being created, objects from around 3,000 BC were discovered, including amphorae and fishing tools.
- The Olympic Village aroused great interest in Germany, so much so that the organisers opened it to the public before the Games from 1 May to 15 June 1936. More than 379,000 people visited it during that time!





## Helsinki 1952

MAIN VILLAGE	
<b>Location:</b>	Käpylä, Helsinki
<b>Type of infrastructure:</b>	New
<b>Architect:</b>	M. P. Salomaa (chief architect)
<b>Capacity:</b>	4,800 people
<b>Surface area:</b>	n/a
<b>Athlete accommodation:</b>	13 buildings comprised of a total of 1,630 bedrooms divided between 545 apartments
<b>Opening and closing dates:</b>	n/a

Find out more about [Helsinki 1952](https://olympic.org/helsinki-1952) on olympic.org.



### Concept and services:

The main Village was built in the Käpylä district, 2.5km from the Olympic Stadium. Temporary facilities, including extra bathrooms and a restaurant, were added for the Games. Outdoor and indoor training facilities were available close to the Village, together with a 30-bed hospital and a cinema. There were also various shops and saunas offering services to the inhabitants, including a post office, bank, laundry, hairdresser and cobbler. Building work on the Village began in October 1950.

For their part, most of the women's teams stayed in a nursing school around a kilometre from the Olympic Stadium. It accommodated 658 persons, divided into 262 single or double bedrooms. The site had a gym room, lounges, a sauna and a park.



### AFTER THE GAMES

As planned before the Games, the Village became a residential area, which it still is today.

## Additional Villages and accommodation sites

There were various accommodation sites in addition to the main Olympic Village (see below). Additionally, the majority of participants in the sailing events stayed with Finnish sailors, with the exception of a few teams who made other arrangements or stayed in the main Village.

HÄMEENLINNA		
<b>Use:</b>	Participants in the modern pentathlon events	<b>Capacity:</b> ~200 people
<b>Description:</b>	The athletes stayed in one-, two- or three-person bedrooms in a local hotel.	
OTANIEMI		
<b>Use:</b>	The teams from Bulgaria, China, Hungary, Poland, Romania, Czechoslovakia and the Soviet Union	<b>Capacity:</b> 1,388 people
<b>Description:</b>	The teams stayed on the site of the current Helsinki University of Technology. The female athletes in the teams concerned occupied one of the nine residential buildings which made up the Village. The Olympic athletes were the first people to live on the site.	
RUSKEASUO		
<b>Use:</b>	The grooms and those athletes who wished to do so could stay close to their horses.	<b>Capacity:</b> ~180 people
<b>Description:</b>	Forty bedrooms for between four and six people were used in an establishment for disabled war veterans located a kilometre from the stables.	
SANTAHAMINA		
<b>Use:</b>	Most of the Finnish team	<b>Capacity:</b> 240 people
<b>Description:</b>	The Military Officers School was used to provide accommodation.	

### DID YOU KNOW?

- An Olympic Village composed of 23 buildings was also planned at Käpylä for the Games of the Olympiad in 1940. Although these Games were cancelled because of the Second World War, the buildings designed for around 3,200 athletes and 500 families were still built as planned, and helped to relieve the housing shortage in the capital.

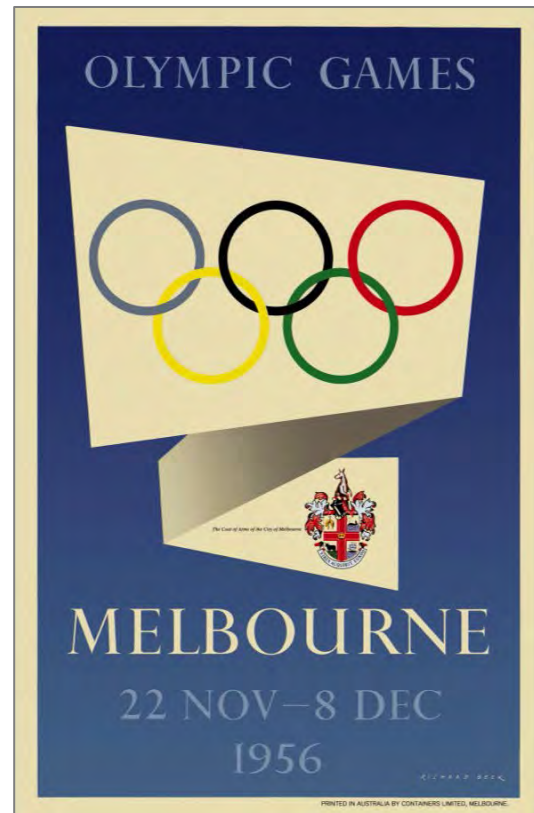






## Melbourne/Stockholm 1956

MELBOURNE: MAIN VILLAGE	
<b>Location:</b>	Heidelberg West, Banyule
<b>Type of infrastructure:</b>	New
<b>Architects:</b>	The architects of the Housing Commission of Victoria established the general plan of the Village. The Organising Committee's architects were in charge of the temporary buildings.
<b>Capacity:</b>	6,500 people
<b>Surface area:</b>	60 hectares, 15 of these for sports fields and annexes
<b>Athlete accommodation:</b>	Various types of building, from individual houses to buildings with two or three floors
<b>Opening and closing dates:</b>	29.10. <sup>4</sup> – 14.12.1956 <sup>5</sup>



Find out more about [Melbourne/Stockholm 1956](http://olympic.org/Melbourne/Stockholm_1956) on olympic.org.

### Concept and services:

Construction of the Village was financially supported by the Australian government through the Housing Commission of the State of Victoria, with a view to offering accommodation for rent or for sale after the Games. The temporary annex buildings, like the 20 dining rooms, kitchen and storage buildings, were built by the Organising Committee, again thanks to public funds. The communal building, which included a dance hall and cinema, was built by the city of Heidelberg.

The accommodation part of the Village was composed of various types of houses and buildings for the teams and their staff. Totalling 365, these buildings represented 841 housing units. Their construction began in June 1954 and ended in August 1956. The Village included various services, such as a sauna, a medical and dental centre, a bank, an interpreting service, hairdressers, make-and-mend centres and a cobbler. In addition, representatives of different religions were appointed, and rooms provided for them in which to hold conversations or organise services. Training grounds, including an athletics track, were next to the Village. A press centre, a post and telephone office, a restaurant open to the public, plus various shops, were also close by.

Musical events, dance shows and film projections were organised in the Village. At the request of some athletes, excursions and visits were organised to various places and industries in the region, like the Maroondah Dam or animal breeding farms.

<sup>4</sup> Date of the official opening. Athletes from three teams arrived at the Village before this date, as early as the 16 October.

<sup>5</sup> Date on which the last teams left.



### AFTER THE GAMES

The Village became a residential area. Between 2005 and 2013, the neighbourhood was part of a renewal programme supported by the authorities. One of the training grounds next to the Village became the stadium of local football club Heidelberg United FC.

## Additional Villages and accommodation sites

BALLARAT	
<b>Use:</b> Participants in the rowing and canoeing events	<b>Capacity:</b> 600 people
<b>Description:</b>	The canoeing and rowing events were held on Lake Wendouree around 100 kilometres from Melbourne, so a specific accommodation centre was set up at Ballarat for the athletes concerned. A centre for migrants was used as the Olympic Village. It had in particular a post office, a bank, medical services, a canteen and a recreation room.

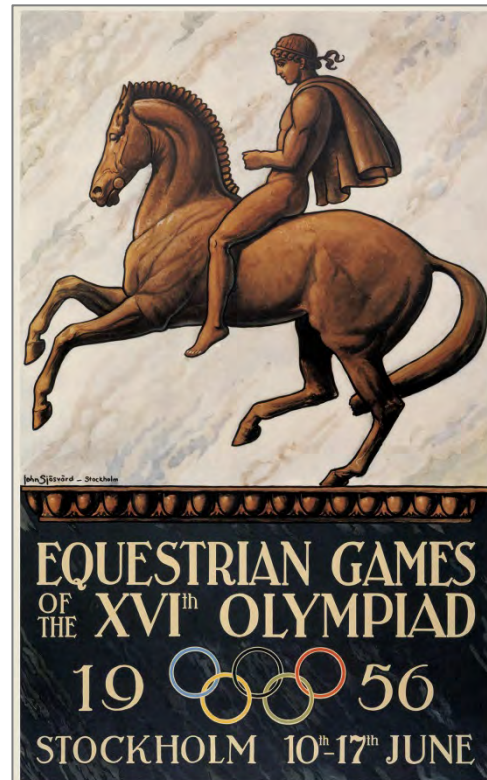
### DID YOU KNOW?

- According to the publication *Nation with Nation* (1997), the Village sauna was such a success that it caught fire. Designed for 100 people a day, it sometimes had more than 500. The installations, pushed to their maximum capacity to maintain the temperature, ended up by overheating! It was not a serious incident, however, and the damage was quickly repaired.

**STOCKHOLM: MAIN VILLAGES**

<b>Location:</b>	Karlberg Castle, Solna and Näsby Castle, Täby
<b>Type of infrastructure:</b>	Existing
<b>Architects:</b>	Jean de la Vallée for Karlberg / Nicodème Tessin l'Ancien for Näsby
<b>Capacity:</b>	n/a
<b>Surface area:</b>	n/a
<b>Athlete accommodation:</b>	A wing of the castle and a special section for the female athletes in Karlberg / No details for Näsby
<b>Opening and closing dates:</b>	04.06.1956 <sup>6</sup> - n/a

Find out more about [Melbourne/Stockholm 1956](http://Melbourne/Stockholm 1956) on [olympic.org](http://olympic.org).

**Concept and services:**

Two Olympic villages were fitted out for the participants in the equestrian competitions of the 1956 Summer Games, which were held in Stockholm.

The first was in Karlberg Castle, a 17<sup>th</sup> century building turned into a military academy, situated south of the municipality of Solna, near the centre of Stockholm. Riders from 25 countries stayed there. The residents had access to various parts of the castle to eat, relax and rest.

The second village was in Näsby Castle, which then housed the Swedish Naval School, around 12km north of Stockholm, in the municipality of Täby.

In addition, the male grooms were offered accommodation and catering possibilities within proximity of the stables of the Swedish Royal Guard which were close to the Olympic Stadium. For their part, the female grooms were housed with local families.

<sup>6</sup> Date of arrival of the first foreign participants at Karlberg and Näsby.





## Rome 1960

MAIN VILLAGE	
<b>Location:</b>	Villaggio Olimpico, Quartiere Parioli, Municipio II, Rome
<b>Type of infrastructure:</b>	New
<b>Architect:</b>	Vittorio Cafiero, Adalberto Libera, Amedeo Nuccichenti, Vincenzo Monaco and Luigi Moretti
<b>Capacity:</b>	~8,000 people
<b>Surface area:</b>	~35 hectares, only 25 per cent of which was built on.
<b>Athlete accommodation:</b>	33 buildings of between two and five storeys
<b>Opening and closing dates:</b>	25.07. – 20.09.1960



Find out more about [Rome 1960](http://olympic.org) on [olympic.org](http://olympic.org).

### Concept and services:

The organisers took advantage of the Games to regenerate a run-down neighbourhood, called the *Campo Parioli*, composed of decrepit shacks and huts to the north of the city in a bend of the River Tiber. The project to build a modern and permanent neighbourhood, which could easily be turned into a residential area for families after the Games, was also intended to help address the housing shortage affecting the Italian capital.

Work began on 10 May 1958 and lasted less than two years. The accommodation buildings, which were similar in their conception, stood on one-storey high concrete pillars. In all, they contained 1,348 apartments. The site was also unusual in that it was crossed by an elevated roadway leading to the *Ponte Flaminio*. Specifically for the Games period, the organisers set up temporary facilities such as a welcome centre, buildings used as restaurants and other utilitarian buildings. The Village also had facilities to address the athletes' health and recreation, such as an infirmary, shops, a club and an open-air cinema.

While the women had separate quarters, the various services and the restaurants were communal.



### AFTER THE GAMES

The Village was converted into a residential area, which still exists today.

## Additional Villages and accommodation sites

As well as the accommodation in Naples (see below), athletes competing at venues outside Rome could use the facilities there. In Pratoni del Vivaro, one of the equestrian event venues around 35km from the Italian capital, 120 beds were available. In Castelgandolfo, where the rowing competitions were held, the participants could eat and have access to the rooms at a designated religious institute, with which the organisers had signed an agreement.

NAPLES	
<b>Use:</b> Participants in the football and sailing events	<b>Capacity:</b> n/a
<b>Description:</b> Hotels provided accommodation for the teams.	

### DID YOU KNOW?

- The streets of the main Village are still named after the different teams or famous names in sport, like the via Chile, via Finlandia, via India, via Nedo Nadi and viale Pietro de Coubertin.







## Tokyo 1964

MAIN VILLAGE	
<b>Location:</b>	Yoyogi Park, Shibuya ward, Tokyo
<b>Type of infrastructure:</b>	Existing and new
<b>Architect:</b>	n/a
<b>Capacity:</b>	8,868 people
<b>Surface area:</b>	66 hectares, of which 12,000m <sup>2</sup> was for buildings.
<b>Athlete accommodation:</b>	543 wooden houses with one or two floors, and 14 reinforced concrete buildings with four floors
<b>Opening and closing dates:</b>	15.09. – 5.11.1964



Find out more about [Tokyo 1964](http://olympic.org/Tokyo1964) on olympic.org.

### Concept and services:

The main Olympic Village was on part of the site then known as Washington Heights. The site, which then housed American army personnel and their families, was returned to the Japanese at the end of 1963. To turn it into the Olympic Village, the existing buildings were reused and modified, and new facilities were built.

The Village included two dining halls, a club, baths, a service centre with a post office, bank, telephone centre, shopping centre, theatre, clinic, two heated 25m swimming pools and other sports facilities, including a 400m athletics track and a training ground. Four of the reinforced concrete buildings were used for the women's quarters, which had a separate dining room, club and baths.

The entertainment offered to the Village residents drew on Japanese traditions and art, such as tea ceremonies, ikebana (flower arranging) and origami (art of paper-folding).

**AFTER THE GAMES**

The main Village was destroyed to make way for Yoyogi Park. According to the *Tokyo Metropolitan Park Association*, just one house remains in the Park today for commemorative purposes. It was the one where the Dutch athletes likely stayed.

**Additional Villages and accommodation sites**

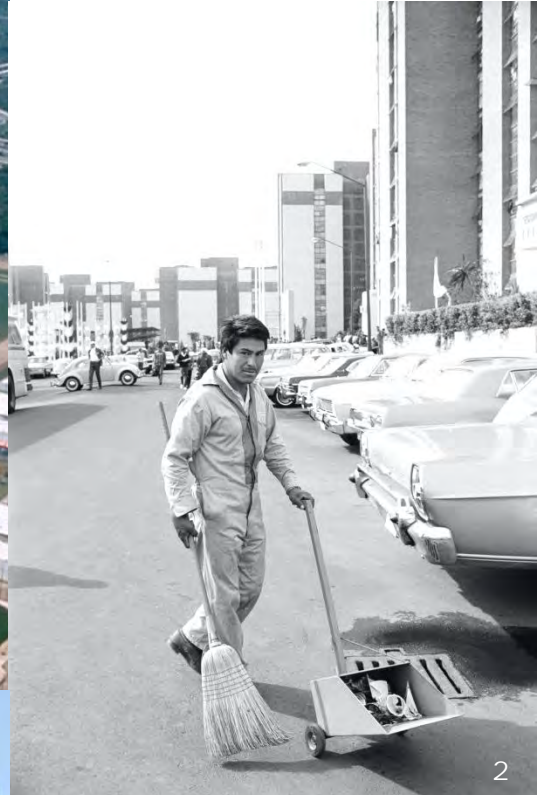
The organisers originally intended to have only two additional accommodation sites, one in Karuizawa, the other in Oiso. However, due to the very long transport time between the competition venues concerned and the main Village at Yoyogi, they decided to create two other villages, at Hachioji and Lake Sagami.

The auxiliary villages offered all the standard services such as a post office, bank, shops, hairdresser and dining hall. The residents of these villages were also free to use the facilities at the main Village in Yoyogi by using a system of shuttle buses.

HACHIOJI		
<b>Use:</b>	Participants in the cycling events	<b>Capacity:</b> 484 people
<b>Description:</b>	Two accommodation sites were created, the first right next to the velodrome, the other in a youth hostel 4.7km away.	
LAKE SAGAMI		
<b>Use:</b>	Participants in the canoeing events	<b>Capacity:</b> 316 people
<b>Description:</b>	The women were housed in a youth hostel, and the men in three other buildings.	
KARUIZAWA		
<b>Use:</b>	Participants in the three-day event	<b>Capacity:</b> ~200 people
<b>Description:</b>	A hotel provided the accommodation.	
OISO		
<b>Use:</b>	Participants in the sailing events	<b>Capacity:</b> 347 people
<b>Description:</b>	The village consisted of a local hotel plus a nearby building built specially for the occasion. The distance between Enoshima harbour and the hotel was around 20km.	

**DID YOU KNOW?**

- In 1998, Karuizawa hosted Olympic competitors for the second time. After equestrian events in 1964, it hosted the curling competitions for the Winter Games in Nagano and provided accommodation for the participants.





## Mexico City 1968

### MAIN VILLAGE

<b>Location:</b>	<i>Colonia</i> Villa Olímpica, Delegation de Tlalpan, Mexico City
<b>Type of infrastructure:</b>	New
<b>Architect:</b>	Héctor Velázquez Moreno
<b>Capacity:</b>	~10,000 people
<b>Surface area:</b>	11 hectares
<b>Athlete accommodation:</b>	27 buildings with six or 10 floors
<b>Opening and closing dates:</b>	12.09. – 7.11.1968

Find out more about [Mexico City 1968](https://olympic.org/mexico-city-1968) on olympic.org.



### Concept and services:

The village was built to the south of the city, around four kilometres from the Olympic Stadium. The building work started in May 1967 and ended in September 1968. On 17 September, a few days after the first occupants arrived, it was officially opened in the presence of the Mexican President, Gustavo Díaz Ordaz.

The village consisted of 29 buildings with a total of 904 apartments. Three of the buildings are reserved for the women and two for the press. The facilities included two clinics, a press centre, a multi-faith chapel and six restaurants, which served a total of 849,447 meals. The Village also had recreational and training facilities for the athletes, including a swimming pool, two gyms, an open-air theatre, an athletics track and an "International Club", which included an 800-seat auditorium. Traditional dance displays were organised there for the residents.



### AFTER THE GAMES

The Village was transformed into a residential area. Over the years, the sports centre in the Village has become one of the biggest in the southern part of the city.

## Additional Villages and accommodation sites

ACAPULCO	
<b>Use:</b> Participants in the sailing events	<b>Capacity:</b> 503 people
<b>Description:</b> A local hotel was used to house the sailing competitors.	
AVÁNDARO	
<b>Use:</b> Participants in the three-day event	<b>Capacity:</b> 139 people
<b>Description:</b> The motel of the local golf club was used to provide the accommodation.	
PUEBLA, LEÓN, GUADALAJARA	
<b>Use:</b> Participants in the football tournament	<b>Capacity:</b> n/a
<b>Description:</b> The athletes stayed in hotels.	

### DID YOU KNOW?

- Work on the site of the main Olympic Village revealed remains of pre-Colombian pyramids which are part of the archaeological site of Cuicuilco. Other archaeological items were also found during the work, and these were displayed to the Village residents in a small museum created in the International Club.





## Munich 1972

MAIN VILLAGE	
<b>Location:</b>	Milbertshofen-Am Hart district / Am Riesenfeld, Munich
<b>Type of infrastructure:</b>	New
<b>Architects:</b>	Heinle, Wischer & Associates / Ludwig, Wiegand, Zuleger / Eckert & Wirsing / Heinle, Wischer & Associates / Christ & Karg / Miller & Luz
<b>Capacity:</b>	~12,000 people
<b>Surface area:</b>	~80 hectares
<b>Athlete accommodation:</b>	~1,940 apartments ranging from 1½ to 4½ rooms and ~2,780 studios
<b>Opening and closing dates:</b>	01.08 – 18.09.1972



Find out more about [Munich 1972](http://olympic.org/Munich1972) on olympic.org.

### Concept and services:

The Olympic Village was built a few hundred metres from the Olympic Park, on the Oberwiesenfeld site in the north part of the city. Before being turned into the Olympic Park, the site was occupied by an aerodrome. With a view of converting the Village after the Games, the organisers decided to use two types of buildings: two-storey “bungalow” studios for students, laid out in double rows; and buildings up to 20 storeys high, including terraced apartments, for sale. Construction of the Village took place between September 1969 and July 1972.

The Village was divided into three main zones: the men's Village in the terraced blocks, the women's Village composed mainly of the studios, and a central zone. It is in this central zone that the main services were housed, including an ecumenical centre, a leisure centre, shops, restaurants, cafés, a bank, post office, medical centre, hairdresser, pharmacy, laundry, sewing workshop and a cobbler. The Village also had its own gardens, which included a mini-golf course. Many recreational options were on offer, including traditional arts shows, plays and films. A shuttle system was in place to allow the occupants to move around the Village.

On 5 September 1972 between 4 and 5 a.m., men linked to the Black September group broke into the Village, marking the start of the tragic hostage crisis which led to the death of 11 members of the Israeli delegation and a police officer.



### AFTER THE GAMES

The Village became a residential area. The “bungalow” studios used for the female athletes’ zone are used as student accommodation.

## Additional Villages and accommodation sites

KIEL			
<b>Use:</b>	Participants in the sailing events	<b>Capacity:</b>	~700 people
<b>Description:</b>	The sailing competitions were held in Kiel, a city situated , on the Baltic Sea almost 700km from Munich in the north of Germany. Situated next to the harbour, the Olympic Village consisted of two buildings, 32 bungalows and 24 studios. It had a dining room, leisure centre, health centre, swimming pool, baths and saunas, sports facilities and a reception and information area. One of the bungalows was used as an area for contemplation.		

### DID YOU KNOW?

- The main Village in Munich was criss-crossed by a 1.6km system of coloured tubes, called Media Lines. These tubes carried the heating and cooling system for the buildings, and also the cabling for lighting and telecommunications. The different colours also helped the residents to find their way around. They were the work of architect Hans Hollein.







## Montreal 1976

MAIN VILLAGE	
<b>Location:</b>	Rue Sherbrooke Est, Rosemont-La Petite-Patrie, Montreal
<b>Type of infrastructure:</b>	New
<b>Architects:</b>	Roger d'Astous and Luc Durand
<b>Capacity:</b>	~11,000 people
<b>Surface area:</b>	34 hectares
<b>Athlete accommodation:</b>	Four 19-storey "semi-pyramids" containing 980 apartments
<b>Opening and closing dates:</b>	23.06.1976 – n/a



Find out more about [Montreal 1976](http://olympic.org/Montreal1976) on olympic.org.

### Concept and services:

The Olympic Village was located 800m north-west of the Olympic Stadium, in the eastern part of the city. One of the four semi-pyramids used to house the athletes was reserved for women. The four pyramids acted as an architectural barrier between a huge park open to the athletes on one side and the lively Rue Sherbrooke and the Olympic park on the other.

In addition to the permanent Village, the organisers built temporary structures (cafeterias and offices) for the period of the Games.

With a view to ensuring quiet conditions, most of the accommodation was on the upper floors of the buildings, while the communal and administrative services, such as catering, recreation, offices and medical services, were on the lower floors. This split between communal and private activities was a key aspect of the Village's compact design.

Numerous services and entertainment possibilities were provided for the athletes, including a 3,000-seat restaurant open continuously, a range of shows and films, the possibility of following the competitions live on television, a swimming pool, a religious centre for different faiths, a flea market and shops selling things like jeans or First Nations craft products.

Within the Village perimeter, press interview rooms and conference rooms allowed journalists to meet the team members.



### AFTER THE GAMES

As originally planned, the Village became a residential area, which it still is today.

## Additional Villages and accommodation sites

BROMONT	
<b>Use:</b> Participants in the equestrian events	<b>Capacity:</b> ~500 people
<b>Description:</b> The city of Bromont is 72km from Montreal. The athletes and their teams were accommodated in 52 apartments in four buildings.	
KINGSTON	
<b>Use:</b> Participants in the sailing events	<b>Capacity:</b> ~500 people
<b>Description:</b> Kingston is 290km from Montreal. Queen's University student halls provided the accommodation.	

### DID YOU KNOW?

- As many National Olympic Committees had not returned the registration forms in time, they had to wait a long time when they arrived before their accommodation was allocated to them. Fortunately, clowns were on hand to entertain those waiting and lighten the atmosphere.
- To help their guests to feel at home, the organisers used children's drawings on Olympic topics to decorate the rooms.
- Queen Elizabeth II ate with the athletes at the Village during a visit. Like them, she ate from a paper plate and used plastic cutlery.





## Moscow 1980

### MAIN VILLAGE

<b>Location:</b>	South-west of Moscow, on Michurinsky Avenue
<b>Type of infrastructure:</b>	New
<b>Architects:</b>	Workshop 15 of the Mosproekt-1 design institute
<b>Capacity:</b>	~14,000 people
<b>Surface area:</b>	107 hectares
<b>Athlete accommodation:</b>	18 16-storey buildings. Apartments with two or three bedrooms
<b>Opening and closing dates:</b>	27.06. – 10.08.1980

Find out more about [Moscow 1980](http://olympic.org/Moscow1980) on olympic.org.



### Concept and services:

The site of the Olympic Village, originally a piece of waste ground, was around 10 kilometres from the Olympic Stadium in the south-west part of the city. The Organising Committee defined its location in collaboration with the city architects, with a view to creating a whole new neighbourhood in line with Moscow's urban development plans. As well as its closeness to the competition venues, the absence of any form of industry, the clean air and the large amounts of vegetation were all important criteria in this choice of location. Prefabricated sections were used to build the Village, which then sped up its realisation. The Organising Committee rented the newly created area from the city for the period of the Games.

The accommodation for the various nations' team members was concentrated between the second and 15<sup>th</sup> floors of each building. The first and top floors were reserved for offices and services. Two blocks were reserved for women. The Olympic Village included a sports centre with a swimming pool and training facilities for the majority of the sports disciplines, a polyclinic, a cultural centre offering films as well as shows and a religious centre. A plot of land by the Village was turned into a recreational area, with a cascade of ponds, trees, bridges and access to small boats on the nearby river. A 4,000-seat restaurant spread over four rooms was available to the residents. One of the rooms was open around the clock. A shuttle service was put in place for moving around the Village.

**AFTER THE GAMES**

Muscovites moved into the new residential area, which is still today known as the “Olympic Village”.

**Additional Villages and accommodation sites**

TALLINN <sup>7</sup>			
<b>Use:</b>	Participants in the sailing events	<b>Capacity:</b>	632 people
<b>Description:</b>	Tallinn is around 1,000km north-west of Moscow on the Baltic Sea. The Olympic Village for the sailing participants consisted of eight three-storey hotels offering 276 bedrooms.		
BITSA PARK			
<b>Use:</b>	Participants in the equestrian events	<b>Capacity:</b>	150 people
<b>Description:</b>	A hotel close to the equestrian centre south of the city served as the Olympic Village.		
KIEV, LENINGRAD <sup>8</sup> , MINSK			
<b>Use:</b>	Participants in the football tournament	<b>Capacity:</b>	160 people stayed in Minsk. No details are known for the other cities.
<b>Description:</b>	<ul style="list-style-type: none"><li>- In Kiev, the participants stayed at a hotel built just before the Games.</li><li>- In Leningrad, a hotel was built specially to house the teams close to the stadium used for the competitions and training.</li><li>- In Minsk, the athletes stayed in a hotel in the newly created Staiki Olympic Camp. The teams had access to indoor and outdoor training facilities and a medical centre.</li></ul>		

<sup>7</sup> Estonia (Tallinn), Ukraine (Kiev) and Belarus (Minsk) were part of the USSR in 1980.

<sup>8</sup> Today St Petersburg





## Los Angeles 1984

### MAIN VILLAGES

<b>Location:</b>	Campus of the University of Southern California (USC) and the University of California Los Angeles (UCLA), Los Angeles
<b>Type of infrastructure:</b>	Existing and new
<b>Architect:</b>	n/a
<b>Capacity:</b>	USC: ~7,000 people UCLA: ~3,700 people
<b>Surface area:</b>	USC: 20 hectares UCLA: 26 hectares
<b>Athlete accommodation:</b>	Bedrooms and university apartments
<b>Opening and closing dates:</b>	14.07. – 15.08.1984

Find out more about [Los Angeles 1984](http://olympic.org) on [olympic.org](http://olympic.org).



### Concept and services:

To keep costs down, the Organising Committee decided to use two university campuses for the main Olympic Villages.

On both sites, scaffolding was used to create arches and decorative towers to mark the perimeter of the Villages. Considerable effort also went into the Look of the Games elements, to create a feeling of continuity between the various parts of the Villages. Temporary structures were also used to create spaces to house some of the services, which were added to the existing student accommodation and restaurants.

Among other things, the athletes had access to a polyclinic, a small supermarket, a religious centre, a hairdressing salon, a beauty salon, a café, a bank, a post office, a call centre, a cinema, a swimming pool, a nightclub and rest areas. In addition, the university sports facilities allowed the athletes to train in the following sports: athletics, tennis, wrestling, swimming and gymnastics.

Where transport was concerned, the organisers focused initially on the links between the Villages and the competition venues. Subsequently, realising the need to make it easier to move around within the Villages, they added an electric golf cart service.

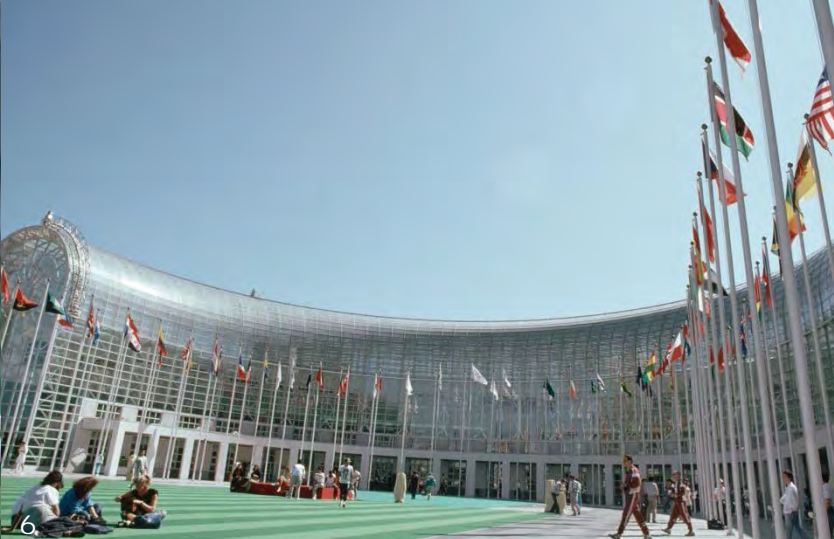


**AFTER THE GAMES**

The temporary structures were dismantled. The premises were returned to the students for the start of the new university term. On the USC site, only a two-storey brick dining hall built for the Games remained afterwards.

**Additional Villages and accommodation sites**

<b>SANTA BARBARA</b>	
<b>Use:</b>	Participants in the canoeing and rowing events
<b>Capacity:</b>	856 people
<b>Description:</b>	This Village was created to make it easier for the canoeing and rowing athletes to get to Lake Casitas. It was composed of three halls on the University of California, Santa Barbara (UCSB) campus, offering student bedrooms and a dining hall for 450 people. Temporary structures were also added to provide additional services so that it was identical to those offered in the two main Villages.
<b>CAMBRIDGE (Massachusetts), ANNAPOLIS (Maryland), PALO ALTO (California)</b>	
<b>Use:</b>	Participants in the football tournament
<b>Capacity:</b>	n/a
<b>Description:</b>	<ul style="list-style-type: none"> <li>- In Cambridge, the teams stayed in Quincy House on the campus of Harvard University.</li> <li>- In Annapolis, they stayed in a hotel.</li> <li>- In Palo Alto, they stayed in Branner Hall on the campus of Stanford University.</li> </ul>





## Seoul 1988

MAIN VILLAGE	
<b>Location:</b>	Oryun-dong quarter, in the Songpa-gu district, Seoul
<b>Type of infrastructure:</b>	New
<b>Architect:</b>	Whang Il-in and Woo Kyu-sung
<b>Capacity:</b>	15,000 people
<b>Surface area:</b>	50 hectares
<b>Athlete accommodation:</b>	3,692 apartments among 86 buildings
<b>Opening and closing dates:</b>	03.09 <sup>9</sup> . – 05.10.1988 <sup>10</sup>

Find out more about [Seoul 1988](#) on olympic.org.



### Concept and services:

The Village was in the shape of a semi-circle spreading out into a fan. Construction lasted 19 months, ending on 31 May 1988. The cultural and entertainment facilities, services and shops were in the international zone in the centre of the site. The residential zone, containing the athlete accommodation, was on the outside, where there was less noise.

The restaurant could hold up to 4,200 people on two floors, 24 hours a day. As well as the main restaurant, other services for the athletes included relaxation areas, a bank, a post office, a hairdresser, a sports equipment repair room, a laundry, a souvenir shop, a nightclub, a workshop selling original works by artists, a cinema, an electronic games room, an open-air theatre, a swimming pool, a sauna, a religious centre, an interpreting service and a photographic studio.

To reflect the culture of the country, a Korean exhibition was organised in an exhibition hall.

<sup>9</sup> Day of the official opening. Some athletes arrived earlier than expected, and entered the Village on 1 September.

<sup>10</sup> Day of the official closing, although some athletes stayed an extra night.

**AFTER THE GAMES**

The apartments in the Olympic Village were refurbished before being handed over to the city of Seoul at the end of December 1988 to become housing.

**Additional Villages and accommodation sites**

PUSAN		
<b>Use:</b>	Participants in the sailing and football events	<b>Capacity:</b> 630 people
<b>Description:</b>	The athletes stayed in two hotels in the city.	
TAEGU, KWANGJU, TAEJON		
<b>Use:</b>	Participants in the football tournament	<b>Capacity:</b> ~235 people
<b>Description:</b>	The teams stayed in hotels in each of the cities.	

**DID YOU KNOW?**

- A beauty contest was held shortly before the Village closed. The female participants paraded in their sportswear, official uniform and traditional costume. The winner of the Miss Olympic Village Pageant was Polish gymnast Teresa Folga.





## Barcelona 1992

MAIN VILLAGE	
<b>Location:</b>	Poblenou, Sant Martí district, Barcelona
<b>Type of infrastructure:</b>	New
<b>Architect:</b>	Josep Martorell, Oriol Bohigas, David Mackay, Josep Puigdomènech for the general design, and various architects for the different zones
<b>Capacity:</b>	~14,000 people
<b>Surface area:</b>	72 hectares
<b>Athlete accommodation:</b>	1,993 apartments
<b>Opening and closing dates:</b>	11.07. – 12.08.1992



Find out more about [Barcelona 1992](http://olympic.org/Barcelona1992) on olympic.org.

### Concept and services:

The Olympic Games were a catalyst for a general urban renovation programme which included the creation of the Olympic Main Village. In partnership with the developers who took over the area at the end of the Games, the Organising Committee created a new residential area to host the athletes during the Games. The area had the advantage of being close to the city centre and the competition venues, as well as being close to the sea. To provide architectural variety for the Village, and to avoid monotony and impersonality, several different architects worked on the design for it.

The Village had several restaurants, the largest of which had 3,500 places. In addition to the usual services like a small supermarket, nightclub, sports and religious centres and a cinema, it offered the athletes other services like a games lending library, a karaoke bar and a bowling alley. The organisers created 21 residents' centres, each of which could provide services to 680 athletes. The aim of having these small centres dispersed throughout the Village was to facilitate interaction with the athletes. These centres offered services such as a laundry, TV room, telephone booths, and a luggage storage and lost property office. They turned out to be popular meeting places, encouraging exchanges between the residents, who got into the habit of gathering there.



### AFTER THE GAMES

This seafront district was given over to the people of Barcelona, and turned into housing. Today, it features hotels, bars, restaurants, parks and other public facilities.

## Additional Villages and accommodation sites

Two additional villages were created to reduce the travelling needed for the athletes. The services offered were similar to those in the main Village.

LA SEU D'URGELL	
<b>Use:</b> Participants in the canoe slalom events	<b>Capacity:</b> 300 people
<b>Description:</b> La Seu d'Urgell is 178km from Barcelona. A school was used to provide accommodation for the athletes.	
BANYOLES	
<b>Use:</b> Participants in the rowing events	<b>Capacity:</b> 1,012 people
<b>Description:</b> The rowing competition venue is around 130km from Barcelona. A new building was constructed near the lake to house the athletes.	

### DID YOU KNOW?

- For the first time, the main Olympic Village was right by the sea. The athletes could thus make use of the beach.







## Atlanta 1996

MAIN VILLAGE		
<b>Location:</b>	Campus of the Georgia Institute of Technology, North Avenue NW, Atlanta	
<b>Type of infrastructure:</b>	Existing and new	
<b>Architect:</b>	n/a	
<b>Capacity:</b>	~15,000 people	
<b>Surface area:</b>	110 hectares	
<b>Athlete accommodation:</b>	Apartments and student accommodation	student student fraternity buildings
<b>Opening and closing dates:</b>	06.07. – 07.08.1996	

Find out more about [Atlanta 1996](http://olympic.org/Atlanta1996) on olympic.org.



### Concept and services:

The organisers chose the campus of the Georgia Institute of Technology (Georgia Tech), as this already had several facilities which matched their needs: accommodation, catering, entertainment, technical facilities and a training centre. In addition, the site had enough room to build new permanent buildings needed both for the Games and for developing the campus. The new student apartments built were in keeping with the existing architecture, and the existing halls were totally renovated. The organisers created the *Georgia Tech Plaza*, which served as a “town centre”, and included a fountain, meeting point and amphitheatre.

The main restaurant could seat 3,500 people. In addition, four other catering points were created, including one for outside guests. In an environmentally friendly gesture, the athletes were transported around inside the Village in little electric trains and buses.

The use of electronic services was developing, and a strong emphasis was placed on entertainment. The *Info'96* terminals installed around the site allowed the athletes to read and send emails, consult competition results, check the list of events in the Village and see the weather forecast. As well as the basic services, the Village offered a spa, a gym centre with lessons, a sense test centre, a laser tag arena and a *World Wide Web Pavilion*. There was also a strength training room, and a training centre for baseball, tennis and athletics.

**AFTER THE GAMES**

The campus was returned to the university and its students. The additional accommodation built for the Games has since benefited students at both Georgia Tech and Georgia State University, which is located nearby.

**Additional Villages and accommodation sites**

<b>ATHENS (Georgia)</b>		
<b>Use:</b>	Participants in the gymnastics, volleyball and football events	<b>Capacity:</b> 160 people
<b>Description:</b>	One of the University of Georgia student halls accommodated the athletes, who slept in twin bedrooms.	
<b>CLEVELAND (Ohio)</b>		
<b>Use:</b>	Participants in the canoe slalom events	<b>Capacity:</b> 201 people
<b>Description:</b>	Six buildings at Lee College housed the athletes. The village was 40km from the competition venue on the Ocoee River.	
<b>COLUMBUS (Ohio)</b>		
<b>Use:</b>	Participants in the softball tournament	<b>Capacity:</b> 170 people
<b>Description:</b>	The athletes had individual rooms in premises belonging to the US army.	
<b>SAVANNAH (Georgia)</b>		
<b>Use:</b>	Participants in the sailing events	<b>Capacity:</b> 682 people
<b>Description:</b>	The athletes stayed at a local hotel.	
<b>WASHINGTON DC, MIAMI (Florida), ORLANDO (Florida), BIRMINGHAM (Alabama)</b>		
<b>Use:</b>	Participants in the football tournaments	<b>Capacity:</b> n/a
<b>Description:</b>	<ul style="list-style-type: none"> <li>- In Washington DC, the athletes stayed at Mont Vernon College, in university halls and apartments.</li> <li>- In Miami, Nova Southeastern University in Fort Lauderdale hosted the athletes in student accommodation.</li> <li>- Orlando University accommodated the athletes in four-bedroom apartments.</li> <li>- In Birmingham, Alabama, the athletes stayed at Birmingham Southern College, in university halls and apartments.</li> </ul>	

**DID YOU KNOW?**

- For the first time at the Games, the athletes could elect some of their own number as members of the IOC Athletes' Commission. This election was held over 11 days in the main Olympic Village, and on specific dates at the other villages. Of the 35 candidates, the seven athletes who received the most votes were elected for a term of four years.





## Sydney 2000

MAIN VILLAGE	
<b>Location:</b>	Newington, Sydney
<b>Type of infrastructure:</b>	New
<b>Architect:</b>	Mirvac Lend Lease Village Consortium (MLLVC)
<b>Capacity:</b>	~15,300 people
<b>Surface area:</b>	84 hectares
<b>Athlete accommodation:</b>	350 apartments and 350 modular units in 520 houses
<b>Opening and closing dates:</b>	02.09. – 04.10.2000

Find out more about [Sydney 2000](http://olympic.org/Sydney2000) on olympic.org.



### Concept and services:

The Village was created around 20 kilometres west of the city centre. Environmental factors were at the core of the project: waste recycling, responsible use of water, carefully chosen construction materials, use of solar energy and environmentally friendly transport.

Apart from the football tournament, the Olympic Village was the only accommodation site for this edition of the Games. Thanks to its location close to the Olympic Park, the main competition venues could be reached on foot. The journey time to reach the competition venues furthest away did not exceed more than 40 minutes. Most of the athletes stayed in twin-bed rooms.

The athletes used the regular shuttle service inside the Village and used buses when going outside the Olympic Park. In addition to the main restaurant in the residential zone, the Village offered a wide range of fast food stands all over the site.

In addition to the usual services, the organisers tried to think of unusual activities, such as Australian-style bowls, chess tournaments or street entertainment. A surf shack was available. Twenty-two residents' centres were located around the Village, offering one-stop-shops for basic services such as laundry, ironing, TV rooms, post, lost keys, telephone, maintenance and information. Each centre could deal with the requests of several hundred athletes. In addition, there were four information stands to answer the residents' questions.



### AFTER THE GAMES

The new apartments and houses were sold or rented out. The Olympic Village was thus turned into a residential area for more than 5,000 people and was named *Newington*. Some of the modular units were converted after the Games, for example into schools or nurseries, to meet the needs of the new inhabitants.

## Additional Villages and accommodation sites

MELBOURNE, CANBERRA, BRISBANE, ADELAIDE	
<b>Use:</b> Participants in the football tournaments	<b>Capacity:</b> n/a
<b>Description:</b> In each of these cities, the athletes and team officials stayed in hotels.	

### DID YOU KNOW?

- The streets of the Sydney Olympic Village were named after Olympic and Paralympic athletes, and kept these names after the Games to recall what had happened there. So it is possible to live on Comaneci Avenue, visit a friend on Jordan Avenue or take your dog for a walk along Popov Avenue.





## Athens 2004

MAIN VILLAGE	
<b>Location:</b>	Municipality of Acharnes
<b>Type of infrastructure:</b>	New
<b>Architect:</b>	Architecture-Studio
<b>Capacity:</b>	17,000 people
<b>Surface area:</b>	124 hectares
<b>Athlete accommodation:</b>	366 blocks containing 2,292 apartments
<b>Opening and closing dates:</b>	30.07. <sup>11</sup> – 01.09.2004

Find out more about [Athens 2004](http://olympic.org) on [olympic.org](http://olympic.org).



### Concept and services:

The Greek Social Housing Association (OEK) was responsible for building a new residential area at the foot of Mount Parnitha in the municipality of Acharnes, 23km north of Athens. The Village was built with a view to creating social housing for more than 10,000 people once the Games were over. It was lent to the Organising Committee to house the athletes during the Games, before being handed back to the OEK. To create variety among the hundreds of buildings which made up the Village, the architects developed 19 different types of building.

There was a residents' centre for each apartment block, with each providing services for around 600 athletes. Two bigger centres, called *Athena* and *Phevos* like the Games mascots, offered additional services, such as video games rooms, a swimming pool, a massage centre, a rest area, snacks and laundry rooms.

The Village had two restaurants and cafes. The main restaurant had a capacity of 6,250 people. The secondary restaurant could hold 650 people, with reduced opening hours. As well as the usual services like a post office, bank, hairdresser, shops, the village also had a lost property office, three cybercafés, an amphitheatre and a reception hall.

A total of 350 buses transported the athletes to the 37 competition venues and the 58 other sites, such as training venues, the city centre or the airport. Some 4.2km of roads and 29 internal bus stops allowed the athletes to move around the huge village.

<sup>11</sup> Day of the official opening. The first teams arrived on 29 July.



### AFTER THE GAMES

Many families took part in a draw with a view to getting one of the apartments in this new neighbourhood. However, plans to build service infrastructure, such as primary and secondary schools and a hospital, were not implemented, and the shops in the area closed. The former Olympic Village is today under-occupied and has not fully achieved the objectives initially set for development in the area.

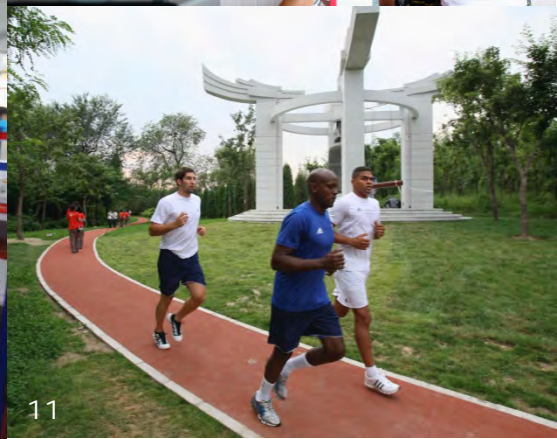
## Additional Villages and accommodation sites

HERAKLIO, PATRAS, THESSALONIKI, VOLOS	
<b>Use:</b> Participants in the football tournaments	<b>Capacity:</b> n/a
<b>Description:</b> The athletes stayed in hotels.	

### DID YOU KNOW?

- The cybercafés were so popular that the organisers had to extend the opening hours of one of them in response to the demand. This was in spite of the fact that, according to the organiser, the number of computers was apparently three times higher than at the previous Games.
- Archaeological remains, including Hadrian's aqueduct, were uncovered during construction of the Olympic Village. Although the area was completely redeveloped, the archaeological site was preserved and incorporated into the residential development.







## Beijing 2008

MAIN VILLAGE	
<b>Location:</b>	Olympic Green, Chaoyang district, Beijing
<b>Type of infrastructure:</b>	New
<b>Architect:</b>	Beijing Tianhong Yuanfang Architectural Design Co., Ltd
<b>Capacity:</b>	16,000 people
<b>Surface area:</b>	66 hectares
<b>Athlete accommodation:</b>	42 buildings, 3,276 apartments and 9,993 bedrooms
<b>Opening and closing dates:</b>	27.07. – 27.08.2008

Find out more about [Beijing 2008](http://Beijing 2008) on [olympic.org](http://olympic.org).



### Concept and services:

The design of the Village sought to combine architecture and culture. As such, as well as typically Chinese architectural features, environmentally friendly construction technology was used, such as LED lighting, permeable bricks to collect rainwater, waste water filtration using vegetation, and 6,000 square metres of solar panels for heating and hot water. The southern part of the Village accommodated the athletes, with the northern part reserved for activities such as sport, culture and entertainment.

Transport and logistics were organised in the operational zone. As at previous editions of the Games, residents' centres of varying sizes were available to help the athletes on a daily basis. The main restaurant could serve a variety of menus to 6,000 people at the same time. The athletes got to and from the training and competition venues by means of shuttle buses. Three shuttle routes and electric vehicles for journeys around the Village were available.

Particular attention was placed on emphasising the rich cultural history of China. As a result, the Village residents could attend traditional dance and singing shows, learn about the country's language and writing and follow Chinese handicraft classes.

**AFTER THE GAMES**

The northern part of the Village was incorporated into the surrounding parkland, the Olympic Forest Park. Some of the sites like the flag mall and peace square were turned into public areas to commemorate the Olympic past of the area. The buildings and facilities in the residential zone were turned into apartments and sold in 2009.

**Additional Villages and accommodation sites**

On a smaller scale, the villages in Qingdao and Hong Kong offered similar services to those in the main Village in Beijing.

QINGDAO		
<b>Use:</b>	Participants in the sailing events	<b>Capacity:</b> ~700 people
<b>Description:</b>	An Olympic Village was included in the newly built sailing centre. The Village was 10 minutes on foot from the competition venue.	
HONG KONG		
<b>Use:</b>	Participants in the equestrian events	<b>Capacity:</b> ~450 people
<b>Description:</b>	The participants stayed in a hotel located two and 15 kilometres respectively from the <i>Sha Tin</i> and <i>Beas River</i> competition venues.	
TIANJIN, SHANGHAI, SHENYANG, QINHUANGDAO		
<b>Use:</b>	Participants in the football tournaments	<b>Capacity:</b> n/a
<b>Description:</b>	The teams stayed in hotels in each of these cities.	

**DID YOU KNOW?**

- Different regions of China were represented through the fittings and decoration of the residential zone. A wooden portico at the entrance to one of the zones recalled the classical style of the south-west of the country. Another zone resembled a garden suggesting the bridges and streams of the south-east. The architecture of a third zone copied the white mountains set against blue water in the north-east of China.





## London 2012

MAIN VILLAGE	
<b>Location:</b>	Stratford, in the borough of Newham
<b>Type of infrastructure:</b>	New
<b>Architects:</b>	The architecture practices for the various aspects of the Village were chosen by the Olympic Delivery Authority and Lend Lease, in partnership with the Architecture Foundation. <sup>12</sup>
<b>Capacity:</b>	~17,000 people
<b>Surface area:</b>	~37 hectares
<b>Athlete accommodation:</b>	11 residential blocks of 63 buildings and 2,818 units representing more than 250,000 m <sup>2</sup>
<b>Opening and closing dates:</b>	16.07. – 15.08.2012



Find out more about [London 2012](http://London2012.org) on [olympic.org](http://olympic.org).

### Concept and services:

The Village was next to the Olympic Park, and its construction was part of the desire to rehabilitate this part of the city under the impetus of the Games. With its buildings surrounding inner courtyards, the architectural design recalled a London tradition. The Village was designed to be compact, and having different architects involved resulted in a variety of styles and approaches. Around 10 hectares of green areas, like the inner courtyards and the central park, provided relaxation areas for the Village residents. Work began in 2008, and 16,500 people were involved. This included covering a 400-metre stretch of railway track running across the site and building three bridges 44 metres above nearby railway lines to connect the Village with the rest of the urban area.

Some of the infrastructure was temporary and dismantled after the Games, such as the main 5,000-seat restaurant, which offered a choice of 1,300 dishes, or the leisure centre. Among the many services offered by the Village, there was a fitness centre covering over 1,200m<sup>2</sup> with a team of around 100 personal trainers and more than 750 items of equipment, an outdoor jogging track with lawns and ponds and “grab-and-go” baskets of energy snacks. With the sculptures on display in and around the Village, art had a prominent role, something also shown by the 20-or-so troupes of entertainers who put on shows in the Village streets each day.

<sup>12</sup> The architect firms included: Allford Hall Monaghan Morris, CF Moller, Denton Corker Marshall, De Rijke Marsh, Morgan, DSDHA Eric Parry Architects, Glenn Howells, Lifschutz Davidson Sandilands, Niall McLaughlin, Panter Hudspith, Patel Taylor, Penoyre Prasad, Piercy Connor. Additional designers: Arup (Infrastructure), Vogt Landscape Architects and Applied Landscape Design, with the support of Fletcher Priest (public domain).



### AFTER THE GAMES

The development of the Village into a new residential area with excellent connections was one of the key legacies of the Games in London. Renamed East Village, it includes shops, cafés and restaurants, recreational areas and a school, the Chobham Academy. The building used as the polyclinic during the Games is still a health centre, benefiting the local community. It is named after Sir Ludwig Guttmann, the founder of the Paralympic Games.

## Additional Villages and accommodation sites

EGHAM		
<b>Use:</b>	Participants in the rowing and canoe sprint events	<b>Capacity:</b> 1,300 people
<b>Description:</b>	The participants were accommodated on the campus of the Royal Holloway University of London, a few kilometres from the competition venue at Dorney Lake.	
PORTLAND		
<b>Use:</b>	Participants in the sailing events	<b>Capacity:</b> 500 people
<b>Description:</b>	On the Isle of Portland, the Village consisted of 77 residential houses eight minutes from the competition venue. Among other things, the athletes had access to a main dining hall and a service centre. The organisers identified the site while it was still under construction, and rented it for the Games. After the Games, the houses were offered for sale.	
CARDIFF, COVENTRY, GLASGOW, MANCHESTER, NEWCASTLE		
<b>Use:</b>	Participants in the football tournaments	<b>Capacity:</b> n/a
<b>Description:</b>	In each of these cities, the teams stayed in two hotels. The players taking part in matches in London stayed at the Olympic Village.	

### DID YOU KNOW?

- The welcome ceremonies for the teams when they arrived in the Village were a show in themselves. The artistic performance was by young players from the National Youth Theatre of Great Britain. The national anthems were arranged by composer Philip Sheppard, and 36 musicians of the London Philharmonic Orchestra spent 50 hours recording them.





## Rio 2016

MAIN VILLAGE	
<b>Location:</b>	Barra da Tijuca, Rio de Janeiro
<b>Type of infrastructure:</b>	New
<b>Architect:</b>	n/a
<b>Capacity:</b>	~18,000 people expected
<b>Surface area:</b>	75 hectares
<b>Athlete accommodation:</b>	31 buildings, 3,604 apartments and 10,160 bedrooms
<b>Opening and closing dates:</b>	24.07. – 24.08.2016

Find out more about [Rio 2016](http://Rio2016.org) on [olympic.org](http://olympic.org).



### Concept and services:

The Olympic Village is on the coast at Barra, one of the four Games sites in Rio. It consists of 31 buildings divided into seven sectors.

The Rua Carioca walkway separates the residential zone from the Olympic Village Plaza which groups together the services and entertainments available to the athletes. The site will include a main restaurant with 5,000 seats open 24 hours a day. There will also be fast food stands around the Village with some of them offering Brazilian specialities. A training centre was built next to the Village to allow the athletes to complete their physical preparation in the best possible conditions.

The athletes will have an internal shuttle service linking all the main parts of the Village.



**AFTER THE GAMES**

It is planned to convert the Olympic Village into accommodation after the Games.

**Additional Villages and accommodation sites**

MANAUS, SÃO PAULO, BRASILIA, BELO HORIZONTE, SALVADOR	
<b>Use:</b>	Participants in the football tournaments
<b>Capacity:</b>	n/a
<b>Description:</b>	Hotels will provide the accommodation. The players of the teams whose matches will be in Rio will stay in the Olympic Village.

**DID YOU KNOW?**

- An expressway, the *Transolímpica*, has been built for cars and high speed bus services to speed up travel between the Barra site, where the Village is located, and the Deodoro site to the north of the city. This road includes two tunnels and is 23km long. The construction of this new road is part of the general programme to improve the transport system in Rio.
- The athletes will have access to a beach reserved just for them, a 10-minute walk away.
- The Organising Committee asked former athletes to help choose the furniture in the apartments. As a result, the doors are 10 centimetres wider than the Brazilian standard, the showers are 2.2m high and the beds can be extended to 2.2m in length using a separate part.
- 10,000 people will be needed to operate the Olympic Village each day during the Games.
- Young fans under 18 years of age from around the world are given the possibility to participate in the decoration of the Olympic Village's bedrooms. A contest launched through the Rio 2016 OCOG's official mobile app invites fans to share photos that best illustrate the spirit of the Olympic Games Rio 2016, the first to be staged in South America. The winning photos will be selected by the Organising Committee to embellish the Village.



## Sources

### Introduction

- Jordi Carbonell, "The Barcelona'92 Olympic Village", *Olympic Villages, Hundred Years of Urban Planning and Shared Experiences*, Miquel de Moragas, Montserrat Llinés and Bruce Kidd [ed.], International Symposium on Olympic Villages Lausanne 1996, IOC, 1997, [pp. 141](#).
- *Les jeux de la VIIIe Olympiade Paris 1924: rapport officiel*, Comité olympique français, Paris: Librairie de France, 1924, [p. 60](#).
- Ludwig Drees, *Olympia, Gods, Artists and Athletes*, London: Pall Mall Press, 1967, p. 43.
- Nicholas Yalouris, "The City of Elis. The Primordial Olympic Village", *Olympic Villages, Hundred Years of Urban Planning and Shared Experiences*, Miquel de Moragas, Montserrat Llinés and Bruce Kidd [ed.], International Symposium on Olympic Villages Lausanne 1996, IOC, 1997, [pp. 23-26](#).
- *Statuts du Comité International Olympique, Règlements et protocole de la célébration des Olympiades modernes et des Jeux Olympiques quadriennaux, Règles générales techniques applicables à la célébration de la VIIIe Olympiade Paris 1924*, Lausanne: IOC, ca 1924, [p. 21](#).
- *The Ninth Olympiad being the Official Report of the Olympic Games of 1928 celebrated at Amsterdam*, G. Van Rossem [ed.], Netherlands Olympic Committee (Committee 1928), Amsterdam: J. H. De Bussy n.d., [pp. 108, 191](#).
- *The Official Report of the Organising Committee for the XIV Olympiad*, London: The Organising Committee for the XIV Olympiad London, 1951, [p. 143](#).
- *VI Olympiske Vinterleker Oslo 1952 - VI Olympic Winter Games Oslo 1952*, Rolf Petersen, Organising Committee for the Olympic Winter Games in Oslo in 1952, Oslo : Organisasjonskomiteen, ca. 1953, [p. 81](#).

### Paris 1924

- *Les jeux de la VIIIe Olympiade Paris 1924: rapport officiel*, Comité olympique français, Paris: Librairie de France, 1924, [pp. 51, 60-61, 799-800](#).
- "Logement à Paris (Copie d'une lettre du Comité Olympique Français)", *Bulletin officiel du Comité Olympique Suisse (C.O.S.)*, An I de la VIII<sup>me</sup> Olympiade, n.7, April 1924, pp. 8-9.
- Robert M. Thompson, *Report on VIII Olympiad, Paris, France, 1924, to Calvin Coolidge and to the American Olympic Association*, s.l., s.n., n.d., pp. 9, 90.

### Los Angeles 1932

- "1932 Olympic Village Gone, But Housing Still In Use", *The Blade*, Toledo, Ohio, 149<sup>th</sup> year, Monday 16 July 1984, [p. 14](#).
- Jeremy White, "The Los Angeles way of doing things", *Olympika: The International Journal of Olympic Studies*, Volume XI, 2002, [pp. 92-93](#).
- *The Games of the Xth Olympiad Los Angeles 1932: Official Report*, Los Angeles: The Xth Olympiad Committee of the Games of Los Angeles, 1933, [p. 157, pp. 187-190, p. 235-296](#).

### Berlin 1936

- *Olympic Games News Service*, Berlin: Organising Committee, n.20, 2<sup>nd</sup> of July 1935, p. 2.
- Martin Kaule, *Olympiastadion Berlin und Olympisches Dorf Elstal*, Berlin: Ch. Links Verlag, 2014, pp.57-60.
- *The XIth Olympic Games Berlin, 1936: Official Report*, Berlin: W. Limpert, 1937, [vol.1, pp. 47, 50, 56, 79, 166-248](#).
- Werner Gärtner, *The Olympic village: guide to Olympic dwellings: plan, construction, administration, village organization: homes for lady competitors, the Comradeship House, Reich Sport Field: for oarsmen, at Koepenick, the Schloss and other buildings: for yachtsmen, at Kiel*, Organizing Committee for the XI<sup>th</sup> Olympiad Berlin 1936, 1936, pp. 8-25.
- W. Fürstner, "Le village olympique", *Jeux Olympiques 1936, Organe officiel de la XI<sup>e</sup> Olympiade à Berlin en 1936 et de la IV<sup>e</sup> Olympiade d'hiver à Garmisch-Partenkirchen*, Berlin: Buch- und Tiefdruck Gesellschaft, n.9, n.d., pp. 9-13.

### Helsinki 1952

- "A new Olympic Village will be erected beside the old one", Official News-Service: XV Olympiad, Helsinki: Organising Committee for the Helsinki Games 1952, n.5, October 1950, p. 6.
- "New Olympic Village under construction", Official News-Service: XV Olympiad, Helsinki: Organising Committee for the Helsinki Games 1952, n.6, December 1950, p. 3.
- "The Helsinki Nursing School – Women athletes' living quarters", Official News-Service: XV Olympiad, Helsinki: Organising Committee for the Helsinki Games 1952, n.11, November 1951, p. 4.
- *The official report of the Organising Committee for the Games of the XV Olympiad*, Sulo Kolka [ed.], Porvoo; Helsinki: W. Söderström, 1955, [pp. 84-102](#).

### Melbourne 1956

---

Most recent update: March 2016



- “[Brief History](#)”, website of the Heidelberg United Football Club.
- Geoffrey Ballard, *Nation with nation: the story of Olympic Village Heidelberg Olympic Games Melbourne 1956*, Spectrum Publ., 1997, pp. 54, 57, 142-145, 177.
- “[Heidelberg West Neighbourhood Renewal – changing lives and a community](#)”, website of the Banyule City Council.
- *The official report of the Organizing Committee for the Games of the XVI Olympiad Melbourne 1956*, Melbourne: Organizing Committee for the Games of the XVI Olympiad, 1958, [pp. 121-137](#).

#### Stockholm 1956

- “Stockholm - Jeux équestres de la XVIe Olympiade 10-17 juin 1956”, *Bulletin du Comité International Olympique*, [n.54, May 1956, p. 22](#).
- *The Official Report of the Organizing Committee for the Equestrian Games of the XVIth Olympiad: Stockholm 1956*, [s.n.], 1959, [pp. 25-31](#).

#### Rome 1960

- Bruno Personè et al., *Villaggio Olimpico, quartiere di Roma - Olympic Village, quarter of Rome - Village olympique, quartier de Rome*, Rome: Istituto Nazionale Case Impiegati Statali (INCIS), 1960, pp.9, 16, 22, 26 & n.p.
- “Duration of the Olympic Village”, *Bulletin officiel, Games of the XVII Olympiad 25.VIII – 11.IX – MCMLX – Roma*, n.10, July-August 1959, p. 9.
- *The Games of the XVII Olympiad Rome, 1960: the official report of the Organising Committee*, Rome: Organising Committee for the Games of the XVII Olympiad, 1963, [vol. 1, pp. 89-93, 164-167, 223-295](#).
- *The sports venues / Games of the XVII Olympiad*, Rome: Games of the XVII Olympiad Press Services Section, 1960, pp. 11-12.

#### Tokyo 1964

- *The XVIII Olympic Winter Games: official report Nagano 1998*, Nagano: The organizing committee for the XVIII Olympic Winter Games Nagano 1998, 1999, [vol. 2, p. 250](#).
- *The games of the XVIII olympiad, Tokyo 1964: the official report of the Organising Committee*, Tokyo: The Organising Committee for the Games of the XVIII Olympiad, 1966, [vol. 1, pp. 281-352](#).
- “[代々木公園 - 見どころ](#)”, website of the Tokyo Metropolitan Park Association.

#### Mexico 1968

- “[Deportivo Villa Olímpica](#)”, website of the Secretaría de Turismo del Gobierno del Distrito Federal.
- “Inauguration officielle des installations”, *Mexico 1968: bulletin d’information*, Mexico: Organising Committee for the Games of the XIX Olympiad, n.83, p. 38.
- “La construction du village olympique est commencée”, *Mexico 1968: bulletin d’information*, Mexico: Organising Committee for the Games of the XIX Olympiad, n.21, pp. 2-4.
- *Mexico 68*, Mexico: Organising Committee of the Games of the XIX Olympiad, 1969, [vol. 2, pp. 246-65](#), [vol. 4, pp. 627-30](#).

#### Munich 1972

- *Bulletin: Official report by the Organizing Committee on the preparations for the Games of the XXth Olympiad Munich 1972*, n.7, June 1972, p. 16.
- *Die Spiele: the official report of the Organizing Committee for the Games of the XXth Olympiad Munich 1972*, Munich: Prosport, 1974, [vol.1, pp. 124-141, 150](#), [vol.2, pp. 98, 100-111](#).
- Henning Bath [réd.], *Village olympique - Olympic village - Olympisches Dorf*, Munich: Organising Committee for the Games of the XX<sup>th</sup> Olympiad Munich, n.d., pp. 7, 25.
- “[Media Linien Olympisches Dorf](#)”, website of Hans Hollein.

#### Montreal 1976

- *Guide to Olympic Village*, OCOG 1976, 1976. p. 8, p. 38, p. 82.
- “Les boutiques du Village accommodent toutes les bourses”, *Le Village: Official information paper of the Olympic Village*, n.20, 20<sup>th</sup> July 1976, n.p.
- *Montreal 1976: Games of the XXI Olympiad Montreal 1976: official report*, Ottawa: OCOG 1976, 1978, [vol. 1, pp. 258-279](#), [vol. 2, pp.196-201, pp. 222-225](#).
- “Montreal 76”, *Olympic Review*, n.82-83, September - October 1974, [pp. 415-417](#).
- “Royal Family Enjoys Lunch Cafeteria-style”, *Le Village: Official information paper of the Olympic Village*, n.19, 19<sup>th</sup> July 1976, n.p.

#### Moscow 1980

- *Official Report of the Organising Committee of the Games of the XXII Olympiad, Moscow 1980*, Moscow: OCOG-80, 1981, [vol. 1, pp. 158, 190, 234](#), [vol. 2, pp. 132-135, pp. 307-332](#).



- Chrovina, V., *Olympic Village, Athletes Handbook*, Moscow: Fizkultura i sport, 1980. pp. 18-20, p. 25, pp. 32-57.

#### Los Angeles 1984

- *Athlete's Village Guide: Games of the XXIIIrd Olympiad Los Angeles 1984*, Los Angeles : LAOOC, pp. 32-37.
- *Official Report of the Games of the XXIIIrd Olympiad Los Angeles 1984*, Los Angeles: LAOOC, 1985, [vol. 1, pp. 161-185, pp. 368-388](#).
- Richard B. Perelman [ed.], *Olympic Retrospective: the Games of Los Angeles*, Los Angeles: LAOOC, 1985, p. 596.

#### Seoul 1988

- *Games of the 24th Olympiad Seoul 1988: the Abridged Official Report*, Seoul: SOOC, 1989, pp. 474-497.
- *Games of the XXIVth Olympiad Seoul 1988: Olympic Village*, Seoul: SOOC, 1988, pp.4-5, p. 34.
- *Guide du village olympique*, Seoul: SOOC, n.d, pp.3 & 9.
- "Operations Plan Moves Into Action", *Olympic Update*, vol. 2, n.2, March-April 1988, SOOC, 1988, pp. 1-3.
- *Official Report: Games of the XXIVth Olympiad Seoul 1988*, Seoul: SOOC, 1989, [vol. 1, pp. 527-570](#).
- *Séoul 1988 : Guide de la XXIVème Olympiade*, Seoul: SOOC, 1988, pp. 18-19.

#### Barcelona 1992

- "COOB'92 Has Already Taken Possession of 1,245 Flats in the Olympic Village to Prepare Them for the Games", BCN'92 Newsletter, 13<sup>th</sup> of January 1992, Barcelona: COOB'92, 1992, n.p.
- *Guía preliminar de la Villa Olímpica, Marzo de 1990*, Barcelona: COOB'92, 1990, pp. 5-9, pp. 26-27.
- *Official Report of the Games of the XXV Olympiad Barcelona 1992*, Barcelona: COOB'92, 1992, [vol. 3, pp. 183-201, vol. 4, pp. 329-345](#).
- "Olympic Village Apartments Handed Over to COOB'92", BCN'92 Newsletter, 24th of February 1992, Barcelona: COOB'92, 1992, n.p.
- *Services Guide: Athletes*, Barcelona: COOB'92, 1992, pp. 15-17, pp. 23-45.
- "The Master Builders of Barcelona", *Olympic Review*, n.287, September 1991, [pp. 436-438](#).
- "[What to visit / Interesting Districts: Vila Olímpica](#)" website of Barcelona Turisme.

#### Atlanta 1996

- "Athletes Elect Athletes", *Olympic Review*, n.XXVI-10, August-September 1996, [p. 19](#).
- *Atlanta Olympic Village Athletes Guide*, Atlanta: ACOG, 1996, pp. 17-20, pp. 35-43.
- "Questions? Ask Info'96!", *Daily Olympian*, 13<sup>th</sup> July 1996, Atlanta: ACOG, 1996, p. 2.
- "Satellite Villages Help Host the World", *Daily Olympian*, 15<sup>th</sup> July 1996, Atlanta: ACOG, 1996, p. 7.
- *The Official Report of the Centennial Olympic Games*, Atlanta: Peachtree Publishers for ACOG, 1997, [vol.1, pp. 324-350](#).

#### Sydney 2000

- "A Catering Challenge of Olympic Proportions", *Olympic Village Newspaper*, n.1, 2<sup>nd</sup> September 2000, Sydney: SOCOG, 2000, n.p.
- *Media Guide: Sydney 2000 Olympic Games, September 2000*, Sydney: SOCOG, 2000, pp. 53-55.
- *Official Report of the XXVII Olympiad: Sydney 2000 Olympic Games, 15 September – 1 October*, Sydney: SOCOG, 2001, [vol. 1, pp. 68-70, pp. 323-331](#).
- "Surf's Up in the Shack As Waves Of Mail Roll In", *Olympic Village Newspaper*, n.3, 4<sup>th</sup> September 2000, Sydney: SOCOG, 2000, n.p.

#### Athens 2004

- *Athletes Guide: Athens 2004 Olympic Games*, Athens: ATHOC, 2004, pp. 8-13.
- "[Greece's Olympic dream has turned into a nightmare for Village residents](#)", *The Telegraph* online, 23rd June 2011.
- *Info Kit September 2003: Athens 2004*, Athens: ATHOC, 2003, pp. 83-84.
- *Olympic Village Guide*, Athens: ATHOC, 2004. pp. 21-23, pp. 37-47.
- *Official Report of the XXVIII Olympiad: Athens 2004*, Athens: ATHOC, 2005, [vol. 1, p. 161, vol. 2, pp. 41-49](#).
- "[Projects 2004: Athens Olympic Village](#)", Architecture Studio website.
- "[Struggling to survive, Greece's Olympic villagers ponder referendum choice](#)" *English RFI* online, 5th July 2015.
- "The Legacy", *Olympic Review*, n.49, October – November - December 2003, [pp. 49](#).
- "The Olympic Village", *Athens 2004: Olympic News*, n.2, p. 15.

#### Beijing 2008

- *Athletes Guide Beijing 2008*, Beijing: BOCOG, 2008, pp. 7-14, p. 121.
- *Hong Kong Grooms Village*, Hong Kong: The Equestrian Committee (Hong Kong) of Beijing Organizing Committee for the Games of the XXIX Olympiad, 2008, n.p.



- *Official Report of the Beijing 2008 Olympic Games*, Beijing: BOCOG, 2010, [vol. 2, pp. 211-225](#), [vol. 3, pp. 227-241](#).
- “[Projects](#)”, Beijing Tianhong Yuanfang Architectural Design CO., LTD website.

#### London 2012

- [2012 Olympic Village](#), case study, Acheson Construction Ltd website.
- “[East Village](#)”, site de Lendlease.
- *London 2012 Olympic Games: the official report*, London: LOCOG, 2013, [vol.3, pp.50-52](#).
- “London 2012 unveils essential Games-time services and facilities at the Olympic and Paralympic Athletes’ Village”, news, 29 June 2012, official website London 2012.
- *Olympic Football Hotels Guide*, London: LOCOG, 2012, [pp. 7-8](#).
- *Olympic Rowing and Canoe Sprint Village Guide*, London: LOCOG, 2012, [pp. 5-7](#).
- *Olympic Sailing Village Guide*, London : LOCOG, 2012, [p. 4-5](#).
- *Olympic Village Guide*, London: LOCOG, 2012, [pp. 9-11](#).
- “Seal of approval for Olympic and Paralympic Village at final Athletes’ Committee meeting”, news, 15 May 2012, official website London 2012.
- *Stratford London Official Guide*, The London Borough of Newham’s Economic Regeneration Team, June 2014, [p.85](#).
- *Village Life*, London: LOCOG 2012, [n.4, 28.07, p.6](#) and [n.11, 04.08, p.3, n.17, 10.08, p.6](#).

#### Rio 2016

- “[Construction of Rio 2016 Olympic and Paralympic Village 50 per cent complete](#)”, news, 17 September 2014, Rio 2016 official website.
- “[Detonation marks start of construction work on Transolímpica tunnel, which will connect Deodoro to Barra](#)”, news, 11 November 2013, Rio 2016 official website.
- “[New images of the future Rio 2016 Olympic and Paralympic village are disclosed](#)”, news, 21 September 2015, Rio 2016 official website.
- *NOC Chefs de Mission Dossier Rio 2016*, Rio: Organizing Committee for the Olympic and Paralympic Games Rio 2016, June 2015, [pp. 55-56, pp. 78-95, pp. 101-105](#).
- *Olympic and Paralympic Village: Rio 2016*, Rio: Organizing Committee for the Olympic and Paralympic Games Rio 2016, 2011, n.p.
- *Rapport d’avancement Rio 2016: 128e session du CIO Kuala Lumpur*, Rio: Organizing Committee for the Olympic and Paralympic Games Rio 2016, August 2015, [p. 17](#).
- “[Rio 2016 celebrates 500 days until first athletes arrive at Olympic and Paralympic Village](#)”, news, 12th March 2015, Rio 2016 official website.
- “Live and Learn”, *Olympic Review*, n.85, October-November-December 2012, [pp. 70-71](#).



## Images

**Paris 1924:** Page 6: **1)** A street in the Olympic Village - © 1924 / IOC **2)** View of the Olympic Village under construction - © 1924 / IOC Page 7: Athletes from the Japanese delegation (JPN) at the Olympic Village - © 1924 / IOC

**Los Angeles 1932:** Page 8: **1)** Aerial view of the Olympic Village - © 1932 / IOC **2)** A member of staff at the hospital in the Olympic Village - © 1932 / IOC **3)** The laundry service at the Olympic Village supervised by the general housekeeper - © 1932 / IOC **4)** Barbecue at the Olympic Village - © 1932 / IOC **5)** Auction of equipment at the Olympic Village - © 1932 / IOC **6)** The Australian delegation eating a meal - © 1932 / IOC **7)** Participants from the Philippines (PHI) in front of their house at the Olympic Village - © 1932 / IOC **8)** A competitor training at the Olympic Village - © 1932 / IOC **9)** The Chapman Park Hotel where the female athletes stayed - © 1932 / IOC **10)** The post office building at the Olympic Village - © 1932 / IOC **11)** Arrival of the German team at the Olympic Village - © 1932 / IOC Page 9: Entrance to the Olympic Village - © 1932 / IOC

**Berlin 1936:** Page 11: **1)** Aerial view of the Olympic Village with the dining room building on the right, and the main entrance at the top on the left - © 1936 / IOC **2)** Glenn Hardin (USA) training at the Olympic Village - © 1936 / IOC/ Lothar Rübelt **3)** The Danish team's house at the Olympic Village - © 1936 / IOC **4)** The entrance to the Village - © 1936 / IOC / H. Kutschera **5)** The sauna by the lake - © 1936 / IOC **6)** Athletes at the window - © 1936 / IOC **7)** Massage session at the Village infirmary - © 1936 / IOC **8)** Fencing training in the Village - © 1936 / IOC **9)** Members of the Swiss team eating - © 1936 / IOC **10)** Two Japanese athletes in the gardens of the women's accommodation - © 1936 / IOC **11)** The "Olympia-Heim" (Olympic House) built to accommodate the participants in the sailing competitions in Kiel - © 1936 / IOC Page 12: Fanfare outside the Village dining block - © 1936 / IOC

**Helsinki 1952:** Page 14: **1)** View of the Olympic Village buildings - © 1952 / IOC **2)** Two athletes from the Soviet Union (URS) with US athlete Bob Clotworthy - © 1952 / IOC / United Archives **3)** Members of the Swiss delegation: the secretary, Jean Weymann, and the treasurer on the left - © 1952 / IOC **4)** Pedro Landero and Rodrigo del Rosario (PHI) (right) with two basketball players, Frank McCabe and Bob Kurland (USA), at the Olympic Village - © 1952 / IOC **5)** A woman at the Olympic Village - © 1952 / IOC **6)** Gymnasts from the Swiss team at the Olympic Village: Hans Eugster, Jack Günthard, Melchior Thalmann, Ernst Fivian and Hans Schwarzenruber - © 1952 / IOC **7)** Wrestlers Yushi Kitano, Shohachi Ishii, Risaburo Tominaga and Takeo Shimotori (JPN) training at the Olympic Village - © 1952 / IOC / United Archives **8)** Sigfrid Edström, IOC President, and Erik von Frenckell, Organising Committee President, visit the Olympic Village - © 1952 / IOC **9)** Athlete Ayako Yoshikawa (JPN) trains at the Olympic Village - © 1952 / IOC / United Archives **10)** The Swiss delegation (SUI) at the Olympic Village - © 1952 / IOC **11)** The Australian team during the flag-raising ceremony at the Olympic Village - © 1952 / IOC / United Archives Page 15: The German team is welcomed at the village (photo above), view of the Olympic Village (photo below)

**Melbourne/Stockholm 1956:** Page 17: **1)** Athletes at the Olympic Village in Melbourne © 1956 / IOC / United Archives **2)** Members of the US delegation at the Olympic Village in Melbourne (USA) - © 1956 / IOC / United Archives **3)** Pole vault training at the Olympic Village in Melbourne, Robert Richard (USA) © 1956 / IOC **4)** The Unified Team of Germany at the Olympic Village in Melbourne © 1956 / IOC **5)** The Näsby naval college in Täby, to the north of Stockholm (unknown date) © IOC **6)** Karlberg Castle in Solna near Stockholm (unknown date) © IOC Page 18: Official poster for the 1956 Olympic Games in Melbourne © 1956 / IOC Page 20: Official poster for the 1956 Equestrian Games in Stockholm © 1956 / IOC

**Rome 1960:** Page 21: **1)** Japanese weightlifter (JPN) © 1960 / IOC **2)** General view of the Olympic Village © 1960 / IOC **3)** Official opening of the Village on 25 July 1960 in the presence of Giulio Andreotti, President of the Organising Committee, and Giulio Onesti, Chairman of the Executive Committee - © 1960 / IOC **4)** Soldiers working in the Olympic Village - © 1960 / IOC **5)** Arrival of the British delegation at the Olympic Village - © 1960 / IOC **6)** Official souvenir stand for athletes at the Olympic Village - © 1960 / IOC **7)** Official souvenir stand for athletes at the Olympic Village - © 1960 / IOC **8)** Night-time view of the Olympic Village - © 1960 / IOC **9)** One of the Olympic Village restaurants - © 1960 / IOC **10)** A building in the Olympic Village - © 1960 / IOC **11)** A group of hostesses at the welcome centre in the Olympic Village - © 1960 / IOC Page 22: Building on the *Via Svizzera* at the Olympic Village - © 1960 / IOC

**Tokyo 1964:** Page 24: **1)** Aerial view of the Olympic Main Village in Yoyogi with, in the background, the National Gymnasium (aquatics) and its annexe (basketball) - © 1964 / Kishimoto / IOC **2)** Beauty salon - © 1964 / Kishimoto / IOC **3)** Athletes on bikes - © 1964 / Kishimoto / IOC **4)** Dance hall - © 1964 / Kishimoto / IOC **5)** Yoshinobu Miyake (JPN) reads the newspaper with other Japanese athletes - © 1964 / Kishimoto / IOC **6)** Sado (tea ceremony) - © 1964 / Kishimoto / IOC **7)** Athletes making music - © 1964 / Kishimoto / IOC **8)** Athletes getting into the buses for the Opening Ceremony - © 1964 / Kishimoto / IOC **9)** The team from the Republic of Korea (KOR) with their luggage - © 1964 / Kishimoto / IOC **10)** An athlete hangs out his washing - © 1964 / Kishimoto / IOC Page 25: General view of the Olympic Village - © 1964 / IOC

**Mexico City 1968:** Page 27: **1)** Aerial view of the Olympic Village - © 1968 / IOC **2)** Cleaning the streets - © 1968 / Kishimoto / IOC **3)** Restaurant - © 1968 / Kishimoto / IOC **4)** Athletes at the Olympic Village - © 1968 / Kishimoto / IOC **5)** A Japanese athlete (JPN) in his bedroom - © 1968 / Kishimoto / IOC **6)** Swimming pool - © 1968 / Kishimoto / IOC **7)** Shuttle bus for the athletes - © 1968 / Kishimoto / IOC **8)** Bank - © 1968 / Kishimoto / IOC **9)** Volunteers wearing the Games uniforms - © 1968 / Kishimoto / IOC **10)** Training venue at the Olympic Village - © 1968 / Kishimoto / IOC Page 28: Portrait of Miguel Hidalgo - © 1968 / Kishimoto / IOC

**Munich 1972:** Page 30: **1)** Aerial view of the Olympic Main Village in Munich - © 1972 / Kishimoto / IOC **2)** Mexican dance show at the Village in Munich - © 1972 / Kishimoto / IOC **3)** Athletes at the village in Munich - © 1972 / Kishimoto / IOC **4)** Chess at the Olympic Village - © 1972 / Kishimoto / IOC **5)** Athletes watching television - © 1972 / Kishimoto / IOC **6)** A souvenir shop - © 1972 / Kishimoto / IOC **7)** A restaurant - © 1972 / Kishimoto / IOC **8)** Indian tea stand - © 1972 / Kishimoto / IOC **9)** Visit by Lord Killanin to the Olympic Village in Kiel where the sailing competitions were held - © 1972 / IOC Page 31: View of the Olympic Village in Munich with, in the background, the "media lines" by architect Hans Hollein - © 1972 / Kishimoto / IOC

Most recent update: March 2016



**Montreal 1976:** Page 33: **1)** View of the four semi-pyramids which made up the Olympic Village - © 1976 / COJO Montreal **2)** Kenyan athletes wait for the bus - © 1976/ IOC / United Archives **3)** The terrace - © 1976/ IOC / United Archives **4)** Athletes watch a show at the Village - © 1976 / IOC **5)** National flags in the Village - © 1976/ IOC / United Archives **6)** General view of the dining hall - © 1976 / IOC **7)** Athletes training - © 1976/ IOC Page 34: The Olympic Village seen from a balcony - © 1976 / COJO Montreal 1976

**Moscow 1980:** Page 36: **1)** View of the Olympic Village - © 1980 / IOC **2)** Ethiopian athletes warm up at the Olympic Village - © 1980 / IOC **3)** Athletes eating in the dining hall - © 1980 / IOC **4)** Athletes chatting in the Olympic Village - © 1980 / IOC **5)** A shared musical moment at the Village - © 1980 / IOC **6)** Arrival of the Romanian women's gymnastics team - © 1980 / Sygma / Patrick Habans **7)** View of the buildings and green areas - © 2016 **8)** Arrival of the athletes' luggage - © 1980 / IOC Page 37: View of the Olympic Village buildings - © 1980 / IOC

**Los Angeles 1984:** Page 39: **1)** Swiss athletes at the Olympic Village - © 1984 / IOC / Jean-François Pahud **2)** Entrance to the Village - © 2002 / IOC **3)** Electric vehicle - © 2002 / IOC **4)** Mag and bag checks for athletes and visitors - © 1984 / EPA / DPA / Frank Leonhardt **5)** Dietmar Mögenburg (FRG) lifting weights at the Olympic Village - © 1984 / Deutsche Presse Agentur / Werner Baum **6)** Michael Gross (FRG) relaxes before his event - © 1984 / Deutsche Presse Agentur **7)** Café and discothèque on the stands of the stadium at the UCLA Village - © 2002 / IOC **8)** Bedroom at the Olympic Village - © 1984 / IOC **9)** Pertti Karppinen and Arto Harkonen (FIN) at the Olympic Village cutting a cake - © 1984 / Deutsche Presse Agentur Page 40: Scaffolding tower showing the Los Angeles 1984 look of the Games - © 2002 / IOC

**Seoul 1988:** Page 42: **1)** View of the Athletes' Hall, the Flag Plaza and other buildings - © 1988 / IOC/ Jean-Jacques Strahm **2)** A young athlete on the phone at the Olympic Village - © 1988 / IOC **3)** Athletes queuing at the dining hall - © 1988 / IOC / Jean-Jacques Strahm **4)** Soviet athletes playing pool at the Athletes' Centre - © 1988 / IOC **5)** Discussion at the Olympic Village - © 1988 / IOC / Jean-Jacques Strahm **6)** Flag Plaza and Athletes' Hall - © 1988 / IOC / Jean-Jacques Strahm **7)** Discussion at the Olympic Village - © 1988 / IOC / Jean-Jacques Strahm **8)** Video games room in the Athletes' Hall - © 1988 / IOC / Jean-Jacques Strahm Page 43: View of the athletes' restaurant - © 1988 / IOC

**Barcelona 1992:** Page 45: **1)** View from the seafront - © 1992 / IOC **2)** Aerial view of part of the Village - © 1992 / COOB (Barcelona'92 Olympic Organising Committee) **3)** Arrival of the Kenyan team (KEN) - © 1992 / IOC / Jean-Jacques Strahm **4)** A young athlete on the phone - © 1992 / IOC / Jean-Jacques Strahm **5)** Pool room - © 1992 / IOC / Jean-Jacques Strahm **6)** Pool in the Olympic Village at Banyoles - © 1992 / IOC / Jean-Jacques Strahm **7)** Video games room at the Olympic Village - © 1992 / IOC **8)** Nathalie Wunderlich (SUI) and Eva Gysling (SUI) with mascot Cobi on the seafront - © 1992 / IOC **9)** Architectural element - © 1992 / IOC / Jean-Jacques Strahm **10)** Architecture - © 1992 / IOC / Jean-Jacques Strahm **11)** An athlete speaks to the media - © 1992 / IOC / Jean-Jacques Strahm Page 46: The Olympic Village architecture - © 1992 / IOC / Jean-Jacques Strahm

**Atlanta 1996:** Page 48: **1)** Teams eating at the cafeteria - © 1996 / IOC / Marcel Imsand **2)** The entrance to the Olympic Village - © 1996 / IOC / Marcel Imsand **3)** View of the Georgia Tech Plaza - © 1996 / IOC / Marcel Imsand **4)** British athletes (GBR) using the Internet - © 1996 / IOC / John Gichigi **5)** An athlete reads on a bench - © 1996 / IOC / Giulio Locatelli **6)** Athletes taking advantage of the swimming pool - © 1996 / IOC / Giulio Locatelli **7)** View of a residential building - © 1996 / Atlanta Committee for the Olympic Games / M. Suriani **8)** Little electric train - © 1996 / IOC / Giulio Locatelli **9)** A volunteer asks Danish athletes (DEN) for an autograph - © 1996 / IOC / John Gichigi Page 49: View of a building in the Olympic Village - © 1996 / Atlanta Committee for the Olympic Games

**Sydney 2000:** Page 51: **1)** View of the Village, with the Olympic Stadium in the background - © Getty **2)** Athletes reading emails from their fans - © 2000 / IOC / Giulio Locatelli **3)** Aborigines in traditional clothing - © 2000 / IOC / Giulio Locatelli **4)** Two Brazilian athletes (BRA) using the phone boxes - © 2000 / IOC / An IOC staff member **5)** An Australian aborigine teaching two athletes (USA) to play the didgeridoo - © 2000 / IOC / Matthew King **6)** The teams' flags at the Olympic Village - © 2000 / IOC / Giulio Locatelli **7)** Two volunteers at the village - © 2000 / IOC / Jean-François Pahud **8)** Athletes chatting in a park in the Village - © 2000 / IOC / Giulio Locatelli **9)** Atmosphere at the Olympic Village, departure of a bus - © 2000 / IOC / Jean-François Pahud **10)** General view of the dining hall - © 2000 / IOC / An IOC staff member Page 52: A building in the Olympic Village - © 2000 / IOC / Giulio Locatelli

**Athens 2004:** Page 54: **1)** Selection of fruit in the dining hall - © 2004 / Kishimoto / IOC / Takamitsu Mifune **2)** Buildings of the Olympic Village - © 2004 / Kishimoto / IOC / Takamitsu Mifune **3)** The florist - © 2004 / Kishimoto / IOC / Yo Nagaya **4)** Participant in the swimming pool - © 2004 / IOC / Michalis Sourlis **5)** The Olympic Village dining hall - © 2004 / Kishimoto / IOC / Takamitsu Mifune **6)** Reception office - © 2004 / Kishimoto / IOC / Yo Nagaya **7)** Ceremony to welcome the team from Eritrea (ERI) at the Village - © 2004 / Kishimoto / IOC / Wataru Abe **8)** Arrival of the delegations, internet room - © 2004 / Kishimoto / IOC / Takamitsu Mifune Page 55: The entrance to the Olympic Village - © 2004 / IOC / An IOC staff member

**Beijing 2008:** Page 57: **1)** View of the athletes' accommodation - © 2008 / IOC / Richard Juilliart **2)** A car transporting passengers to the bus park - © 2008 / IOC / Hélène Tobler **3)** The nations' flags at the Olympic Village - © 2008 / IOC / Ian Jones **4)** Athletes training in the swimming pool in the Village - © 2008 / IOC / John Gichigi **5)** A Chinese artist at work - © 2008 / IOC / Hélène Tobler **6)** View of the Olympic Village - © 2008 / IOC / John Gichigi **7)** Bedroom in the British team's (GBR) residence - © 2008 / IOC / John Gichigi **8)** Members of the German team relax by playing - © 2008 / IOC / Hélène Tobler **9)** View of the residential zone - © 2008 / IOC / John Gichigi **10)** Beijing 2008 shop in the Village - © 2008 / IOC / John Gichigi **11)** Athletes training on a running track - © 2008 / IOC / John Gichigi Page 58: Accommodation for the British team (GBR) - © 2008 / IOC / John Gichigi

**London 2012:** Page 60: **1)** Aerial view of the Olympic Village - © Getty **2)** Atmosphere in the streets of the Olympic Village with bicycles distributing "Innocent" drinks - © 2012 / IOC / Richard Juilliart **3)** An athlete in a scanner at the Olympic Village clinic - © 2012 / IOC / Jason Evans **4)** The Olympic Village being prepared - © 2011 / IOC **5)** Athletes being welcomed at the Olympic



Village, a street entertainer / IOC / Christopher Furlong **6)** “Coaches and Entourage Night” organised by the IOC with, on the stage, Mike Krzyzewski, a US basketball coach, Kobe Bryant, a US basketball player, and IOC member Angela Ruggiero (USA) - © 2012 / IOC / John Huet **7)** Recording studio at the Olympic Village - © 2012 / IOC / Greg Martin **8)** A bedroom in the Olympic Village - © 2012 / IOC / Ian Jones **9)** Volunteers busy at the accreditation and uniform distribution centre - © 2012 / IOC / Christopher Furlong **10)** “Jenga”-style game at the Olympic Village - © 2012 / IOC / Greg Martin **11)** Fitness centre at the Olympic Village - © 2012 / IOC / Christopher Lee **12)** An athlete adds his signature to the Truce Wall in the Olympic Village - © 2012 / IOC / David Burnett **13)** Panoramic view of the main restaurant in the Olympic Village - © 2012 / IOC / John Huet Page 61: View of the Canadian team’s residence at the Olympic Village - © 2012 / IOC / John Huet

**Rio 2016:** Page 63: **1)** View of the host city, Rio de Janeiro - © 2014 / Organising Committee for the Rio 2016 Olympic and Paralympic Games / Alex Ferro **2)** Aerial view of the Olympic Village - © Getty **3)** The Olympic Park in Barra under construction, with the Olympic Village on the left in the background - © 2014 / Organising Committee for the Rio 2016 Olympic and Paralympic Games / Alex Ferro Page 64: Aerial view of the Village, with Rio de Janeiro in the background - © Getty