

DAMAGE ASSESSMENT IN THE CITY OF BOR, JONGLEI STATE, SOUTH SUDAN

Analysis with WorldView-1 Data Acquired 15 January 2014 and WorldView-2 Data Acquired 25 December 2013

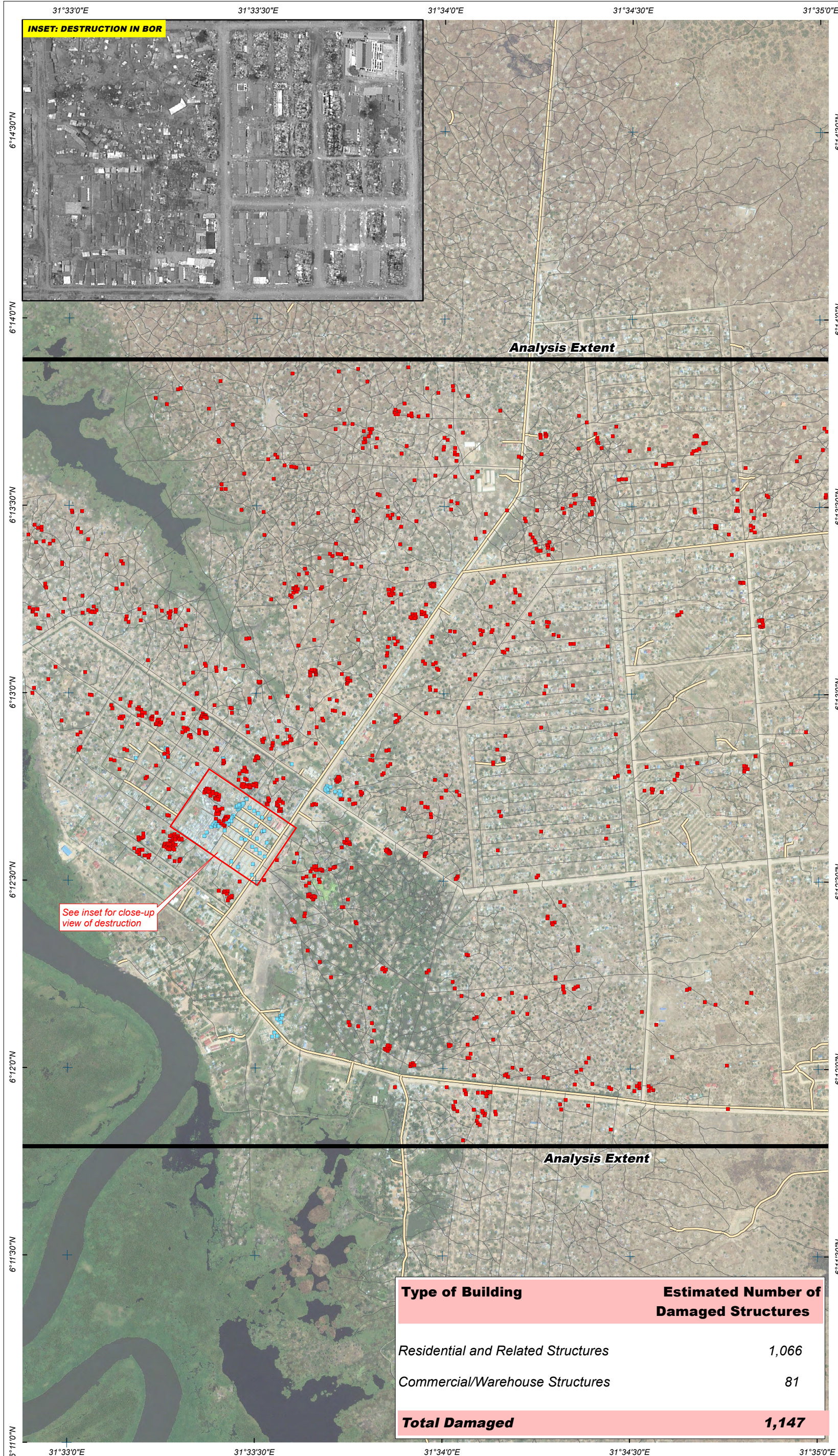
**Complex
Emergency**

Production Date:
17/01/2014

Version 1.0



Glide Number:
INSERT GLIDE NUMBER



This map illustrates satellite-detected areas of destruction in the town of Bor as seen by the WorldView-1 satellite on 15 January 2014. UNOSAT analyzed a portion of the town to verify reports of damage and determined that many structures were destroyed. A total of 1,066 destroyed residential and related structures and a total of 81 warehouse or commercial structures were identified throughout the area analyzed. However, due to the poor quality of the image analyzed UNOSAT was largely able to identify only those structures which were burned and thus may be underestimating overall levels of destruction. UNOSAT will revise and expand this analysis as soon as new imagery is available. This is a preliminary analysis & has not yet been validated in the field. Please send ground feedback to UNITAR / UNOSAT.

LEGEND

- Residential and Related Structures
- Commercial/Warehouse Structures
- Highway/Primary Road
- Secondary Road
- Local/Urban Road
- UNOSAT Analysis Extent

Map Scale for A3: 1:19,000

0 70 140 280 420 560 700 Meters

Satellite Data (1): WorldView-1
Imagery Dates: 15 January 2014
Resolution: 50 cm
Copyright: DigitalGlobe
Source: US Department of State, Humanitarian Information Unit, Next View License
Satellite Data (2): WorldView-2
Imagery Date: 25 December 2013
Copyright: Digitalglobe
Source: US Department of State, Humanitarian Information Unit, Next View License
Road Data : Google Map Maker / OSM / ESRI
Other Data: USGS, UNCS, NASA, NGA
Analysis : UNITAR / UNOSAT
Production: UNITAR / UNOSAT
Analysis conducted with ArcGIS v10

Coordinate System: WGS 1984 UTM Zone 36N
Projection: Transverse Mercator
Datum: WGS 1984
Units: Meter

The depiction and use of boundaries, geographic names and related data shown here are not warranted to be error-free nor do they imply official endorsement or acceptance by the United Nations. UNOSAT is a program of the United Nations Institute for Training and Research (UNITAR), providing satellite imagery and related geographic information, research and analysis to UN humanitarian and development agencies and their implementing partners.

This work by UNITAR/UNOSAT is licensed under a Creative Commons Attribution-NonCommercial-ShareAlike 3.0 Unported License.

UNOSAT

Contact Information: unosat@unitar.org
24/7 Hotline: +41 76 487 4998
www.unitar.org/unosat

Type of Building	Estimated Number of Damaged Structures
Residential and Related Structures	1,066
Commercial/Warehouse Structures	81
Total Damaged	1,147