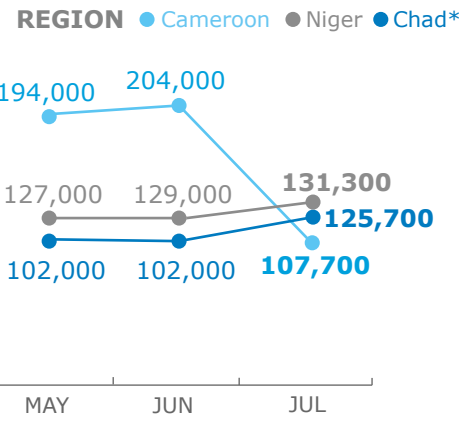
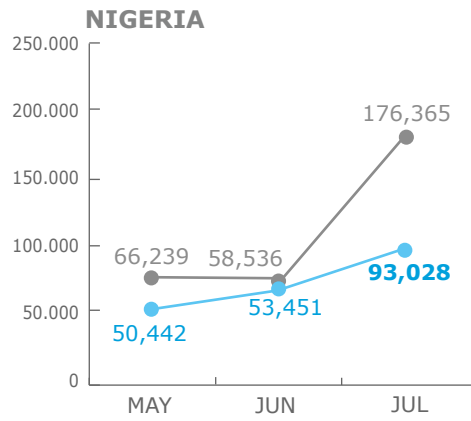


BENEFICIARIES

Reg. Emergency Operation 200777



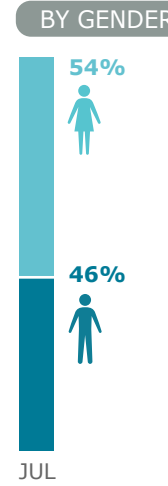
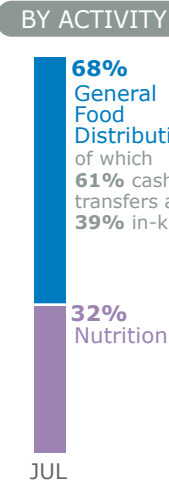
Planned ● Assisted (thousands)



*Chad also assists vulnerable people in the Lake Chad basin under PRRO (Protracted Relief & Recovery Operation) 200713

Source: WFP, 24 August 2016

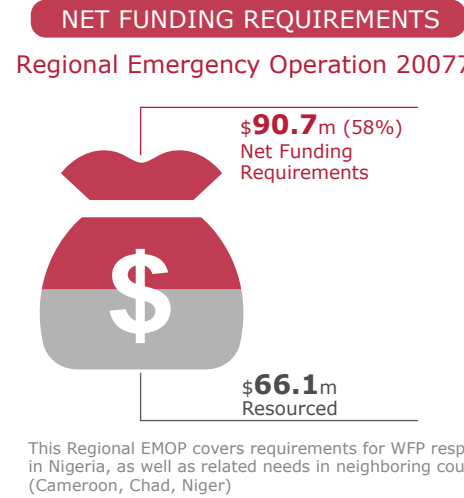
OPERATIONAL PROFILE



FUNDING

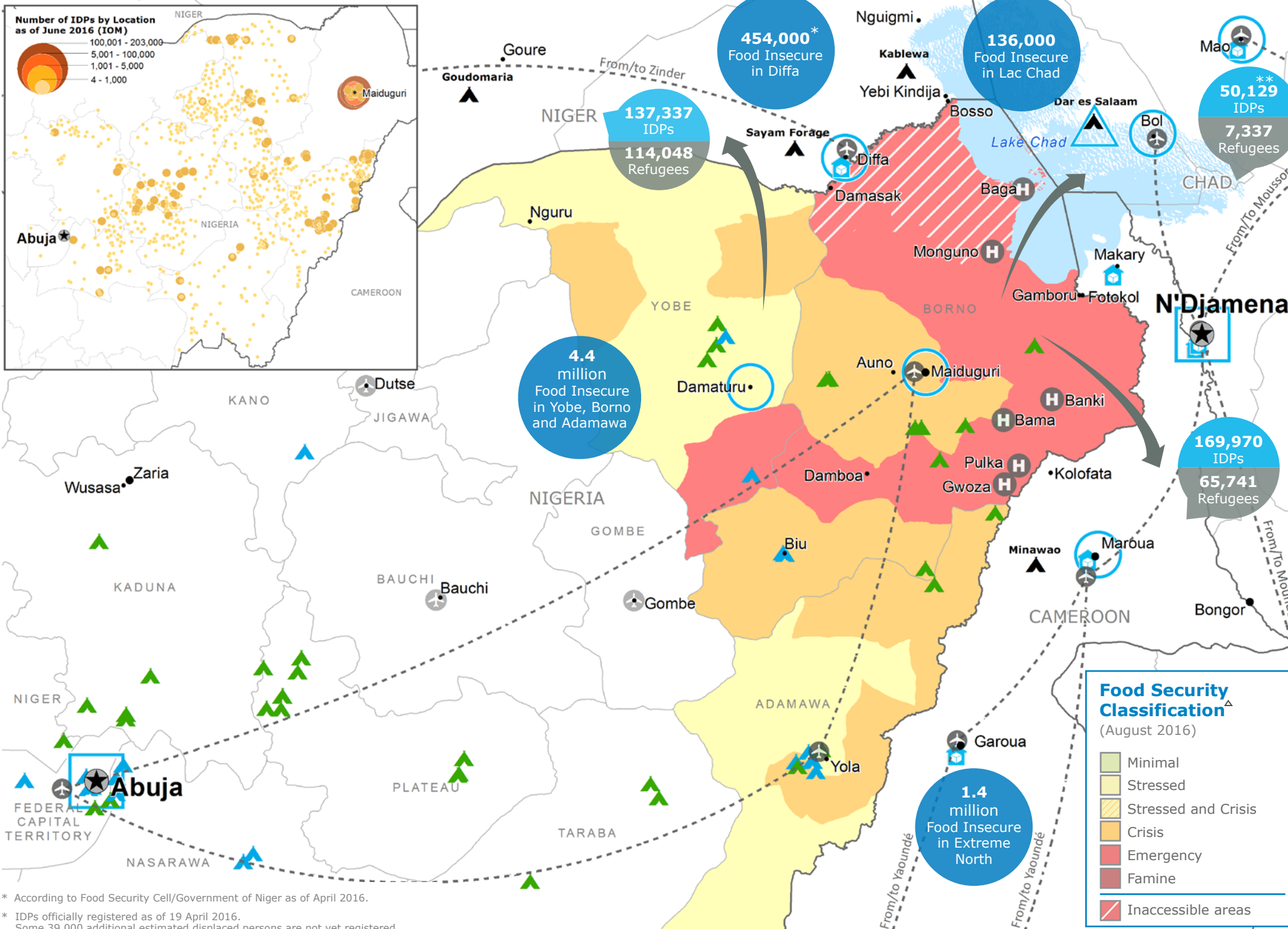
Aug 2016 - Jan 2017

\$156.8m: Six months Requirements



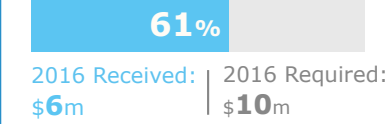
This Regional EMOP covers requirements for WFP response in Nigeria, as well as related needs in neighboring countries (Cameroon, Chad, Niger)

Source: WFP, 02 September 2016



2016 PROJECT RESOURCES: COMMON SERVICES

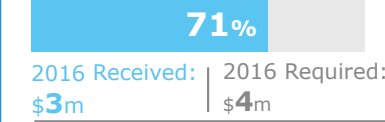
Special Operation 200834 (UNHAS NIGERIA)



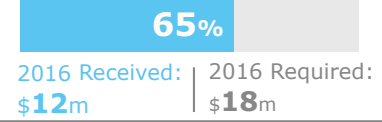
Special Operation 200792* (UNHAS NIGER)



Special Operation 200895* (UNHAS CAMEROON)

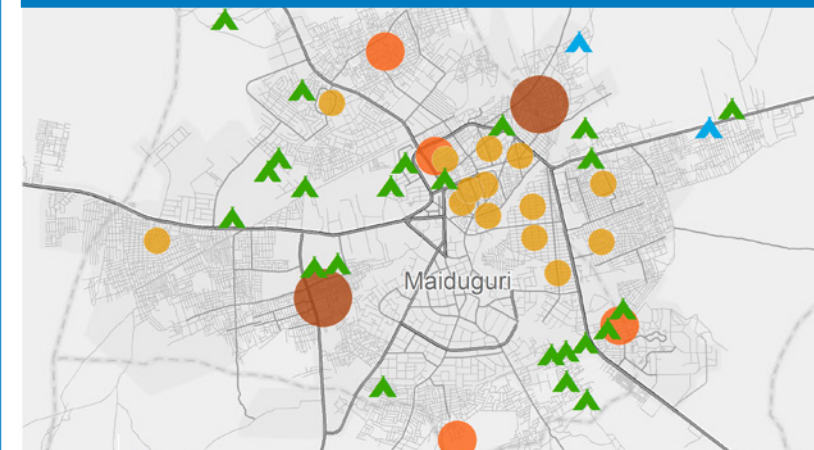


Special Operation 200785* (UNHAS CHAD)



Source: WFP, 28 August 2016

IDP CAMPS IN MAIDUGURI AREA



OPERATIONAL CHALLENGES	Insecurity	Humanitarian Access	Resources
	Economic Volatility	Limited Partners	

WFP LEVEL 3 EMERGENCY

SINCE 11 AUGUST 2016

Check the **SITUATION REPORT**

<http://www.wfp.org/countries/nigeria>

2A REGIONAL EMOP 200777

<http://documents.wfp.org/stellent/groups/public/documents/ep/WFP284303.pdf>

Produced by the WFP **Operations Centre (OPSCEN)** jointly with Country Office and Regional Bureau Dakar

This dashboard is based on best available information at the time of production. Future updates may vary as new information becomes available.