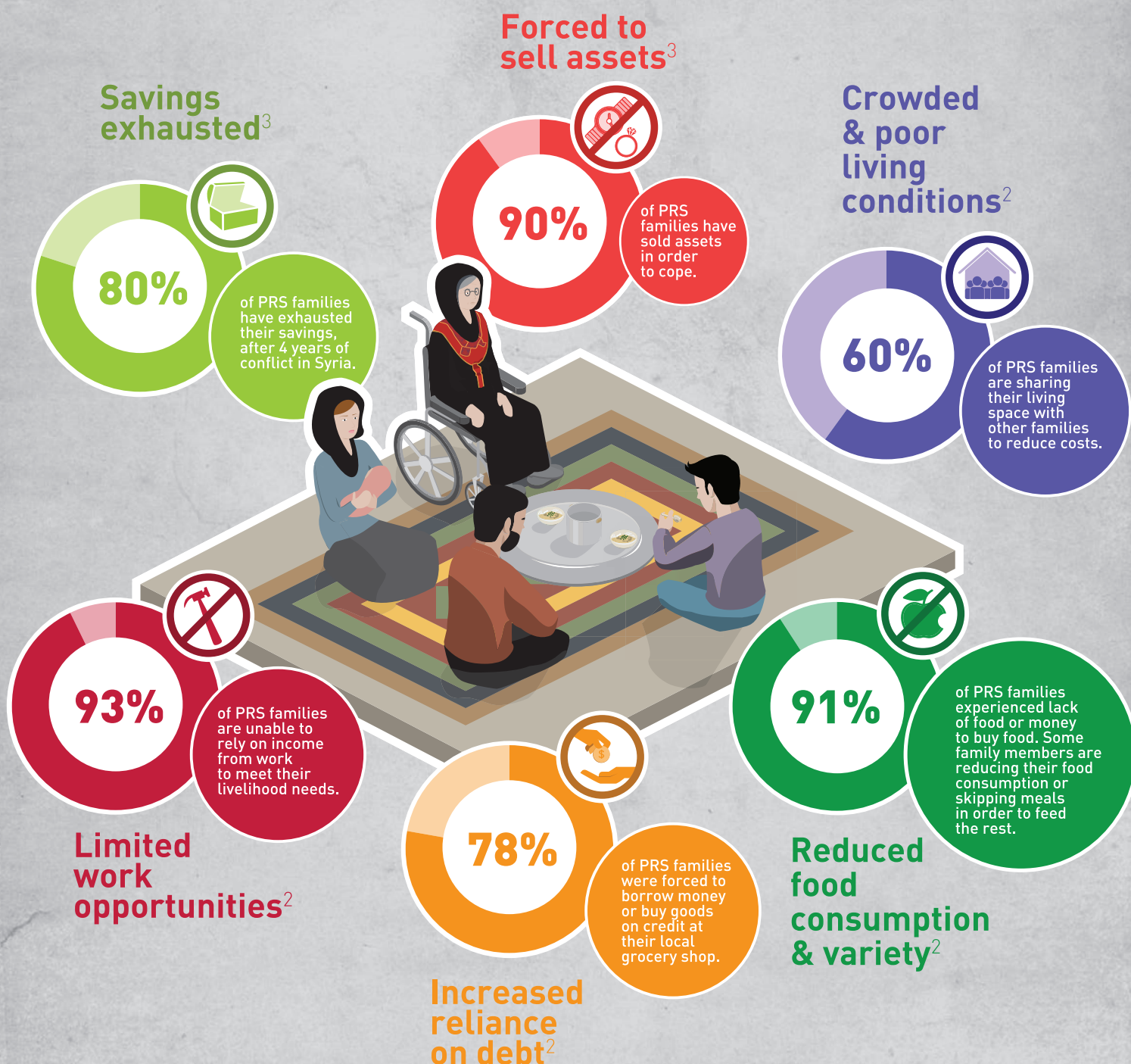
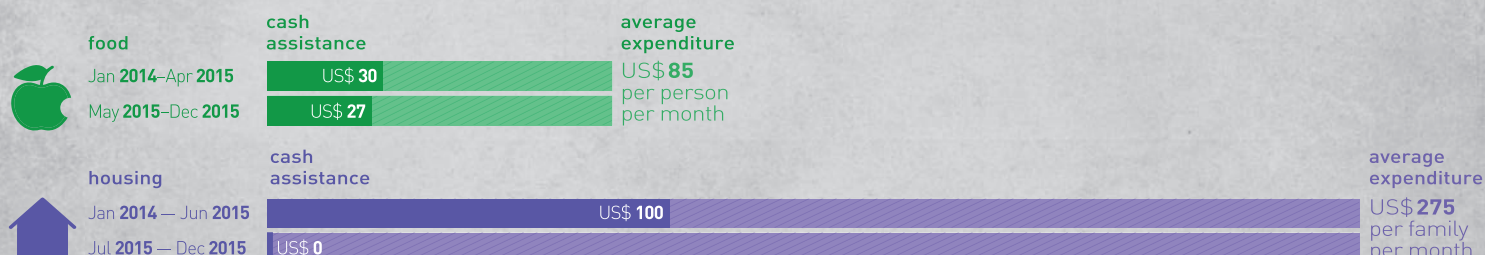


running out of options

As of 4 September 2015, there were 11,538 Palestine refugee families from Syria recorded with UNRWA living in Lebanon¹. **98% relied on UNRWA cash assistance as their main source of income**². In April 2015, UNRWA had to adjust the cash for food to US\$ 27 per person in line with the Regional Food Basket, and the cash for housing (US\$ 100 per family) was suspended in July 2015 due to the Agency's financial crisis.



¹ UNRWA, Population data as at 4 September 2015.

² UNRWA, Palestine Refugee from Syria Vulnerability Assessment undertaken in August 2014.

³ UNRWA, Post Distribution Monitoring Surveys from April 2014 to April 2015.