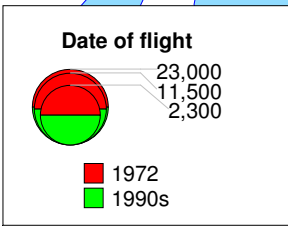
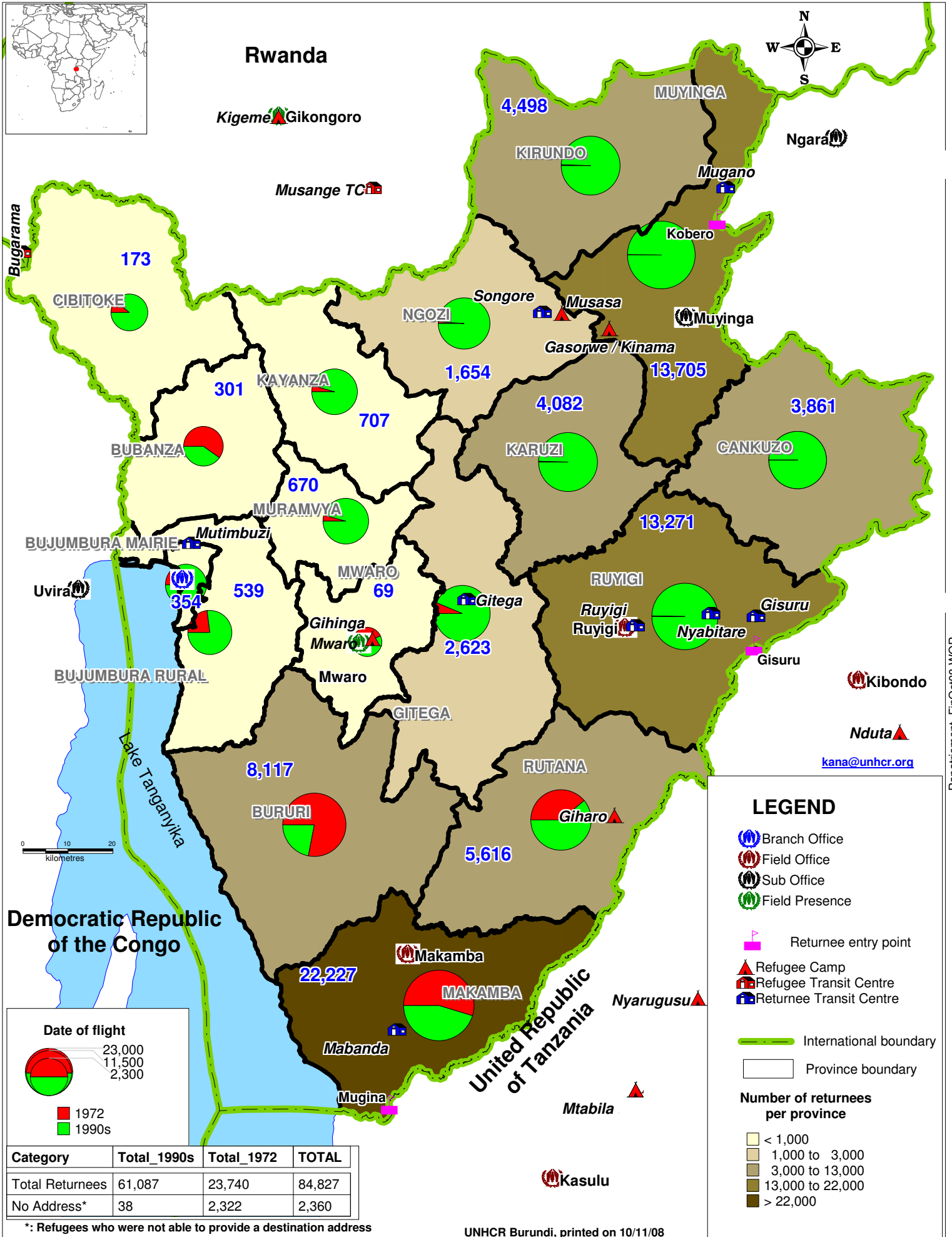


As of 31 October 2008



Category	Total_1990s	Total_1972	TOTAL
Total Returnees	61,087	23,740	84,827
No Address*	38	2,322	2,360

\*: Refugees who were not able to provide a destination address

**LEGEND**

- Branch Office
- Field Office
- Sub Office
- Field Presence
- Returnee entry point
- Refugee Camp
- Refugee Transit Centre
- Returnee Transit Centre
- International boundary
- Province boundary

**Number of returnees per province**

- < 1,000
- 1,000 to 3,000
- 3,000 to 13,000
- 13,000 to 22,000
- > 22,000

Rapatriement\_FinOct08.WOR