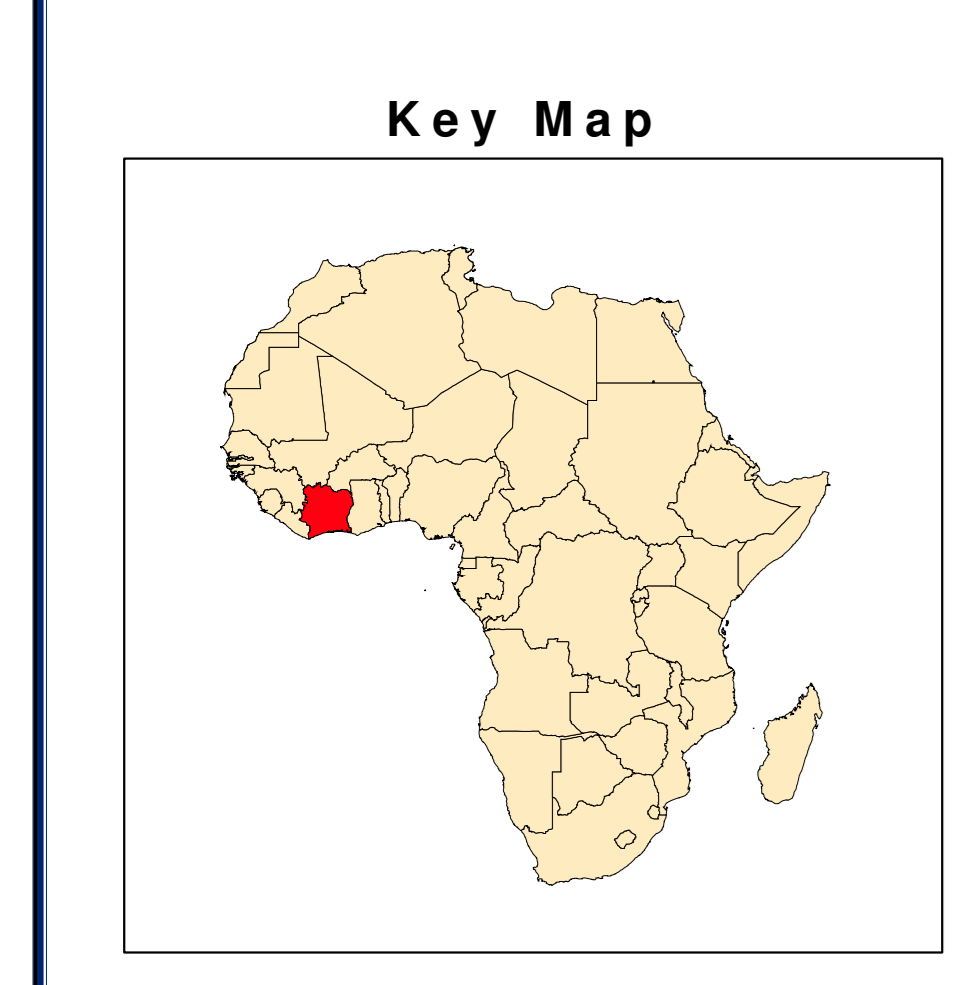
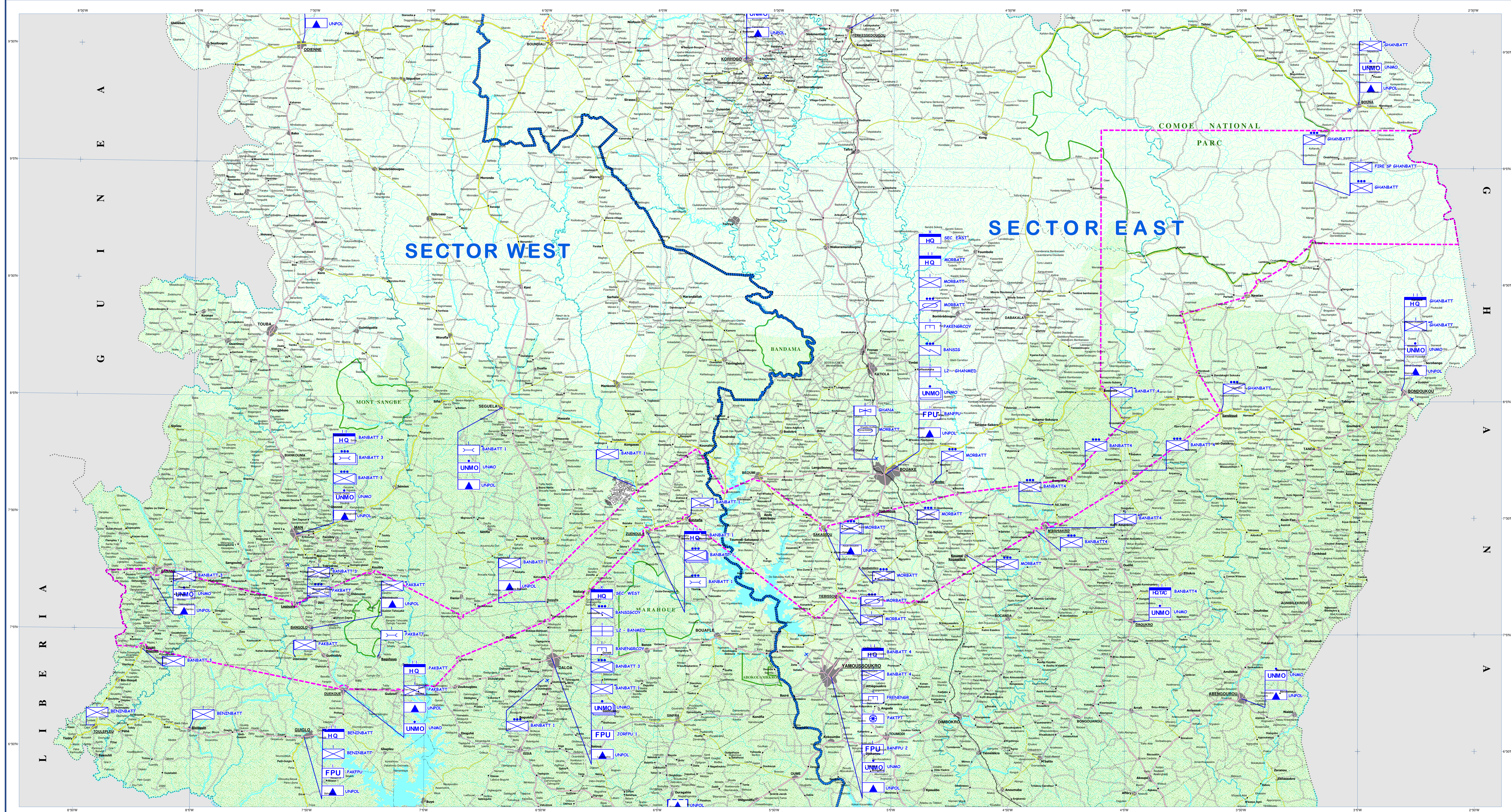


# REPUBLIC OF COTE D'IVOIRE ZONE OF CONFIDENCE



Legend	
Highway	Secondary Road with asphalt
Major road with asphalt	Secondary Road without asphalt
Major road without asphalt	Track
Railroad	Country Boundary
Road under construction	Zone of Confidence
Rivers	Forest
Permanent Watercourse	Pre - Forest
Temporary Watercourse	Savana
Lakes and Sea	National Park
Major Village	Cities
Small Village	

YAMOUSSOUKRO..... Stat Capital  
 SAN PEDRO ..... Region Capital  
 TABOU..... Department Capital  
 Grabo..... Sub-Department Capital

MISSION HQ	ENGINEER COMPANY	FPU FORMED POLICE UNIT	MOTORIZED PROZED SITES COMPANY	SPECIAL POLICE COMPANY
SECTOR HQ	INFANTRY BATTALION	CAVALRY PLATOON	SIGNALS COMPANY	TRANSPORTATION COMPANY
HQ	INFANTRY COMPANY	MECHANICAL INFANTRY COMPANY	SIGNALS PLATOON	UNMO
COMPANY HQ	INFANTRY PLATOON	MECHANICAL INFANTRY PLATOON	SPECIAL FORCE	UNPOL
HQ TAC	AVIATION UNIT	MEDICAL	SGS SPECIAL GENDARMERIE SECTION	UNPOL EXPECTED

Prepared and produced by:

Date: FEBRUARY 2007  
 ENGINEERING SECTION

Project: UNMO/UNPOL Mission  
 Geographic Coordinates System  
 UTM Zone 18  
 Datum: WGS 84

Scale 1:500,000