



# NIGERIA

## REGIONAL REFUGEE RESPONSE PLAN at a glance

January-December 2016

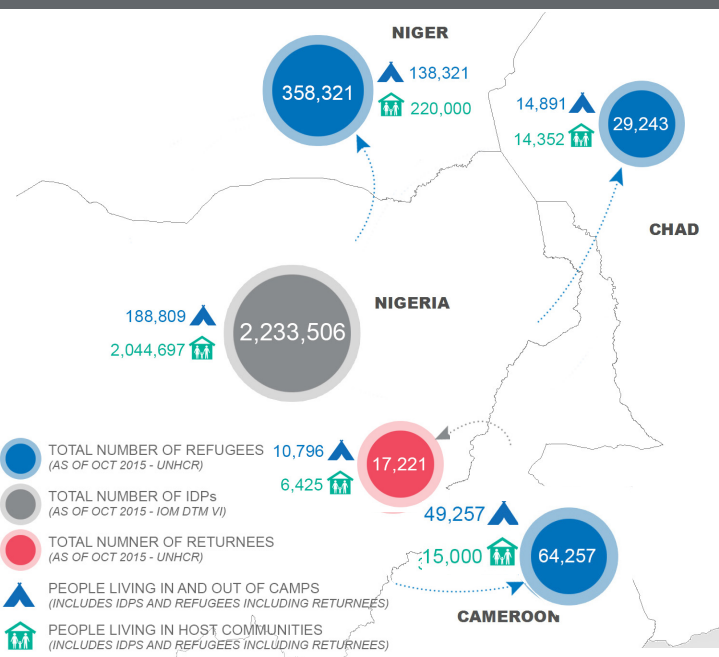


### REGIONAL OVERVIEW

Violence in northern Nigeria and across the Lake Chad Basin has intensified in 2015. Many people fleeing widespread attacks on civilians are seeking safety in neighbouring countries, but the spillover of terror and economic instability is compounding the refugee crisis, and the humanitarian situations in Cameroon, Chad and Niger continue to deteriorate. In 2015, the terrorist group Boko Haram expanded its attacks across the region and has continued to commit indiscriminate attacks against civilians, including numerous suicide bombings, looting and abductions, which have fuelled fear, mistrust and suspicion among the affected populations and led to the harassment and stigmatization of certain groups. They have further led to the scaling-up of military operations in all affected countries and continued tightening of security measures resulting in further forced displacement and a considerable number of Nigerian nationals who were returned to their home country. UNHCR and other humanitarian actors have repeatedly emphasized with Governments that such return operations may even constitute an act of refoulement.

The Lake Chad Region is characterized by a harsh living environment, extreme poverty, weak public services and food insecurity. Intensified insecurity and displacements across the region have disrupted trade, fishing and farming, laying the ground for an economic crisis, and further exacerbating the humanitarian situation

The Nigeria 2016 RRRP aims to provide protection and humanitarian assistance to 230,000 Nigerian refugees in Cameroon, Chad and Niger, including Niger nationals who returned to Niger, as well as to more than 284,000 IDPs and members of impacted host communities in these countries. It promotes the transition from



emergency assistance to more durable solutions by supporting respective national development plans.

The RRRP is a coordinated effort by 24 organizations - UN agencies and non-governmental organizations (NGOs) - and also serves as a joint platform for advocacy and fundraising for all actors involved.

### REGIONAL SECTOR STRATEGY



#### PROTECTION SECTOR

**Ensure protection, including access to asylum.** Maintain civil registration, provide documentation, continue protection monitoring in border areas. Increase access to asylum, including by advocacy with national security forces for the respect of the non-refoulement principle. Promote the civilian and humanitarian character of asylum. Strengthen SGBV prevention and response mechanisms. Enhance child protection through improving the identification and monitoring of children at risk, family tracing, reunification and implementing targeted child-protection activities in accordance with the best interest of the child. Assist people with specific needs. Support peaceful coexistence.



#### EDUCATION SECTOR

**Strengthen access to quality education,** through maintenance, improvement or construction of education infrastructure; advocacy and provision of support for recruitment and capacity building of teachers; and the distribution of teaching materials and school kits. Alternative education platforms including distance education will be explored or expanded.



#### FOOD SECURITY SECTOR

**Provide food,** to affected populations, prioritizing the most vulnerable. Cash and voucher assistance will be provided where feasible.



#### HEALTH & NUTRITION SECTOR

**Maintain and improve health and nutrition services** through the provision of drugs and equipment; construction and rehabilitation of respective infrastructures; capacity building for health, sanitation and nutrition staff; and vaccination campaigns. In order to reduce the prevalence of malnutrition and other diseases, awareness-raising activities will be implemented.



#### LIVELIHOODS & ENVIRONMENT SECTOR

**Encourage self-reliance and environment protection.** Strengthen access to livelihood opportunities, including for agriculture, fisheries and entrepreneurial activities, and through the provision of vocational and skills training and promotion of refugee access to micro-financing. Moreover refugees will be progressively integrated into existing developmental programmes and initiatives. Promote the use of energy-efficient practices; conduct trainings and awareness-raising on key environmental issues.



#### SHELTER & NFI SECTOR

**Provide NFIs and shelter** to meet the basic needs of affected populations, prioritizing the most vulnerable and promote the transition to a more sustainable response through the reinforcement of basic services.



#### WATER, SANITATION & HYGIENE SECTOR

**Enhance water, sanitation and hygiene** infrastructure, through constructing boreholes; providing water trucking; constructing and refurbishing latrines; developing waste management strategies as well as strengthening awareness-raising and community participation in sanitation activities.



#### TARGET POPULATION

**230,000** refugees  
**284,352** host community



#### FUNDING REQUIREMENTS

**USD 198,764,278**  
RRRP requirements